

PROPERTY | WITH PURPOSE

R256,938 per month excl. VAT

R229 per m²



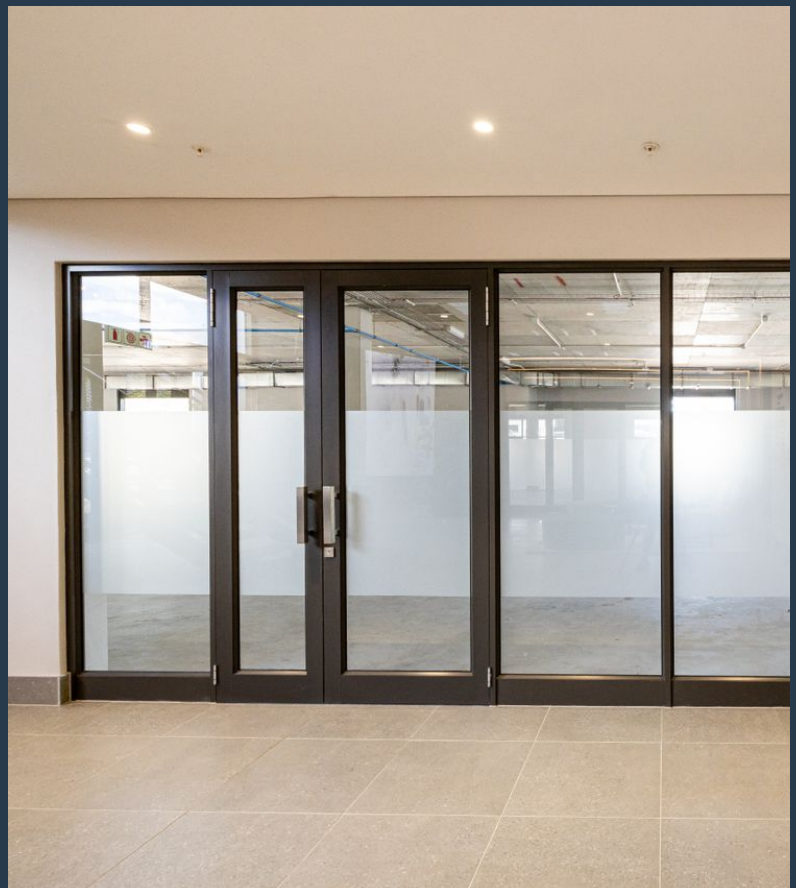
www.spire.co.za

TO LET

TRUMALI HOUSE

12 Trumali Road

Available May 2025: 1,122 m² Office to rent at Trumali Place in Stellenbosch. Ground and 1st floor offices that will include an allowance to fit-out the space. Located in the prestigious business precinct of Stellenbosch, Trumali Place is a new office development offering a range of premium office spaces for businesses looking to establish or expand their presence in one of South Africa's most sought-after commercial regions. Nestled in the same precinct as the renowned Trumali House, this development combines modern architectural design, state-of-the-art facilities, and the tranquil ambiance of Stellenbosch's scenic surroundings, creating the ideal workspace for companies of all sizes. Stellenbosch has long been recognized as a hub of...



WEB REF: SCL2101

Kevin Hellyer | 061 484 5578 | kevinh@spire.co.za

PROPERTY | WITH PURPOSE

R256,938 per month excl. VAT

R229 per m²



www.spire.co.za

1,122 M² OFFICE TO RENT TRUMALI PLACE | STELLENBOSCH



PROPERTY DETAILS

▲ Security	Yes	▲ Floor Size	1122m ²
▲ Air Conditioning	Yes	▲ Land Size	1122
		▲ Zoning	Commercial

WEB REF: SCL2101

Kevin Hellyer | 061 484 5578 | kevinh@spire.co.za

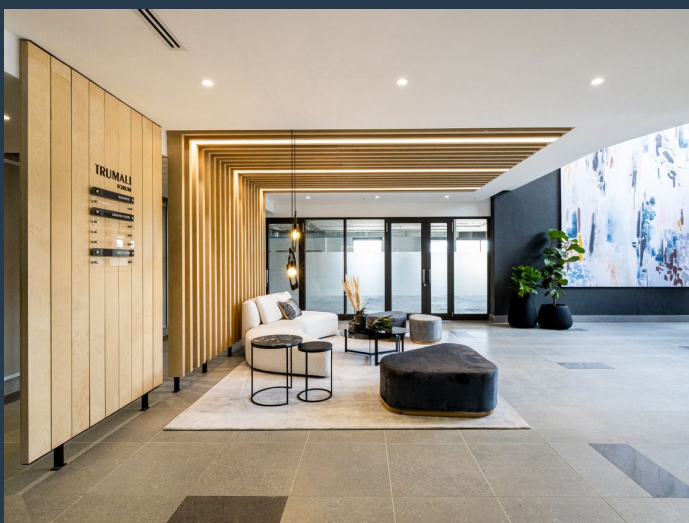
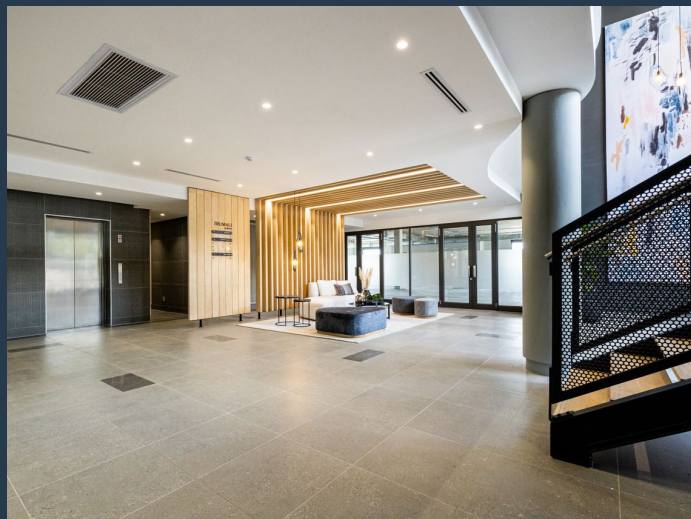
PROPERTY | WITH PURPOSE

R256,938 per month excl. VAT

R229 per m²



www.spire.co.za



CONTACT US



Kevin Hellyer

Candidate Property Practitioner

☎ (021) 6854020

📱 061 484 5578

✉ kevinh@spire.co.za

WEB REF: SCL2101

Kevin Hellyer | 061 484 5578 | kevinh@spire.co.za