

PROPERTY | WITH PURPOSE

**R42,785** per month excl. VAT

R135 per m<sup>2</sup>



[www.spire.co.za](http://www.spire.co.za)

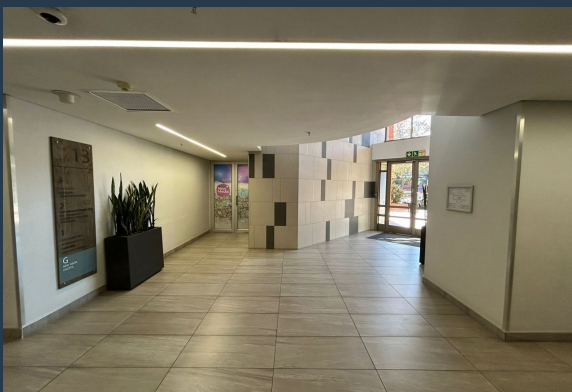
**TO LET**



## THE WOODLANDS

20 Woodlands Drive

317m<sup>2</sup> Office to rent in Woodmead. The Woodlands Office Park has this second floor fully fitted office space that is fitted with 3 offices, open plan area and boardroom. The unit is ready to move in with great natural light and its own kitchenette. The building is equipped with backup power and water supply, secure parking options, and access to an outdoor event area —perfect for hosting corporate functions or team-building activities. This space offers the ideal blend of nature, convenience, and modern business infrastructure. Woodlands Office Park offers a serene working environment within a 43-hectare game park, featuring expansive green spaces, natural water features, and resident wildlife. This unique setting is complemented by...



WEB REF: SCL2455

Brandon Munyanyi | 0746705886 | [brandonm@spire.co.za](mailto:brandonm@spire.co.za)



PROPERTY | WITH PURPOSE

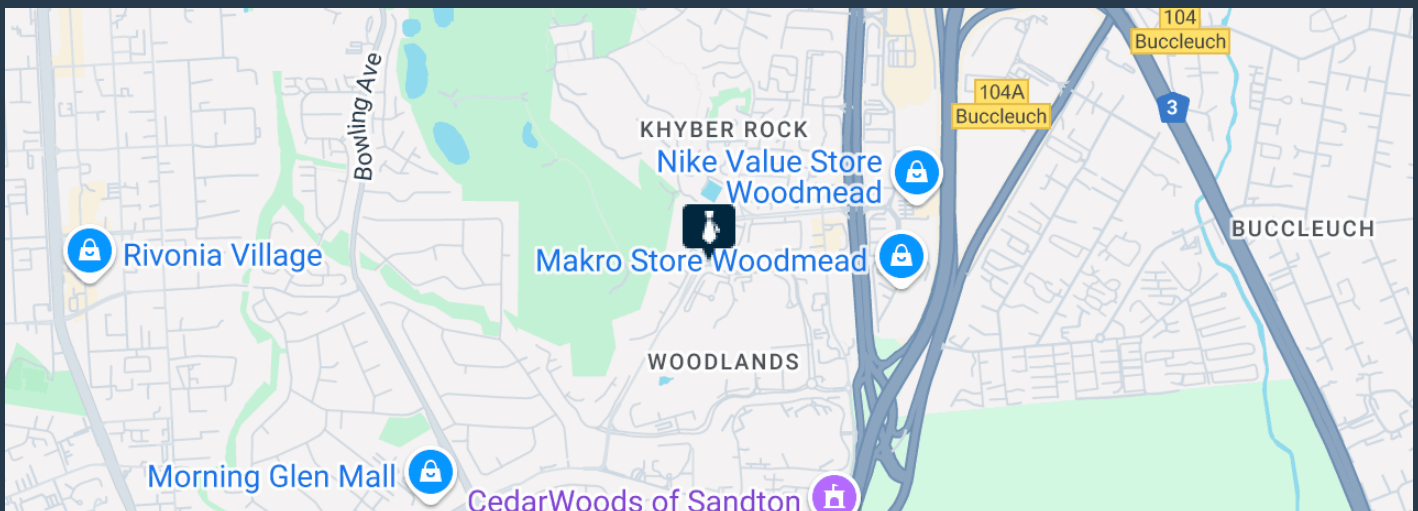
**R42,785** per month excl. VAT

R135 per m<sup>2</sup>



[www.spire.co.za](http://www.spire.co.za)

## 317M2 OFFICE TO RENT IN WOODMEAD - THE WOODLANDS OFFICE PARK



### PROPERTY DETAILS

▲ Security	Yes	▲ Floor Size	317m <sup>2</sup>
▲ Air Conditioning	Yes	▲ Land Size	400
		▲ Zoning	Commercial

WEB REF: SCL2455

Brandon Munyanyi | 0746705886 | [brandonm@spire.co.za](mailto:brandonm@spire.co.za)

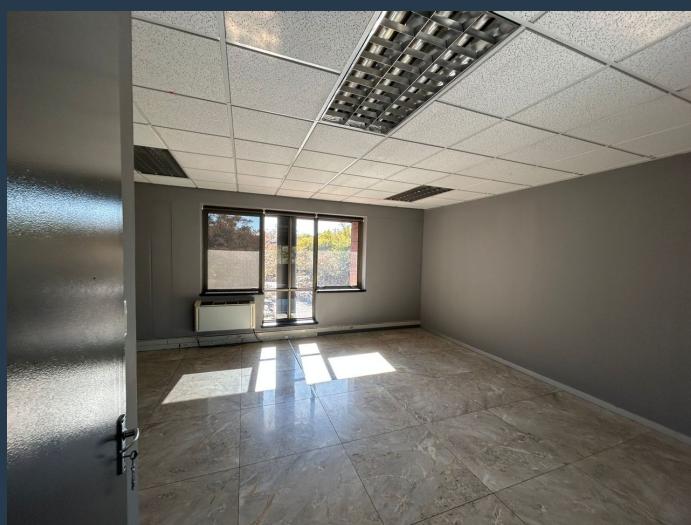
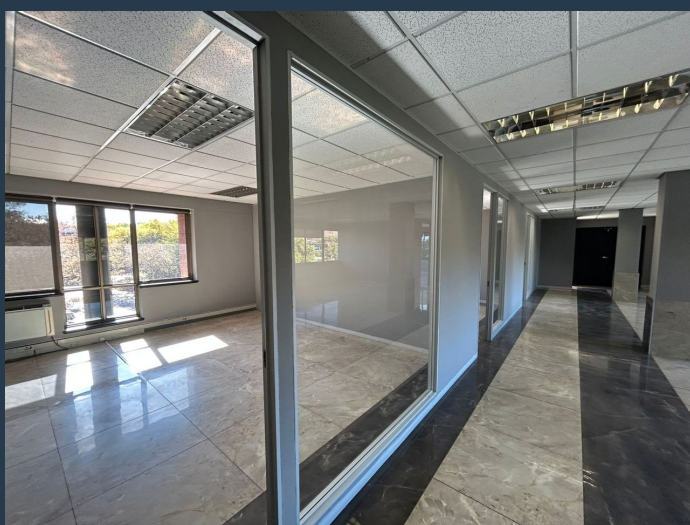
PROPERTY | WITH PURPOSE

**R42,785** per month excl. VAT

**R135** per m<sup>2</sup>



[www.spire.co.za](http://www.spire.co.za)



## CONTACT US



**Brandon Munyanyi**

Agent

☎ (011) 2685871

📱 0746705886

✉ [brandonm@spire.co.za](mailto:brandonm@spire.co.za)

WEB REF: SCL2455

Brandon Munyanyi | 0746705886 | [brandonm@spire.co.za](mailto:brandonm@spire.co.za)