

PROPERTY | WITH PURPOSE

R88,200 per month excl. VAT

R180 per m²

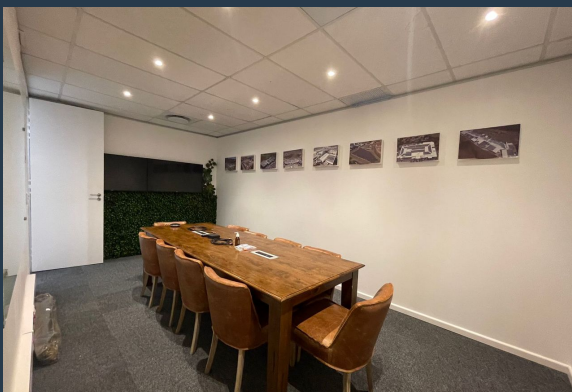
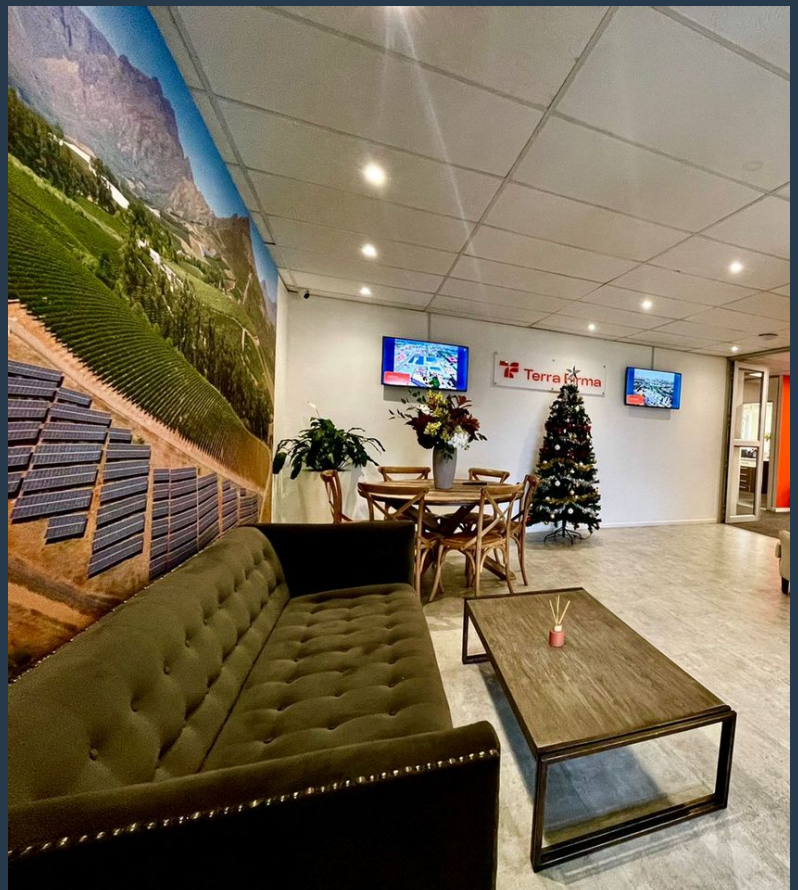


www.spire.co.za

TO LET



490 m² Office Space to Rent in Westlake Discover this spacious 490 m² office space available for immediate rental in the vibrant business hub of Westlake. Designed for efficiency and comfort, the office layout is ready to accommodate a new tenant, featuring a full kitchen and ample parking space for ease and accessibility. This well-maintained office space is ideal for businesses seeking a seamless transition, with a practical setup that supports productivity and collaboration. Renting office space in Westlake provides your business with a prestigious address in a sought-after, secure area, surrounded by stunning mountain views and conveniently located near main transportation routes. Westlake is a thriving commercial area known for its...



WEB REF: SCL2163

Logan Du Pessis | 0736449934 | logand@spire.co.za

PROPERTY | WITH PURPOSE

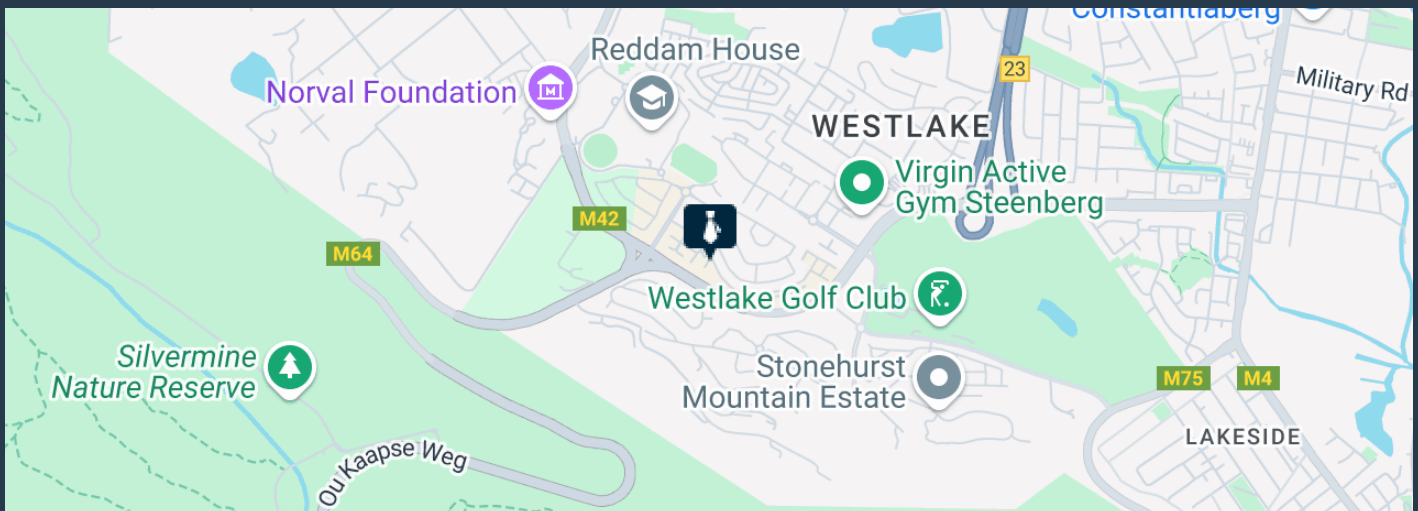
R88,200 per month excl. VAT

R180 per m²



www.spire.co.za

490 M² OFFICE SPACE TO RENT IN WESTLAKE



PROPERTY DETAILS

▲ Floor Size	490m ²
▲ Zoning	Commercial

WEB REF: SCL2163

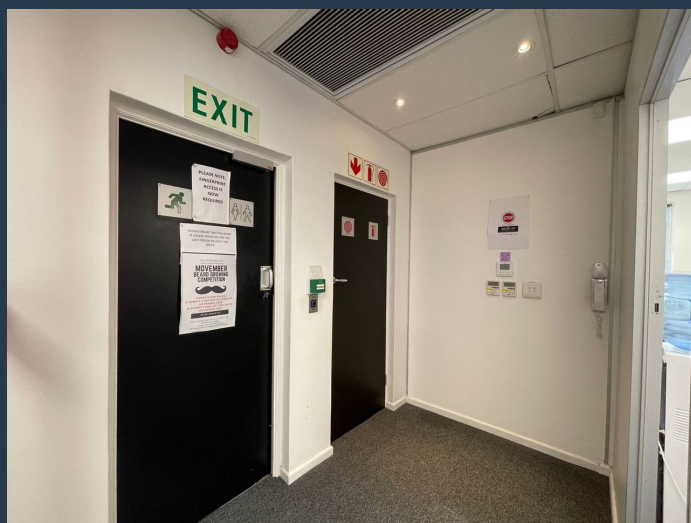
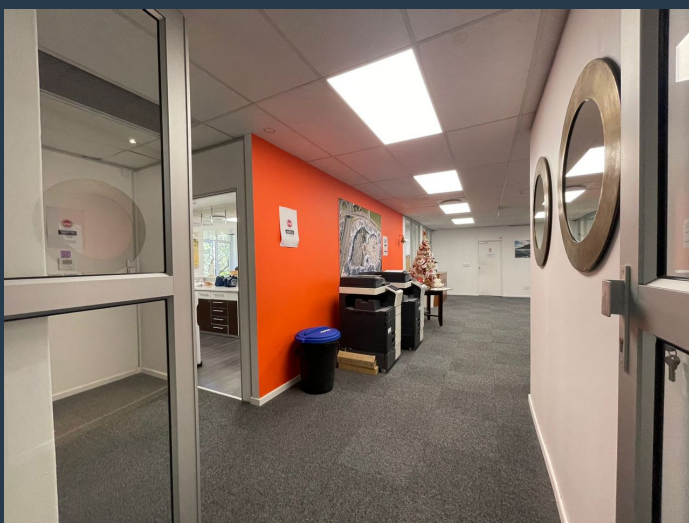
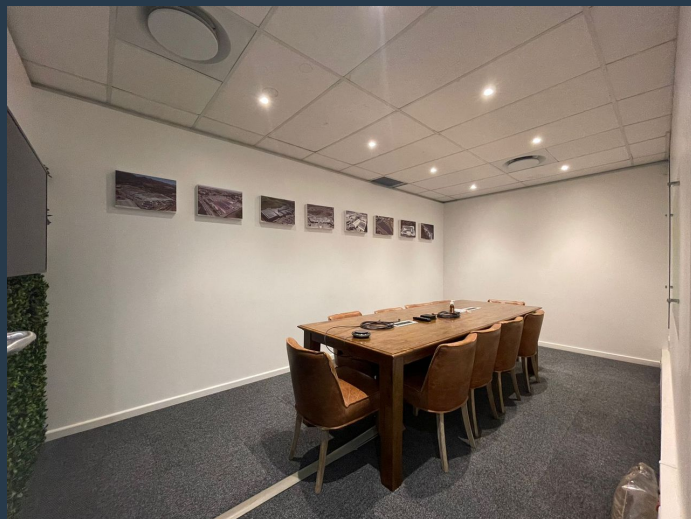
Logan Du Pessis | 0736449934 | logand@spire.co.za

PROPERTY | WITH PURPOSE

R88,200 per month excl. VAT
R180 per m²



www.spire.co.za



CONTACT US



Logan Du Pessis
Agent

📞 (021) 6854020
📱 0736449934
✉ logand@spire.co.za



Kevin Hellyer
Candidate Property Practitioner

📞 (021) 6854020
📱 061 484 5578
✉ kevinh@spire.co.za

WEB REF: SCL2163

Logan Du Pessis | 0736449934 | logand@spire.co.za