

PROPERTY | WITH PURPOSE

R198,900 per month excl. VAT

R170 per m²

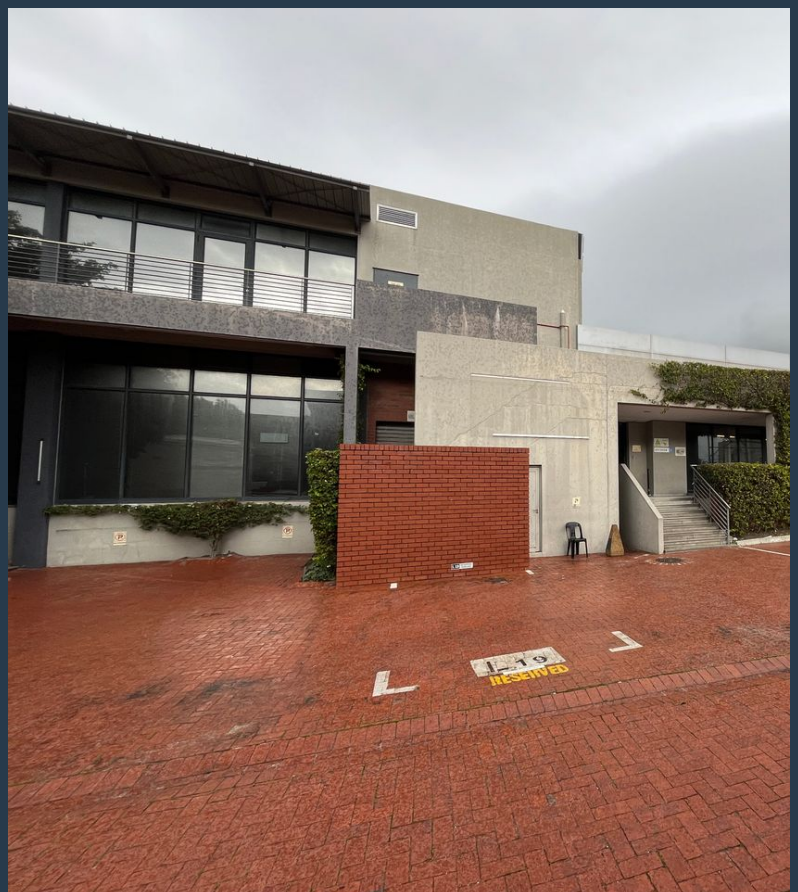


www.spire.co.za

TO LET



1170m² office to let in North Park, Black River Park. This expansive space offers a versatile, white-boxed area, perfect for various business operations. The unit features two roller shutter doors and multiple access points, ensuring efficient logistics and personnel movement. The first-floor space is well-lit through numerous windows, creating a bright and welcoming workspace. With kitchens and toilets conveniently located on this floor, the building provides essential amenities to support a comfortable and efficient working environment. An added highlight of this unit is the 178m² balcony, offering stunning views and a perfect space for breaks or informal meetings. Located within the prestigious Black River Park, this first-floor space...



WEB REF: SCL2006

Kevin Hellyer | 061 484 5578 | kevinh@spire.co.za

PROPERTY | WITH PURPOSE

R198,900 per month excl. VAT

R170 per m²



www.spire.co.za

COMMERCIAL SPACE TO LET IN BLACK RIVER PARK OBSERVATORY



PROPERTY DETAILS

▲ Floor Size	1170m ²
▲ Zoning	Commercial

WEB REF: SCL2006

Kevin Hellyer | 061 484 5578 | kevinh@spire.co.za

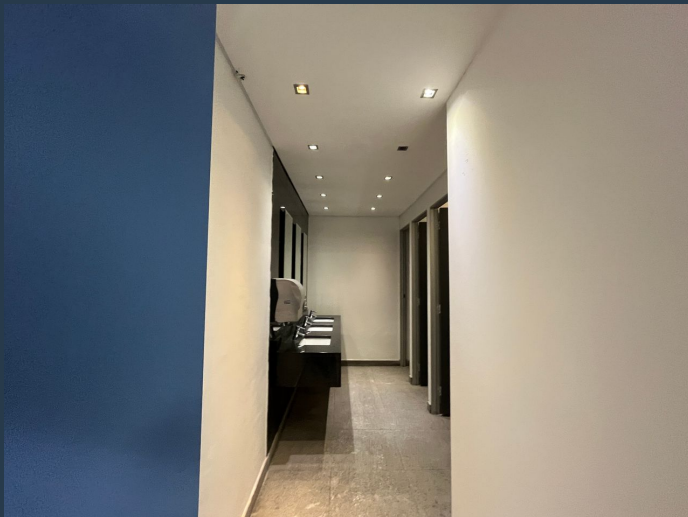
PROPERTY | WITH PURPOSE

R198,900 per month excl. VAT

R170 per m²



www.spire.co.za



CONTACT US



Kevin Hellyer

Candidate Property Practitioner

☎ (021) 6854020

📱 061 484 5578

✉ kevinh@spire.co.za

WEB REF: SCL2006

Kevin Hellyer | 061 484 5578 | kevinh@spire.co.za