

PROPERTY | WITH PURPOSE

**R35,490** per month excl. VAT

R90 per m<sup>2</sup>

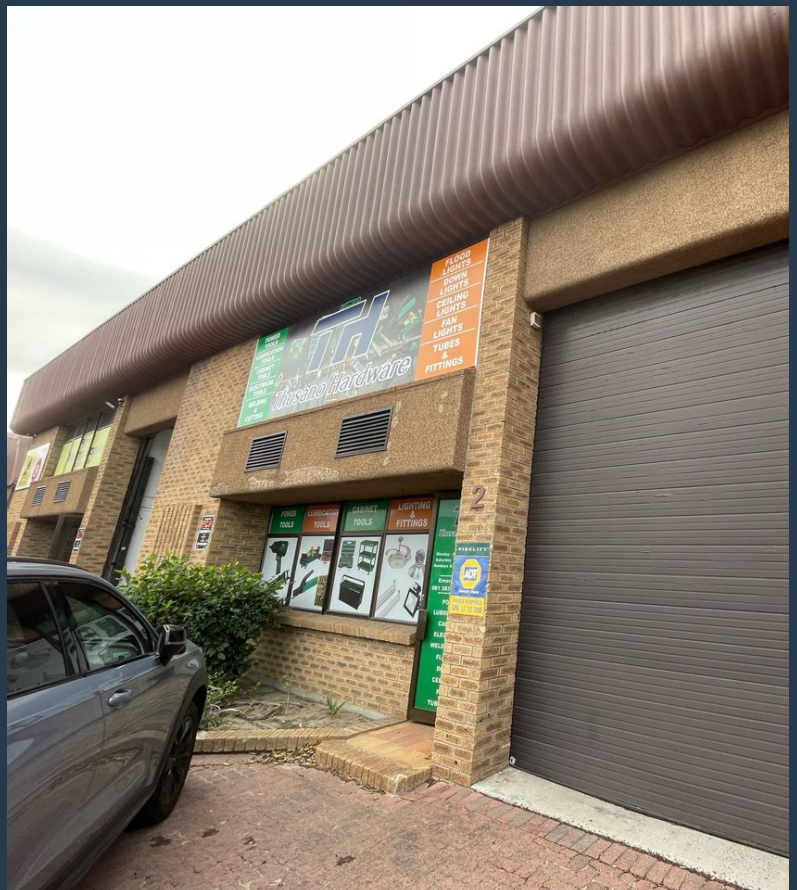


[www.spire.co.za](http://www.spire.co.za)

**TO LET**



This 390m<sup>2</sup> warehouse in Montague Gardens is available for immediate occupation. The unit is fully fitted, offering a straightforward and functional layout suitable for storage, distribution, or light manufacturing operations. It includes a large roller shutter door for direct vehicle access and efficient goods handling. The warehouse also provides a kitchen area and private ablutions for staff, along with multiple on-site parking bays allocated to the unit. The space offers sufficient height for racking and open floor area for flexible equipment placement or work processes. The unit is secure and forms part of a well-managed industrial complex, supporting tenants who need reliable operations and consistent access. Montague Gardens remains...



WEB REF: SCL2326

Logan Du Pessis | 0736449934 | [logand@spire.co.za](mailto:logand@spire.co.za)



PROPERTY | WITH PURPOSE

**R35,490** per month excl. VAT

R90 per m<sup>2</sup>



[www.spire.co.za](http://www.spire.co.za)

## 390M<sup>2</sup> WAREHOUSE FOR RENT IN MONTAGUE GARDENS - JIGMAN PARK



### PROPERTY DETAILS

▲ Floor Size	390m <sup>2</sup>
▲ Zoning	Industrial

WEB REF: SCL2326

Logan Du Pessis | 0736449934 | [logand@spire.co.za](mailto:logand@spire.co.za)



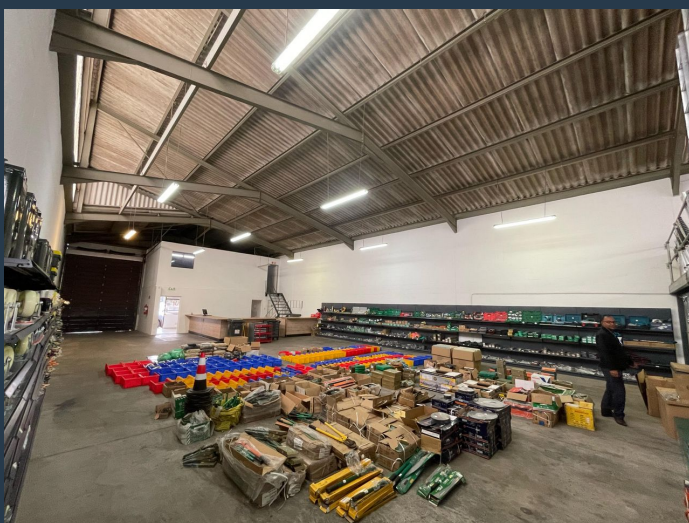
PROPERTY | WITH PURPOSE

**R35,490** per month excl. VAT

R90 per m<sup>2</sup>



[www.spire.co.za](http://www.spire.co.za)



## CONTACT US



**Logan Du Pessis**  
Agent

☎ (021) 6854020

📱 0736449934

✉ [logand@spire.co.za](mailto:logand@spire.co.za)



**Kevin Hellyer**  
Candidate Property Practitioner

☎ (021) 6854020

📱 061 484 5578

✉ [kevinh@spire.co.za](mailto:kevinh@spire.co.za)

WEB REF: SCL2326

Logan Du Pessis | 0736449934 | [logand@spire.co.za](mailto:logand@spire.co.za)