

PROPERTY | WITH PURPOSE

**R13,000** per month excl. VAT

R85 per m<sup>2</sup>

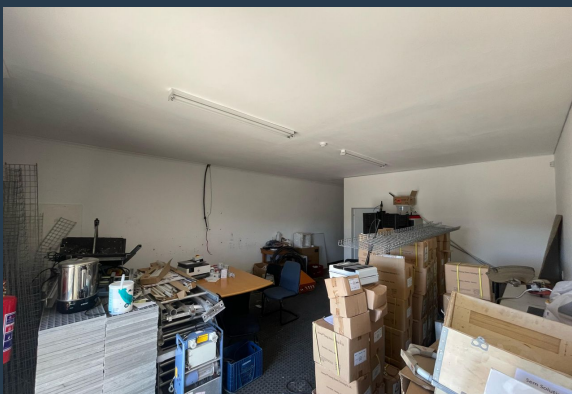


[www.spire.co.za](http://www.spire.co.za)

**TO LET**



153 m<sup>2</sup> Warehouse for Rent in Milnerton. This versatile 153 m<sup>2</sup> warehouse in Milnerton is fully fitted and move-in ready, offering the perfect space for businesses seeking a functional and efficient environment. The warehouse features full kitchen facilities, ample parking for tenants, and large roller shutter doors that ensure easy loading and unloading. Located in a well-established industrial area, this property provides excellent access to major transport routes, making it ideal for storage, distribution, or light manufacturing. Milnerton is a prime industrial location, known for its strategic positioning near Cape Town's CBD and the Port of Cape Town. The area offers businesses easy connectivity to the N1, N7, and other major routes,...



WEB REF: SCL2277

Logan Du Pessis | 0736449934 | [logand@spire.co.za](mailto:logand@spire.co.za)



PROPERTY | WITH PURPOSE

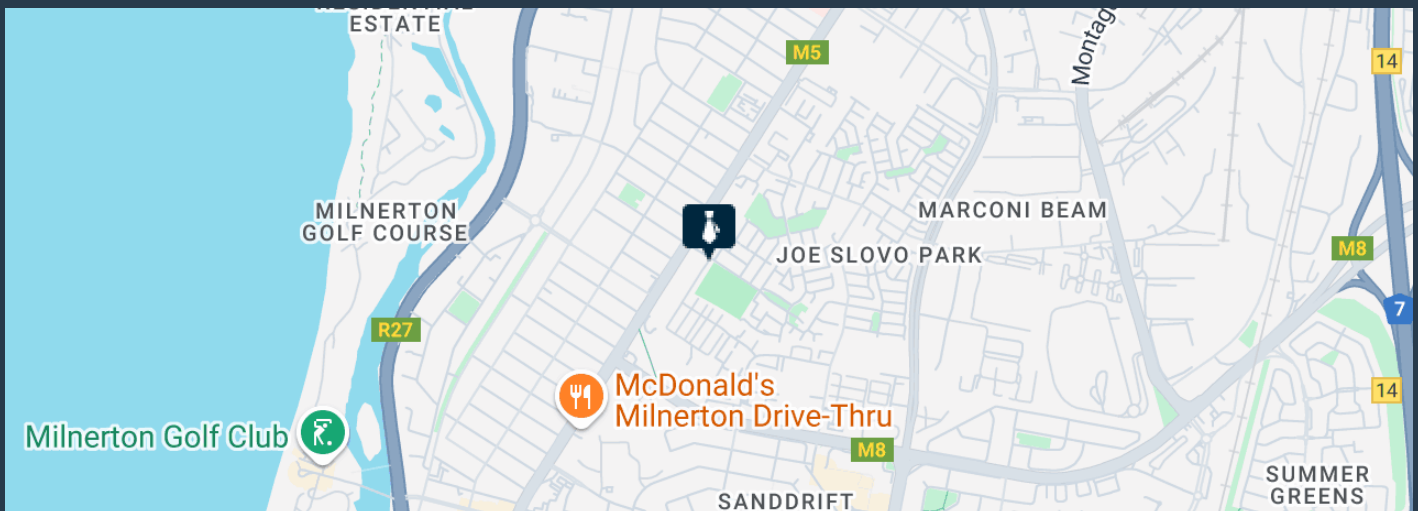
**R13,000** per month excl. VAT

R85 per m<sup>2</sup>



[www.spire.co.za](http://www.spire.co.za)

## 153M<sup>2</sup> WAREHOUSE FOR RENT IN MILNERTON



### PROPERTY DETAILS

▲ Floor Size	153m <sup>2</sup>
▲ Land Size	153
▲ Zoning	Industrial

WEB REF: SCL2277

Logan Du Pessis | 0736449934 | [logand@spire.co.za](mailto:logand@spire.co.za)

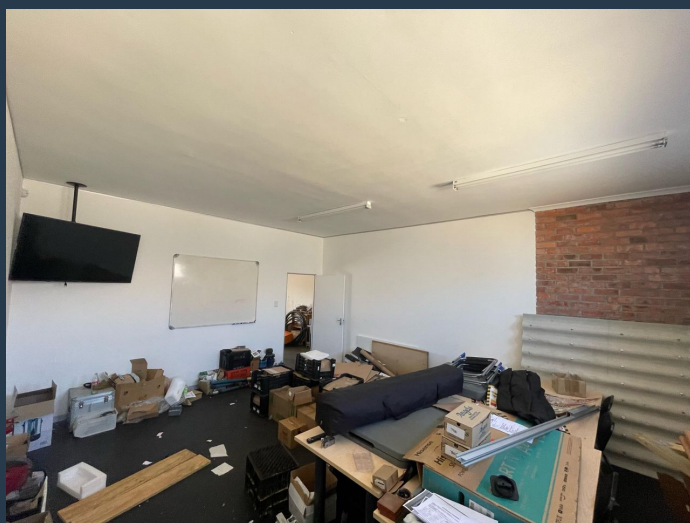
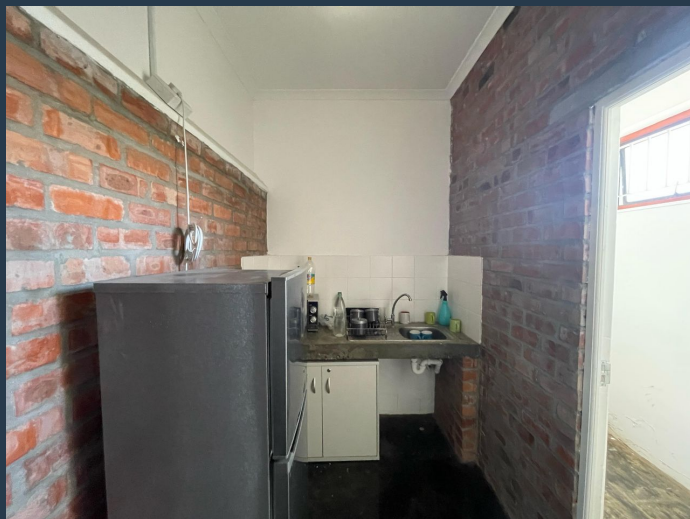
PROPERTY | WITH PURPOSE

**R13,000** per month excl. VAT

R85 per m<sup>2</sup>



[www.spire.co.za](http://www.spire.co.za)



## CONTACT US



**Logan Du Pessis**  
Agent

☎ (021) 6854020  
📱 0736449934  
✉ [logand@spire.co.za](mailto:logand@spire.co.za)



**Kevin Hellyer**  
Candidate Property Practitioner

☎ (021) 6854020  
📱 061 484 5578  
✉ [kevinh@spire.co.za](mailto:kevinh@spire.co.za)

WEB REF: SCL2277

Logan Du Pessis | 0736449934 | [logand@spire.co.za](mailto:logand@spire.co.za)