

PROPERTY | WITH PURPOSE

R23,850 per month excl. VAT

R75 per m²

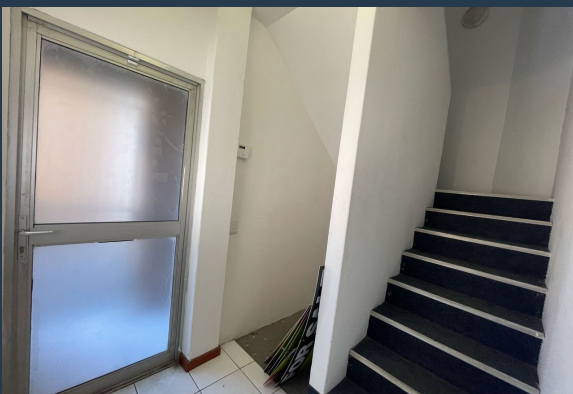


www.spire.co.za

TO LET



318 m² Warehouse Space for Rent in Ringer Park
This spacious 318 m² warehouse in Ringer Park is available for immediate occupancy, offering an ideal space for businesses seeking a well-equipped and convenient location. The unit features a full kitchen, making it easy for staff to enjoy meals on-site, and ample parking for tenants and visitors. Designed for efficiency, the warehouse has excellent accessibility, allowing for seamless logistics and daily operations. With secure premises and a strategic location, this space is perfect for storage, light manufacturing, or distribution needs. Why Rent Office Space in Ringer Park? Ringer Park is a sought-after commercial hub, known for its accessibility, secure environment, and proximity to...



WEB REF: SCL2231

Logan Du Pessis | 0736449934 | logand@spire.co.za

PROPERTY | WITH PURPOSE

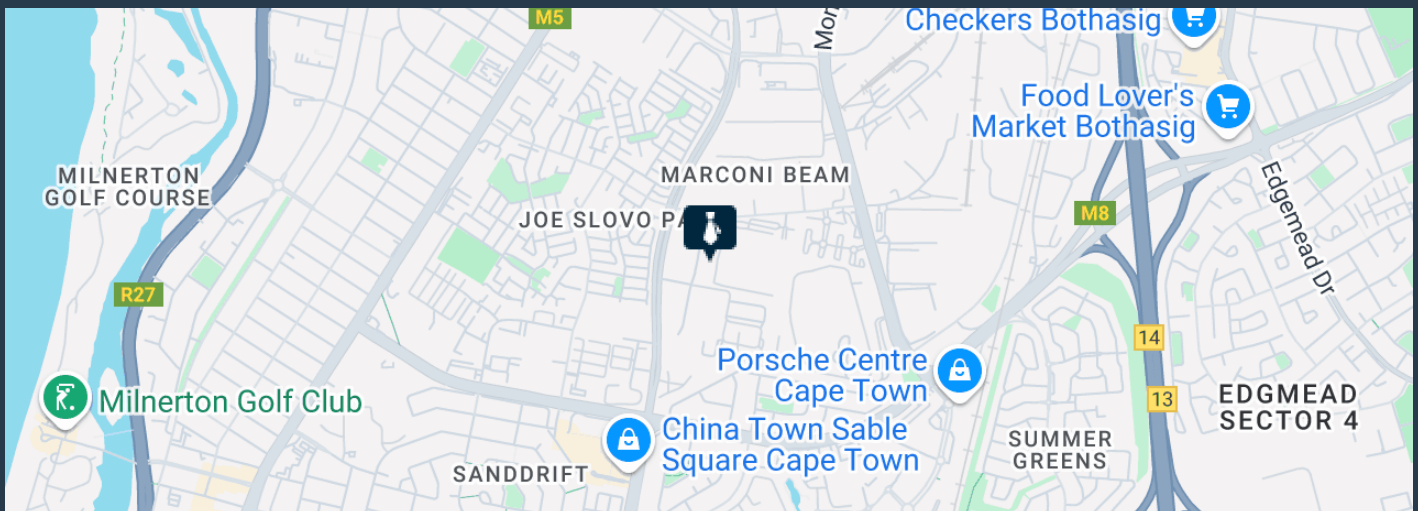
R23,850 per month excl. VAT

R75 per m²



www.spire.co.za

318 M² WAREHOUSE SPACE FOR RENT IN RINGER PARK



PROPERTY DETAILS

▲ Floor Size	318m ²
▲ Zoning	Industrial

WEB REF: SCL2231

Logan Du Pessis | 0736449934 | logand@spire.co.za

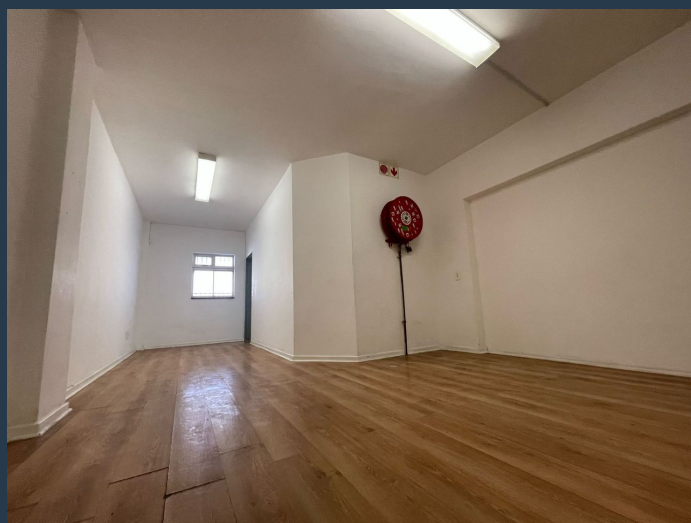
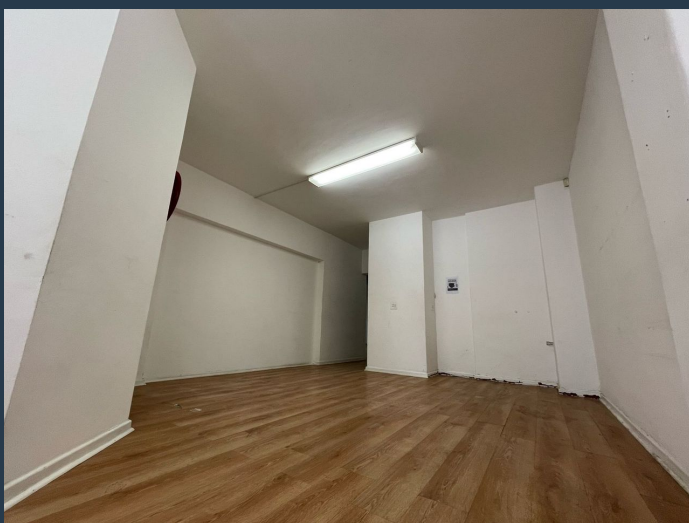
PROPERTY | WITH PURPOSE

R23,850 per month excl. VAT

R75 per m²



www.spire.co.za



CONTACT US



Logan Du Pessis
Agent

☎ (021) 6854020

📱 0736449934

✉ logand@spire.co.za



Kevin Hellyer
Candidate Property Practitioner

☎ (021) 6854020

📱 061 484 5578

✉ kevinh@spire.co.za

WEB REF: SCL2231

Logan Du Pessis | 0736449934 | logand@spire.co.za