

PROPERTY | WITH PURPOSE

**R14,000** per month excl. VAT

R35 per m<sup>2</sup>

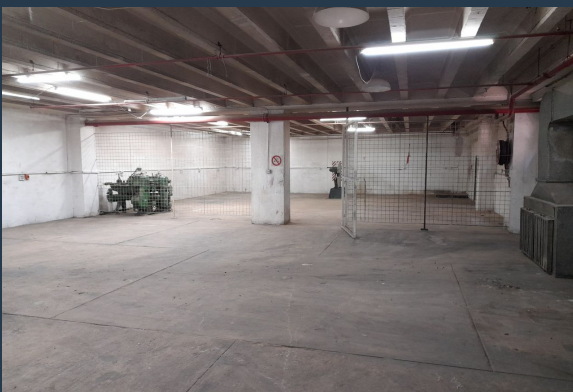
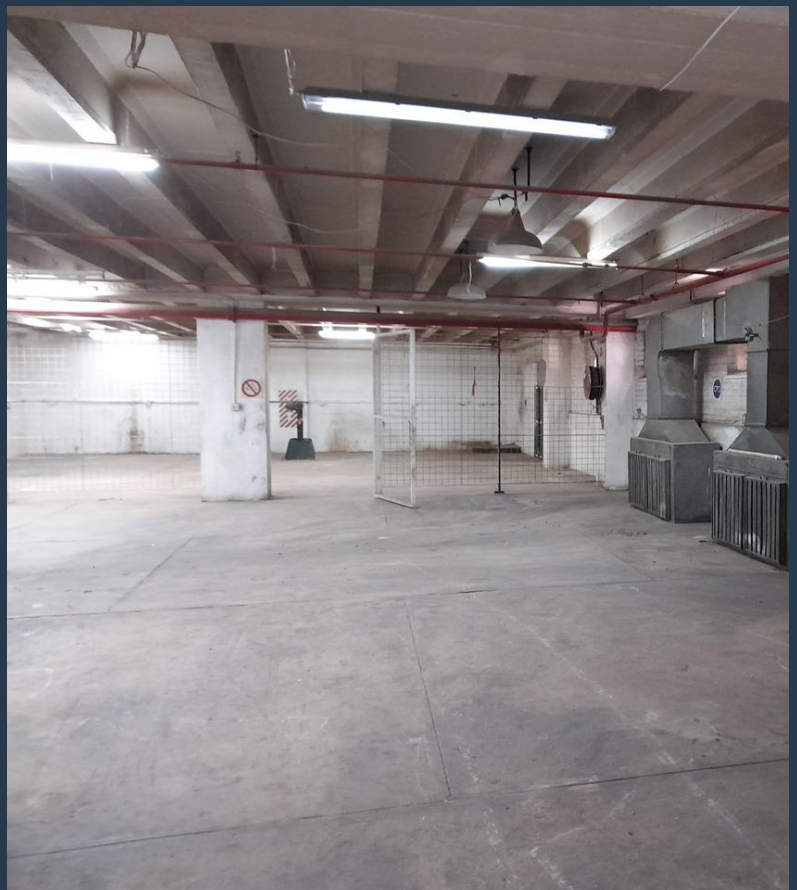


[www.spire.co.za](http://www.spire.co.za)

**TO LET**



400m2 warehouse to rent in Selby, the warehouse offers of an open plan warehouse with a office. The property has natural light, good height to eaves. There is 3 phase power and secure covered parking. The unit is in a stand alone building. The unit is well located in Selby with direct access to the M1 going north and south of Johannesburg and also the M2 leading east and west of Johannesburg. Close to taxi ranks, bus, and taxi routes. We have been helping businesses just like yours to find their perfect industrial spaces. Our team of property professionals are ready to find your perfect space in the Johannesburg. We have a longstanding relationship with the top property funds and property management companies in the city. We feature...



WEB REF: SCL122

Nadeema Chothia | 083 305 5354 | [nadeemac@spire.co.za](mailto:nadeemac@spire.co.za)

PROPERTY | WITH PURPOSE

**R14,000** per month excl. VAT

R35 per m<sup>2</sup>



[www.spire.co.za](http://www.spire.co.za)

## WAREHOUSE TO RENT IN SELBY, JOHANNESBURG



### PROPERTY DETAILS

▲ Floor Size	400m <sup>2</sup>
▲ Land Size	8000
▲ Zoning	Industrial

WEB REF: SCL122

Nadeema Chothia | 083 305 5354 | [nadeemac@spire.co.za](mailto:nadeemac@spire.co.za)



PROPERTY | WITH PURPOSE

**R14,000** per month excl. VAT

R35 per m<sup>2</sup>



[www.spire.co.za](http://www.spire.co.za)



## CONTACT US



**Nadeema Chothia**

Agent

☎ (011) 2685871

📱 083 305 5354

✉ [nadeemac@spire.co.za](mailto:nadeemac@spire.co.za)

WEB REF: SCL122

Nadeema Chothia | 083 305 5354 | [nadeemac@spire.co.za](mailto:nadeemac@spire.co.za)