

PROPERTY | WITH PURPOSE

R10,045 per month excl. VAT

R35 per m²

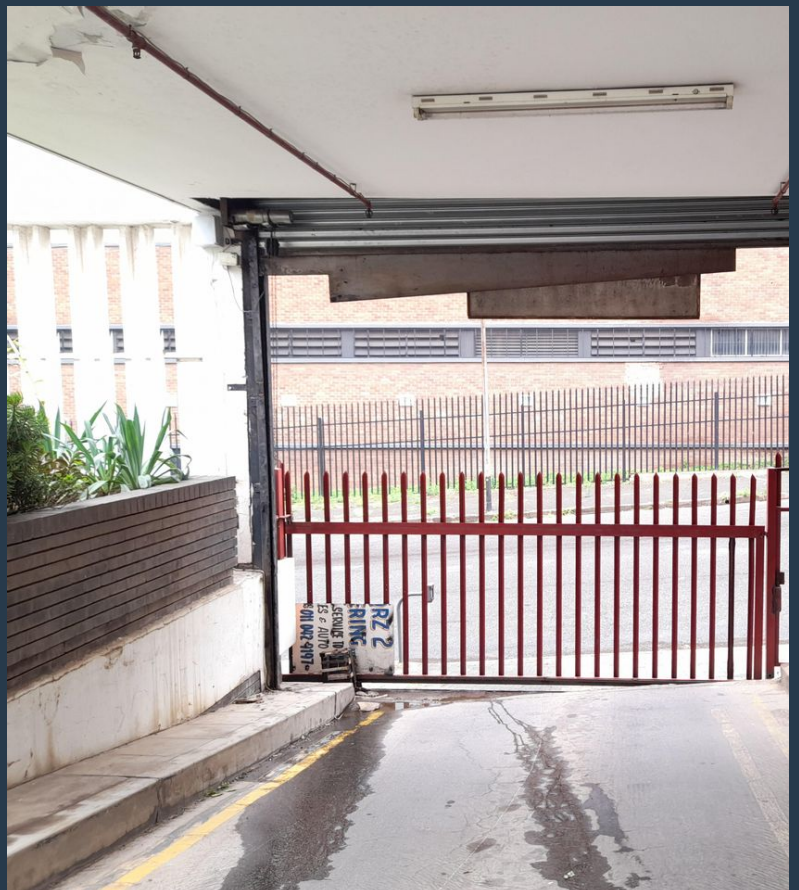
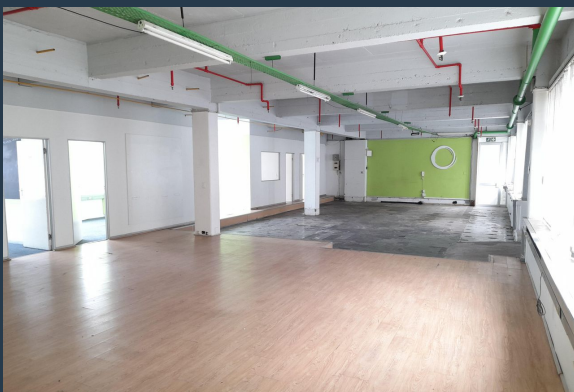


www.spire.co.za

TO LET



287m2 warehouse to rent in Selby, Park Central, the warehouse offers of an open plan warehouse, an office component, large door with direct access to the unit and ablutions. This has ample natural light on the property flowing into the warehouse. The roof is approximately 4m to eaves. There is secure parking on sight for the staff. The unit is well located in Selby with direct access to the M1 going north and south of Johannesburg and also the M2 leading east and west of Johannesburg. We have been helping businesses just like yours to find their perfect industrial spaces. Our team of property professionals are ready to find your perfect space in the Johannesburg. We have a longstanding relationship with the top property funds and...



WEB REF: CL4124

Nadeema Chothia | 083 305 5354 | nadeemac@spire.co.za

PROPERTY | WITH PURPOSE

R10,045 per month excl. VAT

R35 per m²



www.spire.co.za

WAREHOUSE TO RENT IN SELBY, JOHANNESBURG



PROPERTY DETAILS

▲ Floor Size	287m ²
▲ Land Size	15000
▲ Zoning	Industrial

WEB REF: CL4124

Nadeema Chothia | 083 305 5354 | nadeemac@spire.co.za

PROPERTY | WITH PURPOSE

R10,045 per month excl. VAT

R35 per m²



www.spire.co.za



CONTACT US



Nadeema Chothia

Agent

☎ (011) 2685871

📱 083 305 5354

✉ nadeemac@spire.co.za

WEB REF: CL4124

Nadeema Chothia | 083 305 5354 | nadeemac@spire.co.za