

PROPERTY | WITH PURPOSE

**R18,000** per month excl. VAT

R30 per m<sup>2</sup>

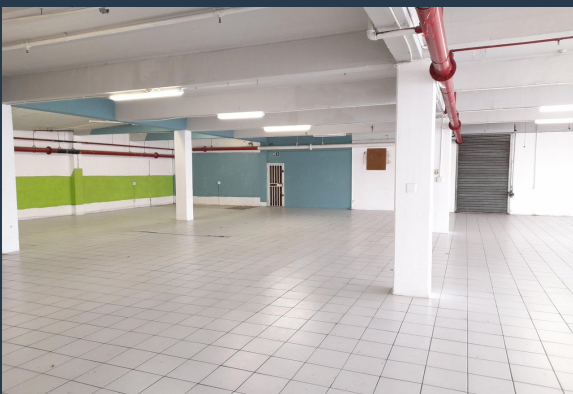
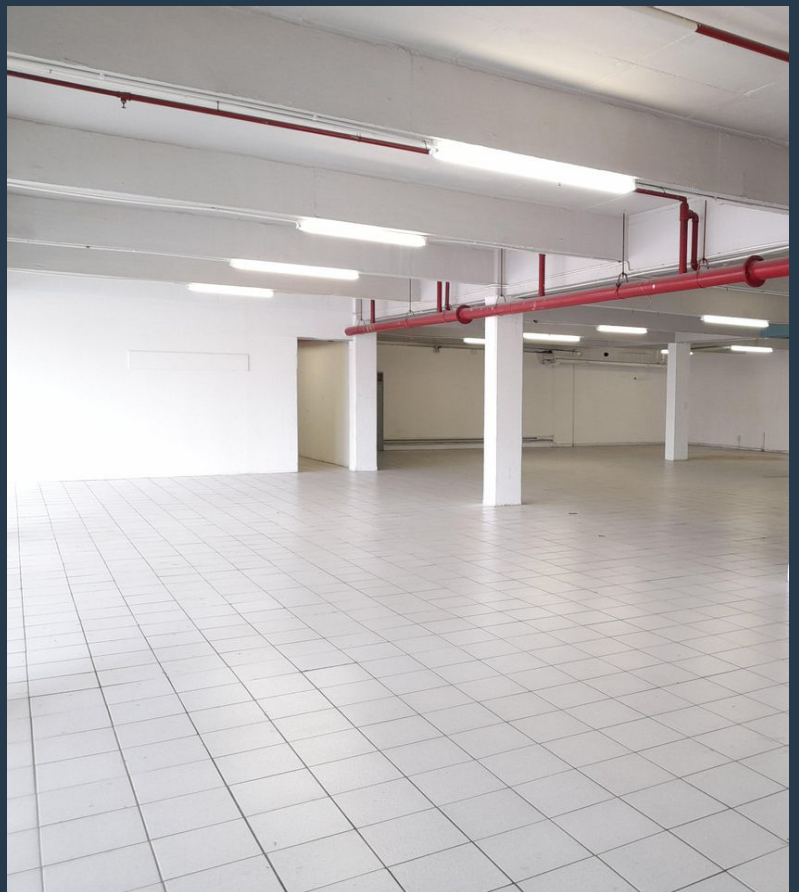


[www.spire.co.za](http://www.spire.co.za)

**TO LET**



600m2 warehouse to rent in Selby, Park Central, the warehouse offers of an open plan warehouse, an office component, outside holding storage and ablutions. This property is tiled throughout with ample natural light on the property flowing into the warehouse. The roof is approximately 4m to eaves. There is secure parking on sight for the staff. The unit is well located in Selby with direct access to the M1 going north and south of Johannesburg and also the M2 leading east and west of Johannesburg. We have been helping businesses just like yours to find their perfect industrial spaces. Our team of property professionals are ready to find your perfect space in the Johannesburg. We have a longstanding relationship with the top property...



WEB REF: CL4123

Nadeema Chothia | 083 305 5354 | [nadeemac@spire.co.za](mailto:nadeemac@spire.co.za)

PROPERTY | WITH PURPOSE

**R18,000** per month excl. VAT

R30 per m<sup>2</sup>



[www.spire.co.za](http://www.spire.co.za)

## WAREHOUSE TO RENT IN SELBY, JOHANNESBURG



### PROPERTY DETAILS

▲ Floor Size	600m <sup>2</sup>
▲ Land Size	15000
▲ Zoning	Industrial

WEB REF: CL4123

Nadeema Chothia | 083 305 5354 | [nadeemac@spire.co.za](mailto:nadeemac@spire.co.za)



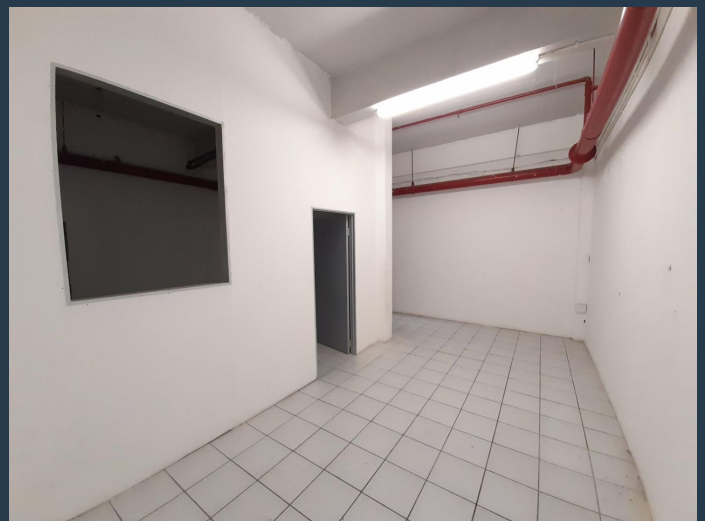
PROPERTY | WITH PURPOSE

**R18,000** per month excl. VAT

R30 per m<sup>2</sup>



[www.spire.co.za](http://www.spire.co.za)



## CONTACT US



**Nadeema Chothia**

Agent

☎ (011) 2685871

📱 083 305 5354

✉ [nadeemac@spire.co.za](mailto:nadeemac@spire.co.za)

WEB REF: CL4123

Nadeema Chothia | 083 305 5354 | [nadeemac@spire.co.za](mailto:nadeemac@spire.co.za)