

PROPERTY | WITH PURPOSE

R9,120 per month excl. VAT
R40 per m²



www.spire.co.za

TO LET



228m² Warehouse to let in Johannesburg, City and Suburban, Works @ Main is located in Johannesburg on Main Street with excellent accessibility via the M31 directly linked to the M1, M2 and the main reef road. The property is right in the hub of supportive mini-industrial nodes, such as, Doornfontein and Selby. The property offers an open plan industrial unit component, offices, ablutions, receiving and dispatching area, three phase power and secure parking bays in the basement. There are two service lifts, a large goods lift directly into the unit, 6m X 2.5m. wide roller shutter door. We have been helping businesses just like yours to find their perfect industrial spaces. Our team of property professionals are ready to find your...



WEB REF: CL4058

Nadeema Chothia | 083 305 5354 | nadeemac@spire.co.za

PROPERTY | WITH PURPOSE

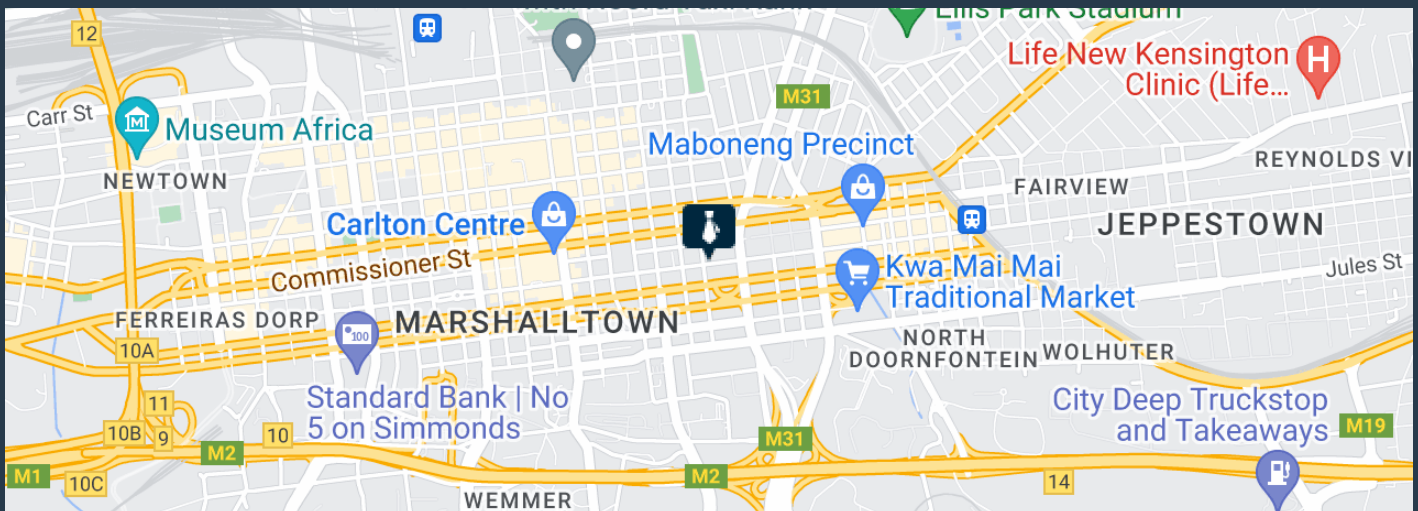
R9,120 per month excl. VAT

R40 per m²



www.spire.co.za

WAREHOUSE TO RENT IN CITY AND SUBURBAN, JOHANESBURG



PROPERTY DETAILS

▲ Security	Yes	▲ Floor Size	228m ²
		▲ Land Size	10000
		▲ Zoning	Industrial

WEB REF: CL4058

Nadeema Chothia | 083 305 5354 | nadeemac@spire.co.za

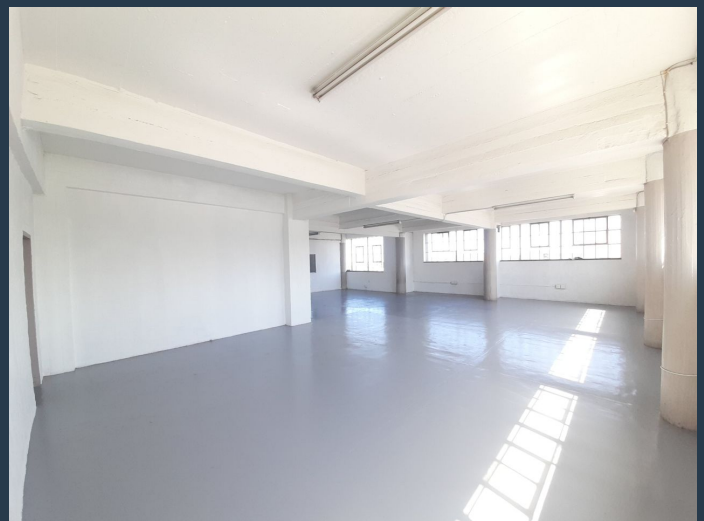
PROPERTY | WITH PURPOSE

R9,120 per month excl. VAT

R40 per m²



www.spire.co.za



CONTACT US



Nadeema Chothia

Agent

☎ (011) 2685871

📱 083 305 5354

✉ nadeemac@spire.co.za

WEB REF: CL4058

Nadeema Chothia | 083 305 5354 | nadeemac@spire.co.za