

PROPERTY | WITH PURPOSE

R19,264 per month excl. VAT

R43 per m²



www.spire.co.za

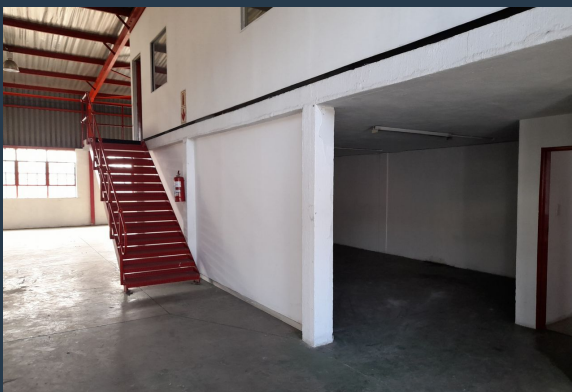
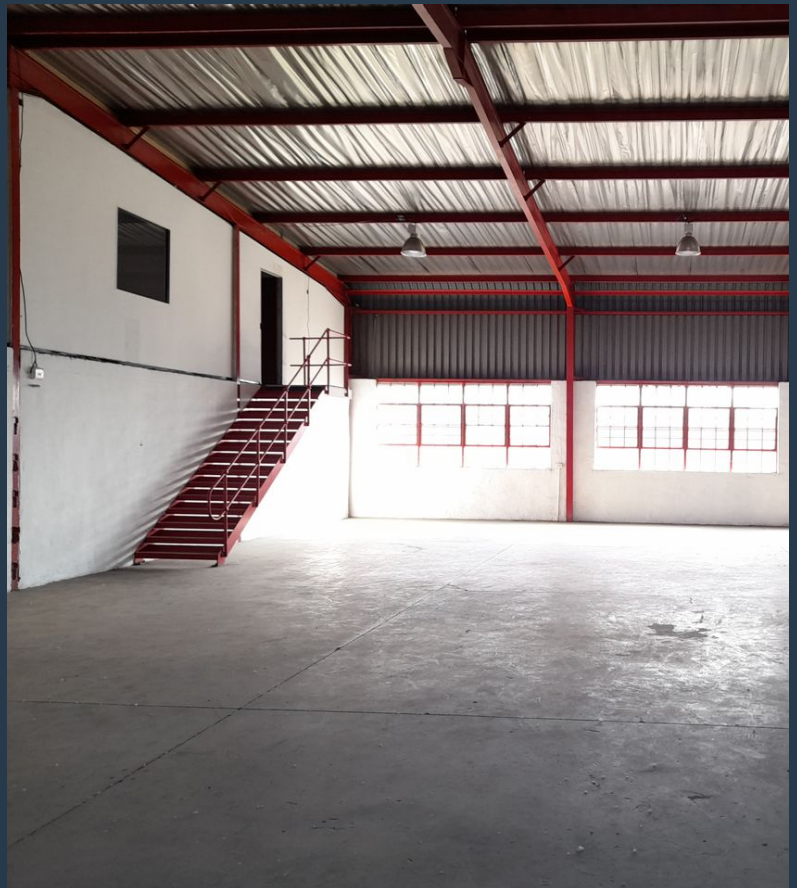
TO LET



RUSTIVIA INDUSTRIAL VILLAGE

139 Rover Road

448 m2 warehouse to rent in Rustivia, Germiston, Rustivia Industrial Village. The property offers an open plan area with approximately 6m to eaves high, an office component inside the warehouse overlooking the work area, and ablutions. There is a 6m high on grade roller shutter door and three phase power. There is easy access also for staff as the park is in close proximity to a taxi rank and train station. The property is between Barbara and Kraft Road and has easy access from most main roads including the R21, R24, M57 and the N12, as well as public transportation routes. It is only about 15 minutes from OR Tambo international. We have been helping businesses just like yours to find their perfect, industrial spaces. Our team of property...



WEB REF: SCL158

Nadeema Chothia | 083 305 5354 | nadeemac@spire.co.za

PROPERTY | WITH PURPOSE

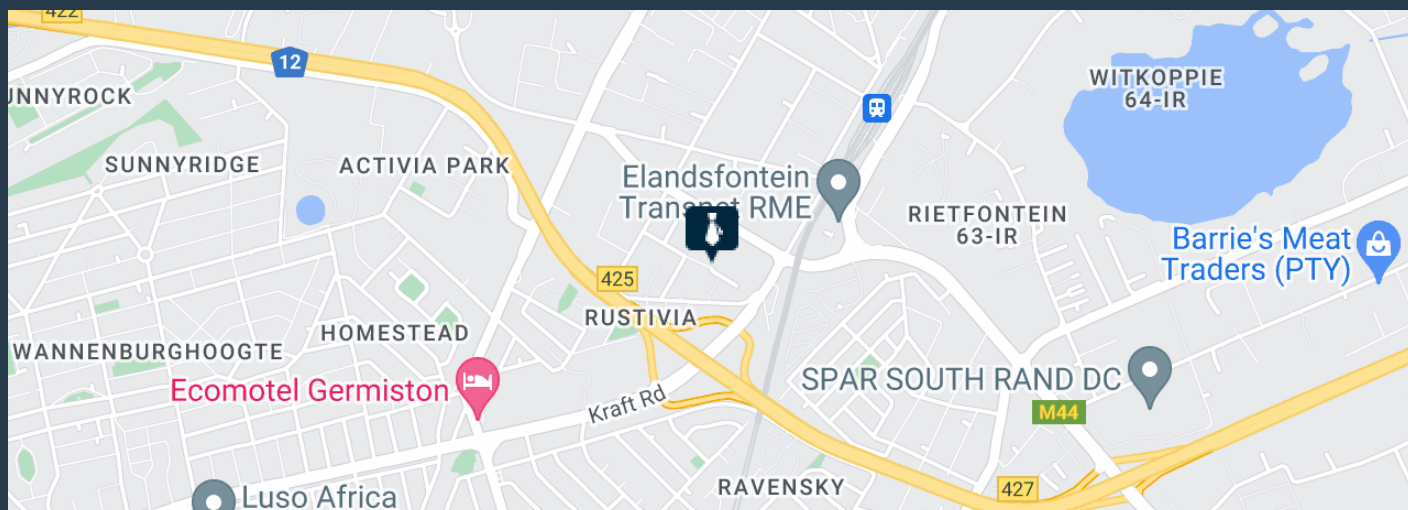
R19,264 per month excl. VAT

R43 per m²



www.spire.co.za

WAREHOUSE TO RENT IN GERMISTON



PROPERTY DETAILS

▲ Floor Size	448m ²
▲ Land Size	12000
▲ Zoning	Industrial

WEB REF: SCL158

Nadeema Chothia | 083 305 5354 | nadeemac@spire.co.za

PROPERTY | WITH PURPOSE

R19,264 per month excl. VAT

R43 per m²



www.spire.co.za



CONTACT US



Nadeema Chothia

Agent

☎ (011) 2685871

📱 083 305 5354

✉ nadeemac@spire.co.za

WEB REF: SCL158

Nadeema Chothia | 083 305 5354 | nadeemac@spire.co.za