

PROPERTY | WITH PURPOSE

R461,448 per month excl. VAT

R68 per m²

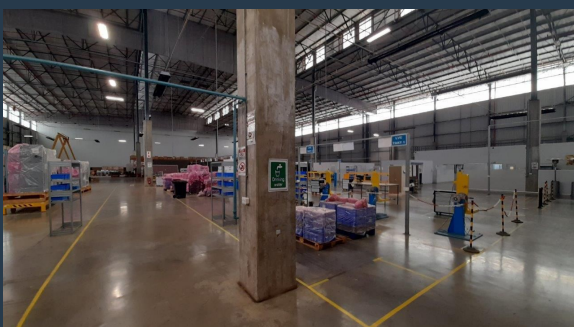


www.spire.co.za

TO LET



Magnificent warehouse strategically located on the well-known Barbara Road with excellent visibility and exposure behind the 2.6m high ClearVu fence with infra-red cameras and fibre-optic detection systems in Elandsfontein, Germiston, in close proximity to OR Tambo with easy access to the R24, N12, N3 and the R21 highways, on Barbara Road. This state-of-the-art property offers ample light industrial warehouse space of +-5786m² with a well-fitting office component of +-1000 m², reception, offices, kitchenette, boardroom and meeting rooms and generous ablution facilities. All this is offered in this Fibre-reinforced jointless construction 6786m² warehouse, engineer-designed FM2 special flatness floors with a loading bearing capacity of...



WEB REF: CL3895

Nadeema Chothia | 083 305 5354 | nadeemac@spire.co.za

PROPERTY | WITH PURPOSE

R461,448 per month excl. VAT

R68 per m²



www.spire.co.za

WAREHOUSE TO LET IN RIETFontein, HENVILLE, GERMISTON



PROPERTY DETAILS

▲ Security	Yes	▲ Floor Size	6786m ²
▲ Air Conditioning	Yes	▲ Land Size	44581
		▲ Zoning	Industrial

WEB REF: CL3895

Nadeema Chothia | 083 305 5354 | nadeemac@spire.co.za

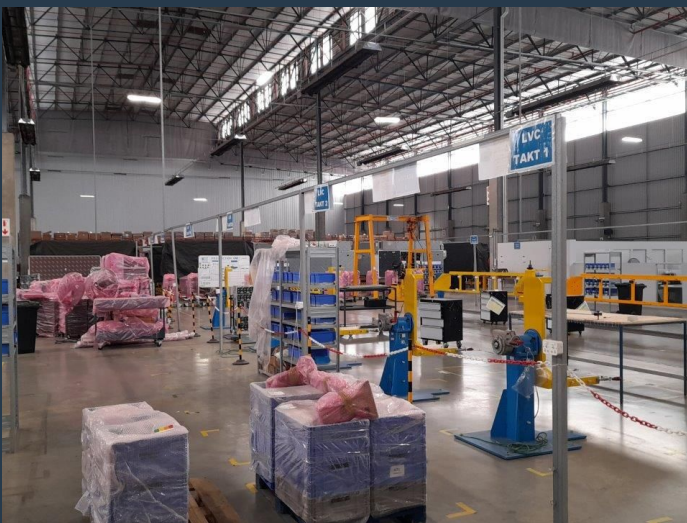
PROPERTY | WITH PURPOSE

R461,448 per month excl. VAT

R68 per m²



www.spire.co.za



CONTACT US



Nadeema Chothia

Agent

☎ (011) 2685871

📱 083 305 5354

✉ nadeemac@spire.co.za

WEB REF: CL3895

Nadeema Chothia | 083 305 5354 | nadeemac@spire.co.za