

PROPERTY | WITH PURPOSE

**R20,499** per month excl. VAT

R97 per m<sup>2</sup>



[www.spire.co.za](http://www.spire.co.za)

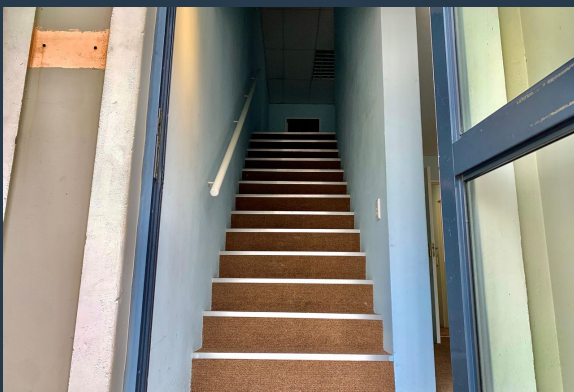
**TO LET**



**REGENT PARK**

1 Westlake drive

Warehouse for Rent - 211 m<sup>2</sup> at Westlake Business Park This 211 m<sup>2</sup> warehouse is available for rent at the prestigious Westlake Business Park. The ground floor space is fully fitted out and ready for immediate occupancy. It features a fully equipped kitchen, providing convenience for your team. Additionally, there is ample parking available, ensuring easy access for tenants and their visitors. This space is ideal for businesses looking for a functional and well-equipped warehouse in a prime location. Why Choose Offices in Westlake Business Park? Renting offices in Westlake Business Park offers numerous benefits, including a strategic location with excellent connectivity to major transport routes. The business park is known for its modern...



WEB REF: SCL1956

Logan Du Pessis | 0736449934 | [logand@spire.co.za](mailto:logand@spire.co.za)

PROPERTY | WITH PURPOSE

**R20,499** per month excl. VAT

R97 per m<sup>2</sup>



[www.spire.co.za](http://www.spire.co.za)

## 211M2 WAREHOUSE TO RENT WESTLAKE



### PROPERTY DETAILS

▲ Floor Size	211m <sup>2</sup>
▲ Zoning	Industrial

WEB REF: SCL1956

Logan Du Pessis | 0736449934 | [logand@spire.co.za](mailto:logand@spire.co.za)



PROPERTY | WITH PURPOSE

**R20,499** per month excl. VAT

R97 per m<sup>2</sup>



[www.spire.co.za](http://www.spire.co.za)



## CONTACT US



**Logan Du Pessis**  
Agent

☎ (021) 6854020

📱 0736449934

✉ [logand@spire.co.za](mailto:logand@spire.co.za)



**Kevin Hellyer**  
Candidate Property Practitioner

☎ (021) 6854020

📱 061 484 5578

✉ [kevinh@spire.co.za](mailto:kevinh@spire.co.za)