

PROPERTY | WITH PURPOSE

R30,765 per month excl. VAT

R87 per m²



www.spire.co.za

TO LET



350 m² Warehouse for Rent in Retreat Discover the ideal warehouse space for your business in the heart of Retreat. This 350 m² ground floor warehouse is fully fitted out and ready for immediate occupancy. The space is meticulously designed to meet all your operational needs, featuring modern amenities and efficient layout. In addition, ample parking is provided, ensuring convenience and ease for your team and clients. Secure your spot in a prime location known for its accessibility and business-friendly environment. Renting a warehouse in Retreat offers numerous advantages. Situated in a strategic location, Retreat provides excellent connectivity to major transport routes, making logistics and distribution operations seamless. The area...



WEB REF: SCL1981

Logan Du Pessis | 0736449934 | logand@spire.co.za

PROPERTY | WITH PURPOSE

R30,765 per month excl. VAT

R87 per m²



www.spire.co.za

350M2 WAREHOUSE FOR RENT IN RETREAT



PROPERTY DETAILS

▲ Floor Size	350m ²
▲ Zoning	Industrial

WEB REF: SCL1981

Logan Du Pessis | 0736449934 | logand@spire.co.za

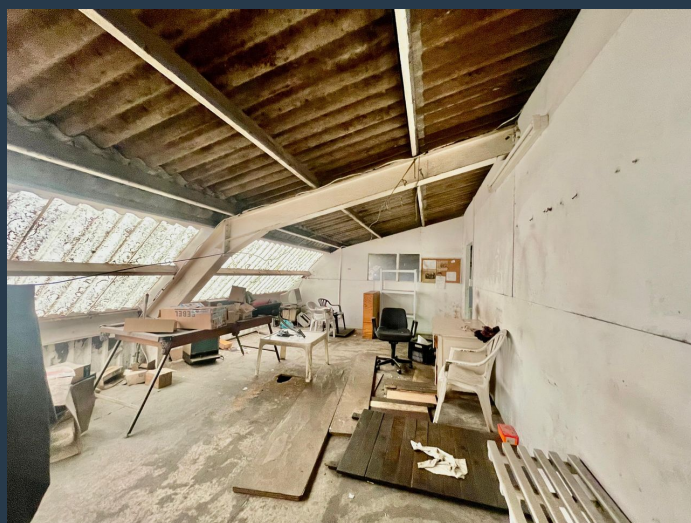
PROPERTY | WITH PURPOSE

R30,765 per month excl. VAT

R87 per m²



www.spire.co.za



CONTACT US



Logan Du Pessis
Agent

☎ (021) 6854020

📱 0736449934

✉ logand@spire.co.za



Kevin Hellyer
Candidate Property Practitioner

☎ (021) 6854020

📱 061 484 5578

✉ kevinh@spire.co.za