

PROPERTY | WITH PURPOSE

R48,938 per month excl. VAT

R87 per m²

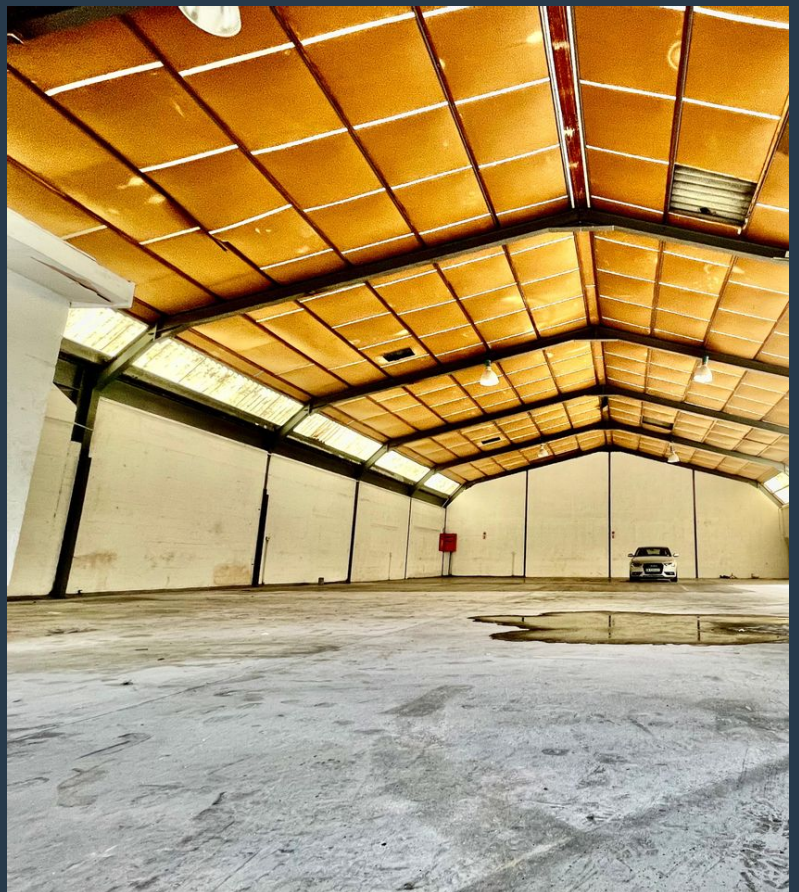
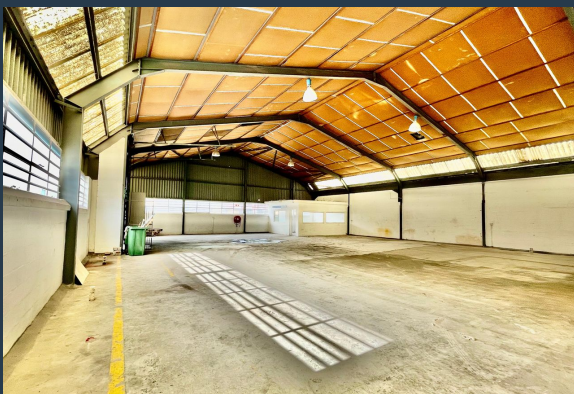


www.spire.co.za

TO LET



560 m² Warehouse for Rent in Retreat Discover a prime warehouse space in the heart of Retreat, offering 560 m² of fully fitted ground floor area, ready for immediate occupancy. This versatile space is designed to cater to various business needs, featuring modern fittings and ample natural light to create an optimal working environment. Tenants will benefit from the convenience of ample parking, ensuring easy access for employees and visitors alike. This property is ideal for businesses seeking a strategic location that combines functionality and accessibility. Why Choose Retreat for Your Warehouse Needs Renting a warehouse in Retreat presents numerous advantages for businesses. The area is known for its excellent transport links,...



WEB REF: SCL1980

Logan Du Pessis | 0736449934 | logand@spire.co.za

PROPERTY | WITH PURPOSE

R48,938 per month excl. VAT

R87 per m²



www.spire.co.za

560M2 WAREHOUSE FOR RENT IN RETREAT



PROPERTY DETAILS

▲ Floor Size	560m ²
▲ Zoning	Industrial

WEB REF: SCL1980

Logan Du Pessis | 0736449934 | logand@spire.co.za

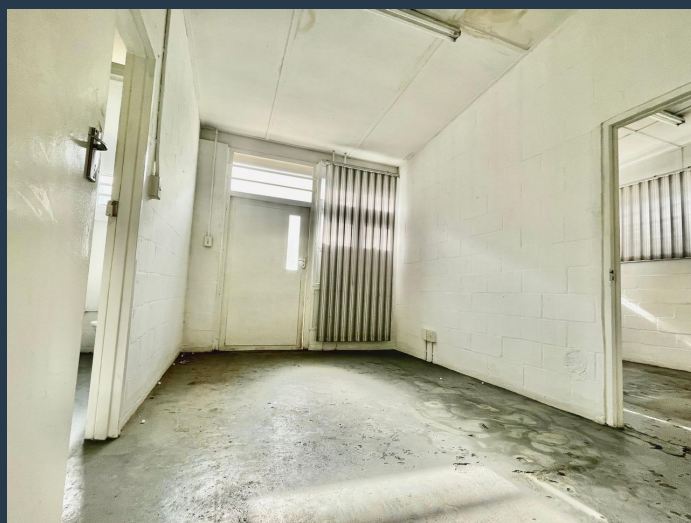
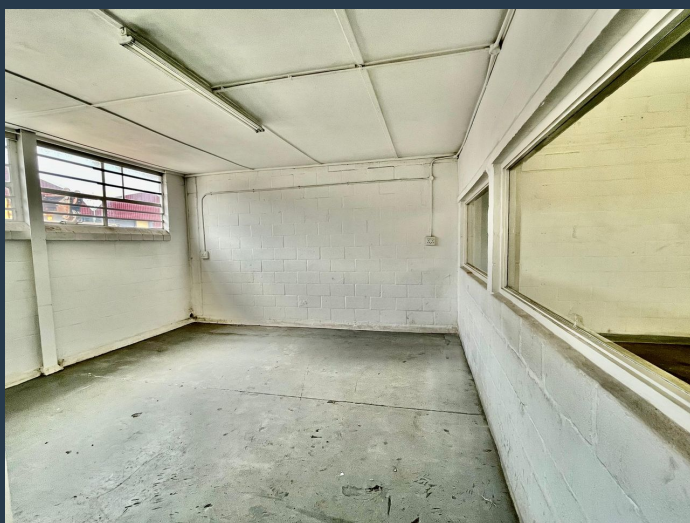
PROPERTY | WITH PURPOSE

R48,938 per month excl. VAT

R87 per m²



www.spire.co.za



CONTACT US



Logan Du Pessis
Agent

☎ (021) 6854020

📱 0736449934

✉ logand@spire.co.za



Kevin Hellyer
Candidate Property Practitioner

☎ (021) 6854020

📱 061 484 5578

✉ kevinh@spire.co.za