

PROPERTY | WITH PURPOSE

R28,690 per month excl. VAT

R95 per m²



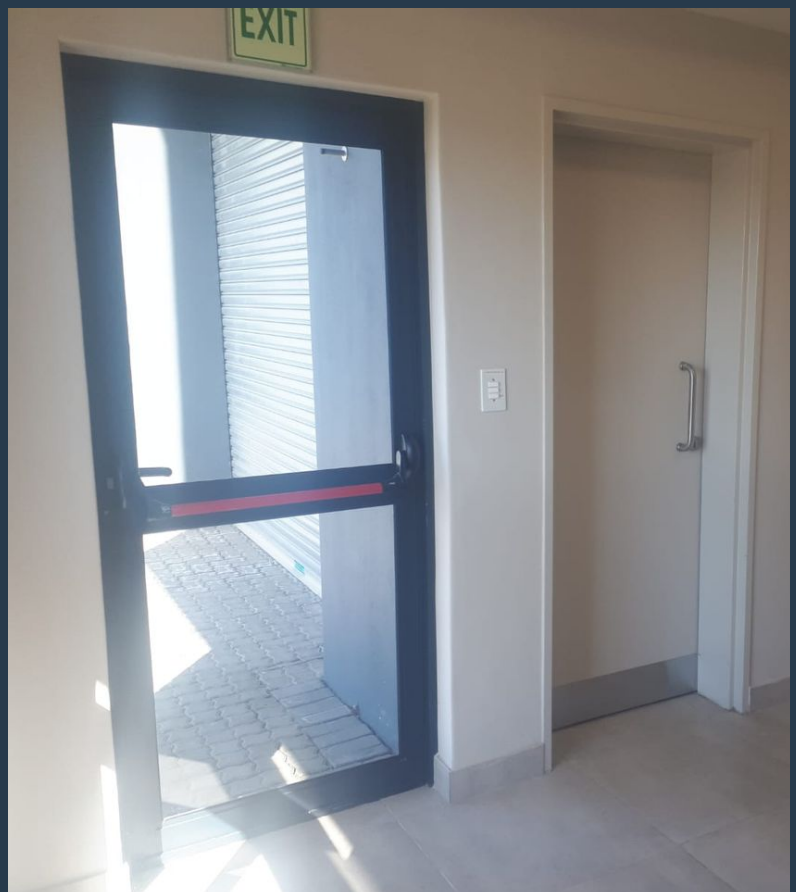
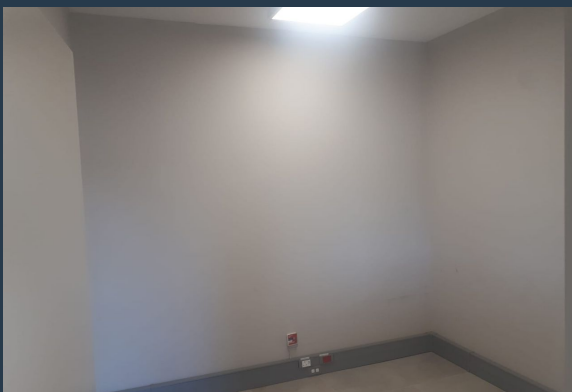
www.spire.co.za

TO LET

DAVAR PARK

16 Evolution Crescent

Industrial unit to let in Fisantekraal. This unit is newly built with AAA finishes. The warehouse offers an eave height of 5m with energy efficient lighting. Ideally suited for storage, or light manufacturing operations. NO LOADSHEDDING!!! This Newly built unit is located in the sought after Durbanville Industrial Park. Very well located in a desirable part of Fisantekraal. It is within easy access to the R302 and M137 (Okavango Road) and all other major routes in and out of Fisantekraal. The properties details are as follows: - Property Address: Fisantekraal, Cape Town - Property Type: Industrial / Warehousing - Available: Immediate - Total GLA Size: 302sqm (Warehouse: 157sqm / Office: 80sqm / Mezzanine: 65sqm) - RENTAL: R28690pm excl...



WEB REF: SCL1973

Logan Du Pessis | 0736449934 | logand@spire.co.za

PROPERTY | WITH PURPOSE

R28,690 per month excl. VAT

R95 per m²



www.spire.co.za

INDUSTRIAL UNIT TO LET IN FISANTEKRAAL - 302SQM



PROPERTY DETAILS

▲ Covered Parking	4.0	▲ Floor Size	302m ²
		▲ Zoning	Industrial

WEB REF: SCL1973

Logan Du Pessis | 0736449934 | logand@spire.co.za

PROPERTY | WITH PURPOSE

R28,690 per month excl. VAT

R95 per m²



www.spire.co.za



CONTACT US



Logan Du Pessis
Agent

☎ (021) 6854020

📱 0736449934

✉ logand@spire.co.za



Kevin Hellyer
Candidate Property Practitioner

☎ (021) 6854020

📱 061 484 5578

✉ kevinh@spire.co.za

WEB REF: SCL1973

Logan Du Pessis | 0736449934 | logand@spire.co.za