

PROPERTY | WITH PURPOSE

R22,223 per month excl. VAT

R63 per m²

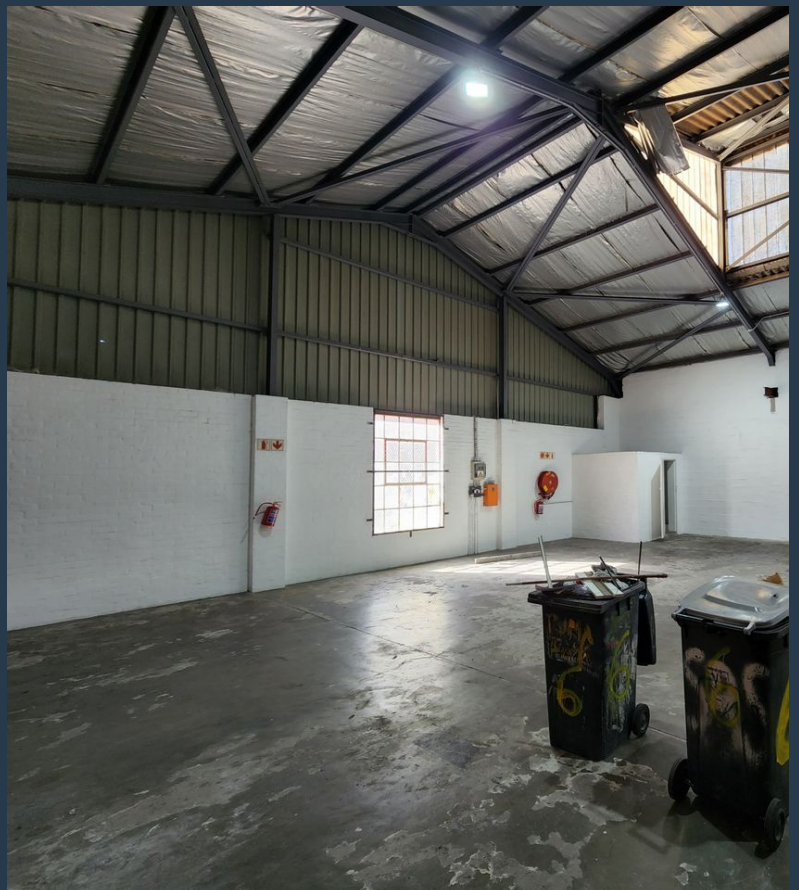


www.spire.co.za

TO LET



350m² Industrial Unit To Rent In Epping This warehouse is located in the sought after Denval Industrial Park in Epping. The park is access controlled and provides 24 hour security. The park's strategic location ensures easy access to the surrounding major roads including the N1 and N2 via Jakes Gerwel Drive (M7) running straight through the heart of Epping. The park has two points of entry which makes accessing the unit easy and convenient. The unit provides an open plan warehouse floor, offering flexibility and allows the tenant to customize the space to meet their own requirements, as well as a high ceiling and its one roller shutter door that clears 4.2m in height and is 3.5m wide. This is in addition to the dedicated office space...



WEB REF: SCL2307

Jack Taggart | 0673061828 | jackt@spire.co.za

PROPERTY | WITH PURPOSE

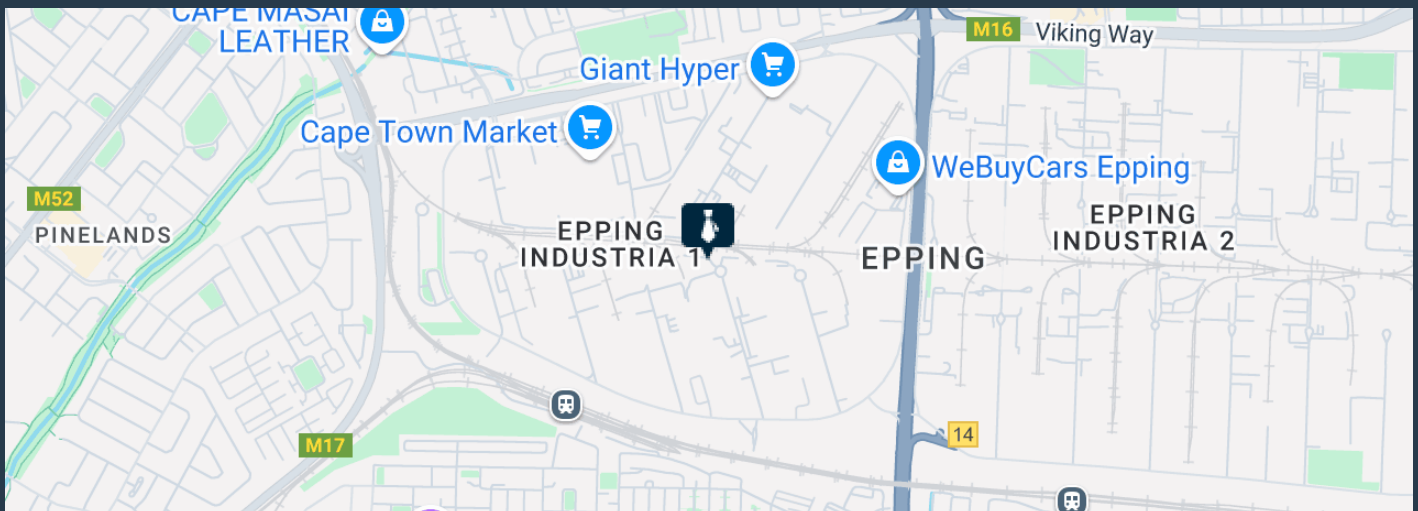
R22,223 per month excl. VAT

R63 per m²



www.spire.co.za

350M² INDUSTRIAL UNIT TO RENT IN EPPING



PROPERTY DETAILS

▲ Floor Size	350m ²
▲ Zoning	Industrial

WEB REF: SCL2307

Jack Taggart | 0673061828 | jackt@spire.co.za

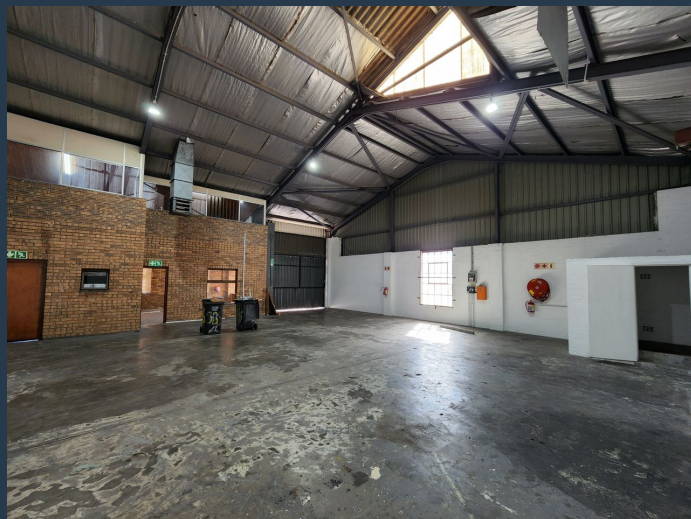
PROPERTY | WITH PURPOSE

R22,223 per month excl. VAT

R63 per m²



www.spire.co.za



CONTACT US



Jack Taggart

Agent

☎ (021) 6854020

📱 0673061828

✉ jackt@spire.co.za



Kevin Hellyer

Candidate Property Practitioner

☎ (021) 6854020

📱 061 484 5578

✉ kevinh@spire.co.za

WEB REF: SCL2307

Jack Taggart | 0673061828 | jackt@spire.co.za