

PROPERTY | WITH PURPOSE

R119,415 per month excl. VAT

R95 per m²



www.spire.co.za

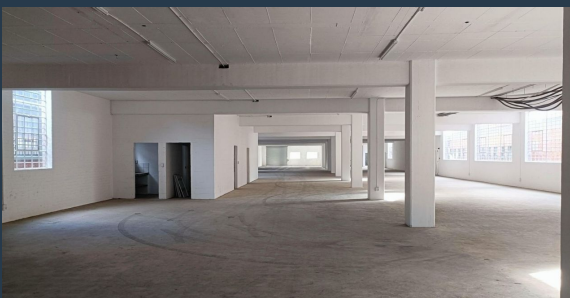
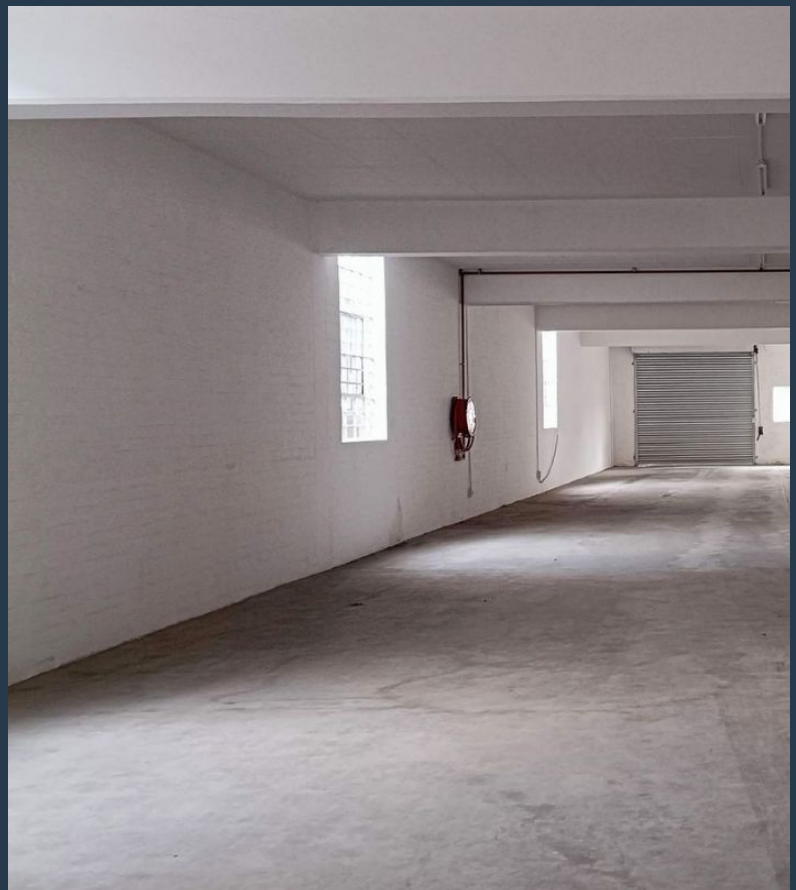
TO LET



LANDMARK 91

91 De Waal Road

1257 square meter warehouse to let in Diep River. Landmark 91 emerges as a fresh addition to Diep River, revitalizing the iconic Sheraton building for a new era. With a diverse range of spaces, it caters ideally to large industrial, warehouse, light industrial, and ground floor retail use. The upper floors offer versatile options for offices, factories, events, or call center users. Specific units are earmarked for retail and factory shop outlets, alongside office opportunities, positioning the building as a bustling business hub in the precinct, blending industrial functionality with a coffee and lifestyle offering. Equipped with inverters for lighting and pay points, and backed by a generator for common areas, Landmark 91 prioritizes...



WEB REF: SCL1822

Logan Du Pessis | 0736449934 | logand@spire.co.za

PROPERTY | WITH PURPOSE

R119,415 per month excl. VAT

R95 per m²



www.spire.co.za

WAREHOUSE TO LET IN DIEP RIVER



PROPERTY DETAILS

▲ Floor Size	1257m ²
▲ Zoning	Industrial

WEB REF: SCL1822

Logan Du Pessis | 0736449934 | logand@spire.co.za

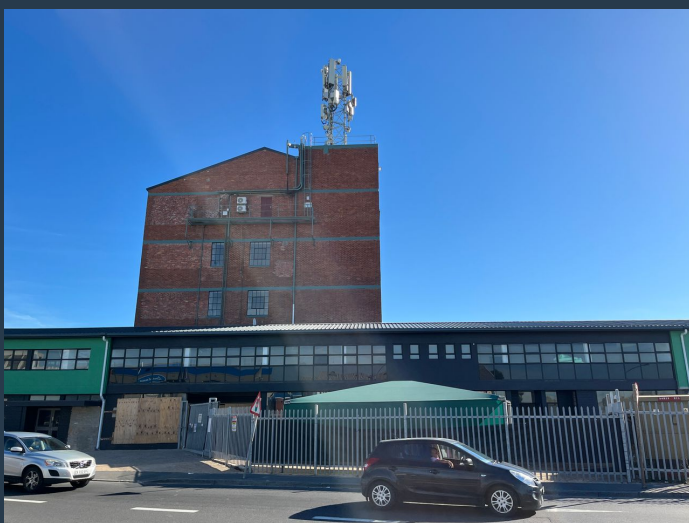
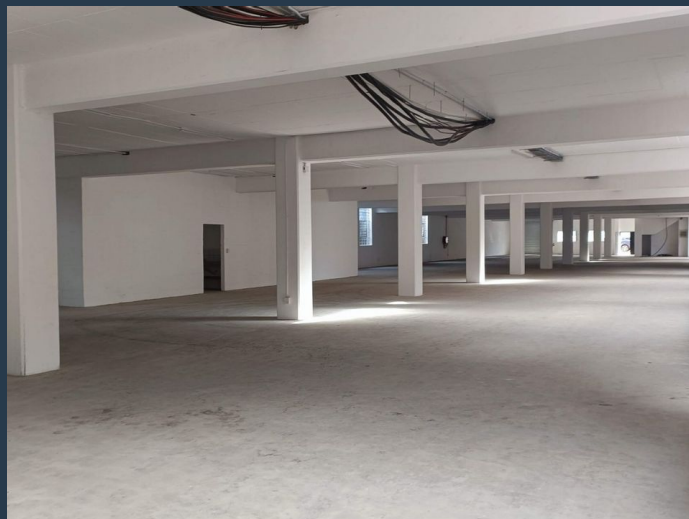
PROPERTY | WITH PURPOSE

R119,415 per month excl. VAT

R95 per m²



www.spire.co.za



CONTACT US



Logan Du Pessis
Agent

☎ (021) 6854020

📱 0736449934

✉ logand@spire.co.za



Kevin Hellyer
Candidate Property Practitioner

☎ (021) 6854020

📱 061 484 5578

✉ kevinh@spire.co.za

WEB REF: SCL1822

Logan Du Pessis | 0736449934 | logand@spire.co.za