

PROPERTY | WITH PURPOSE

**R13,624** per month excl. VAT

R52 per m<sup>2</sup>

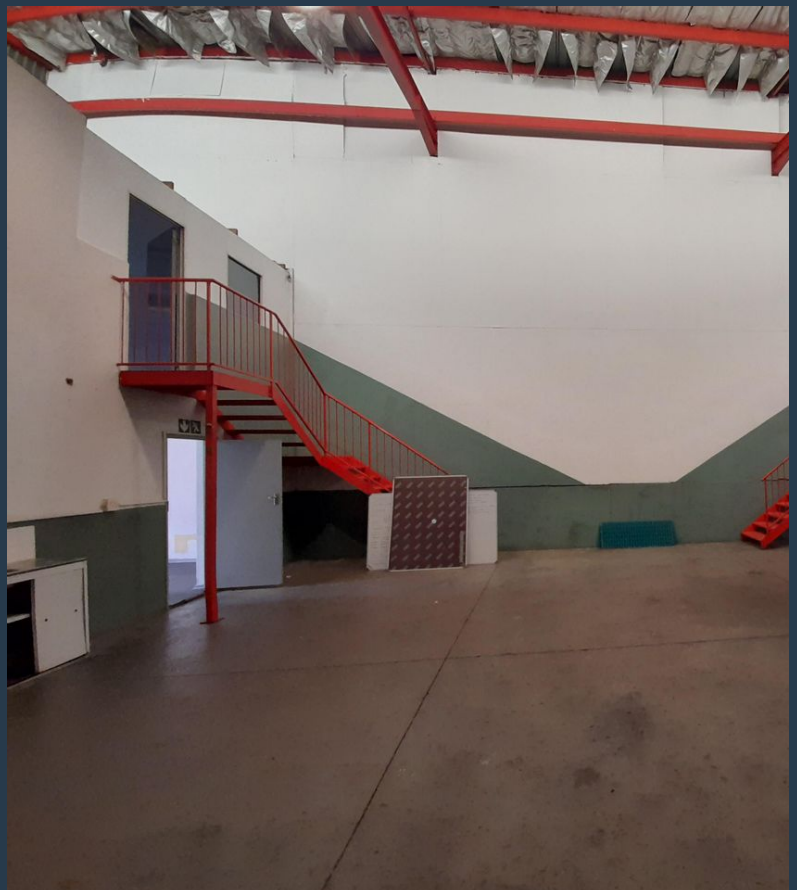
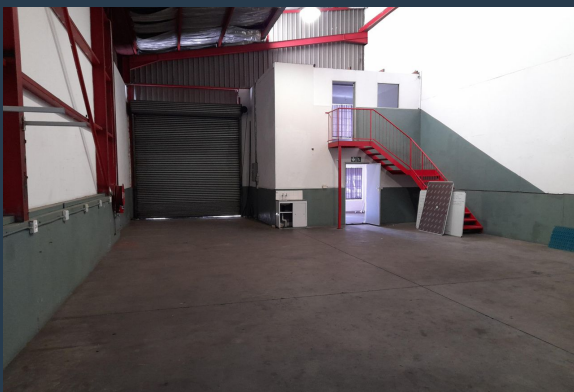


[www.spire.co.za](http://www.spire.co.za)

**TO LET**



Gateway Industrial Park has a 262m<sup>2</sup> warehouse unit to rent in Jet Park, Boksburg. The property is right on Kelly Road and has easy access to the main roads, the R21, R24, M57 and the N12, as well as public transportation routes. It is only about 10 minutes from OR Tambo international. This industrial unit offers 30 MPA bearing load on an open plan area warehouse with production offices overlooking the area, there is approximately 6m to eaves high, an office component, a mezzanine, a reception area, and ablutions. There is a 5m high on grade roller shutter door and 100 Amps of three phase power. The park Allows for super link truck access. We have been helping businesses just like yours to find their perfect, industrial spaces. Our team...



WEB REF: CL4146

Nadeema Chothia | 083 305 5354 | [nadeemac@spire.co.za](mailto:nadeemac@spire.co.za)

PROPERTY | WITH PURPOSE

**R13,624** per month excl. VAT

R52 per m<sup>2</sup>



[www.spire.co.za](http://www.spire.co.za)

## WAREHOUSE TO RENT IN JET PARK, BOKSBURG



### PROPERTY DETAILS

|            |     |              |                   |
|------------|-----|--------------|-------------------|
| ▲ Security | Yes | ▲ Floor Size | 262m <sup>2</sup> |
|            |     | ▲ Land Size  | 7000              |
|            |     | ▲ Zoning     | Industrial        |

WEB REF: CL4146

Nadeema Chothia | 083 305 5354 | [nadeemac@spire.co.za](mailto:nadeemac@spire.co.za)



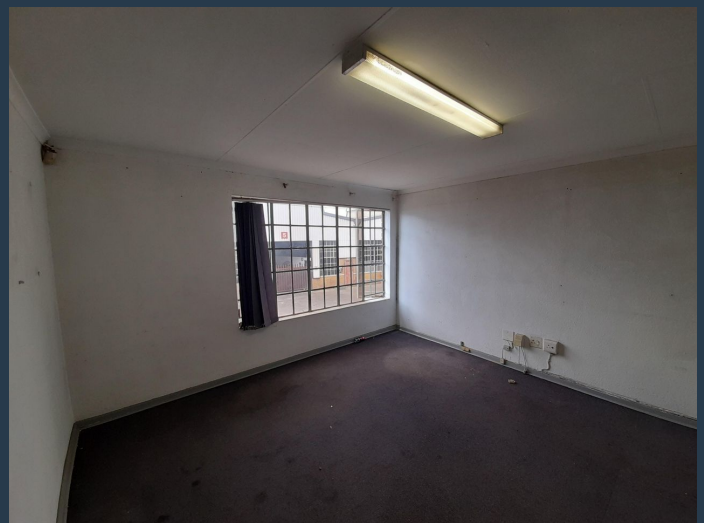
PROPERTY | WITH PURPOSE

**R13,624** per month excl. VAT

R52 per m<sup>2</sup>



[www.spire.co.za](http://www.spire.co.za)



## CONTACT US



**Nadeema Chothia**

Agent

☎ (011) 2685871

📱 083 305 5354

✉ [nadeemac@spire.co.za](mailto:nadeemac@spire.co.za)

WEB REF: CL4146

Nadeema Chothia | 083 305 5354 | [nadeemac@spire.co.za](mailto:nadeemac@spire.co.za)