

PROPERTY | WITH PURPOSE

R23,500,000



www.spire.co.za

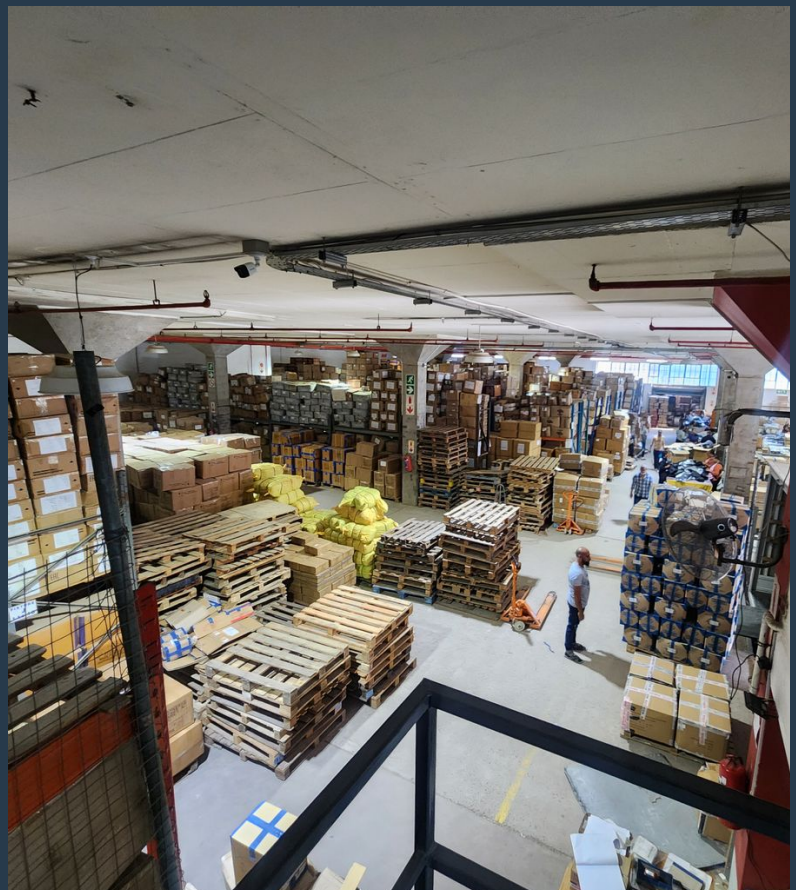
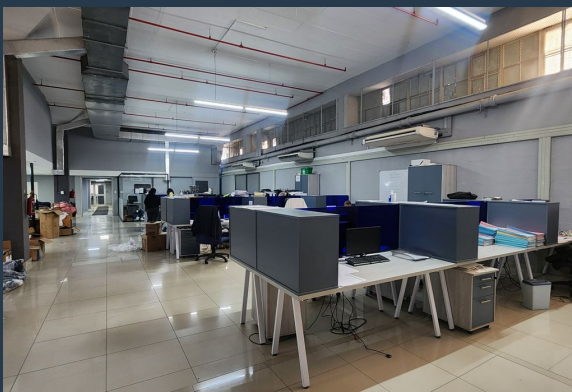
FOR SALE



BURO CRES

22 Buro Crescent

Approx 3310sqm Ground floor Warehouse for Sale in Bonella, Durban. The Unit is one of three sectional title units in the building each with their own separate entrances. This is a ground floor warehouse with approx 300sqm Office space and remainder being warehousing space with some mezz areas. The Property has 2 truck dock levelers. Roller shutters, and separate and secure staff entrance. A canteen area, Multiple toilets, Storage space and about 300amps. The building is in good nick. Would suit a manufacturing or small DC. Has 25 designated to this unit parking bays Infront of building. With each unit having its own entrance no over lapping space occurs. Levies a minimal. From the parking area which is approx 350sqm straight into the...



WEB REF: SCL2366

Mac Khoza | +27845722858 | mack@spire.co.za

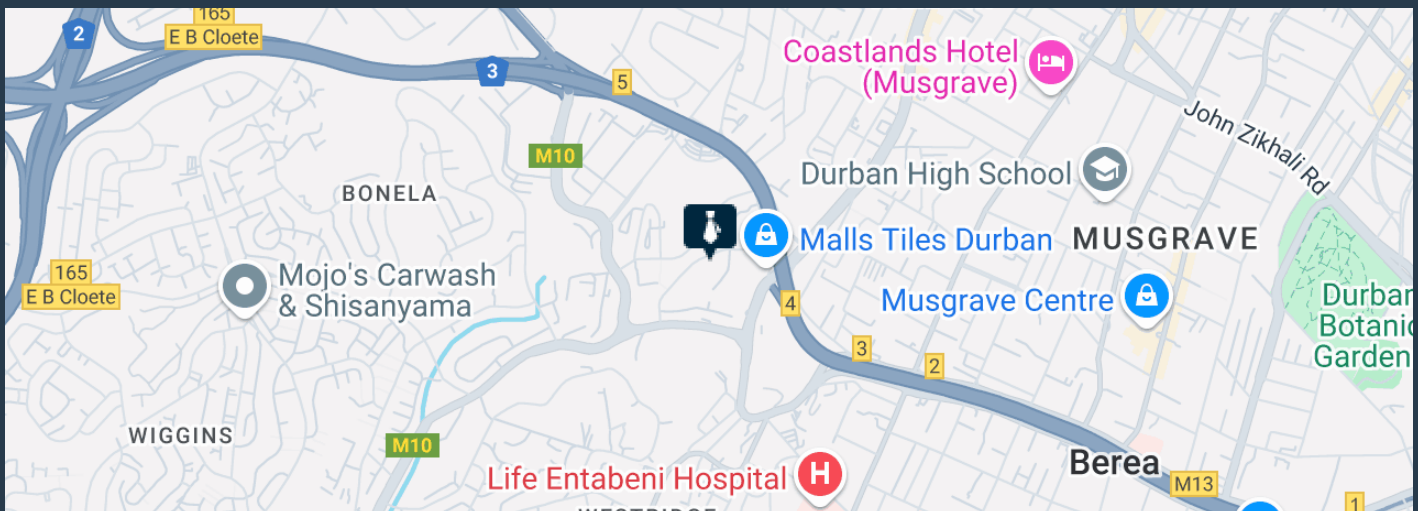
PROPERTY | WITH PURPOSE

R23,500,000



www.spire.co.za

APPROX 3310SQM GROUND FLOOR WAREHOUSE FOR SALE IN BONELLA, DURBAN



PROPERTY DETAILS

▲ Security	Yes	▲ Open Parking	25.0	▲ Floor Size	3312m ²
▲ Air Conditioning	Yes			▲ Land Size	4000
				▲ Zoning	Industrial

WEB REF: SCL2366

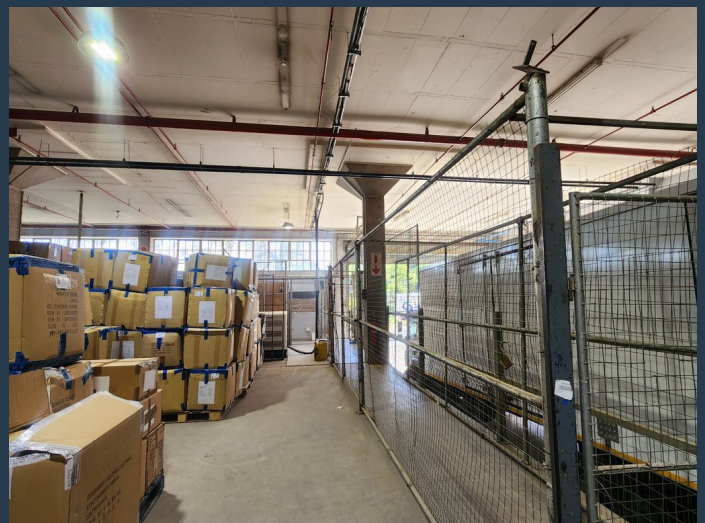
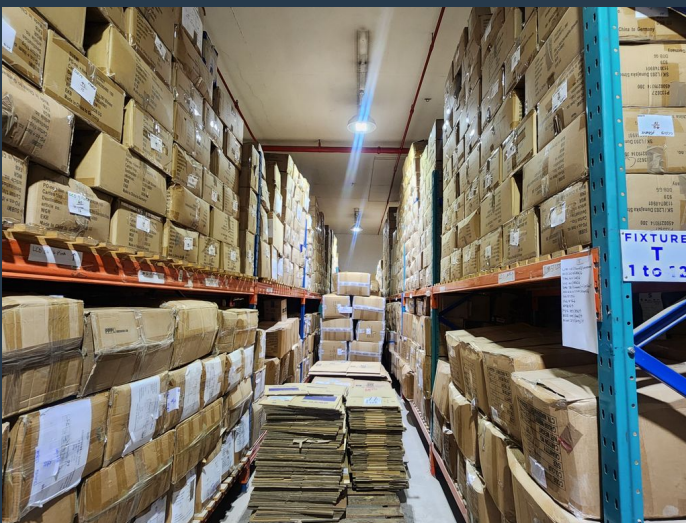
Mac Khoza | +27845722858 | mack@spire.co.za

PROPERTY | WITH PURPOSE

R23,500,000



www.spire.co.za



CONTACT US



Mac Khoza
Agent

☎ (031) 5368243

📱 +27845722858

✉ mack@spire.co.za

WEB REF: SCL2366

Mac Khoza | +27845722858 | mack@spire.co.za