

PROPERTY | WITH PURPOSE

**R24,300** per month excl. VAT

**R150** per m<sup>2</sup>

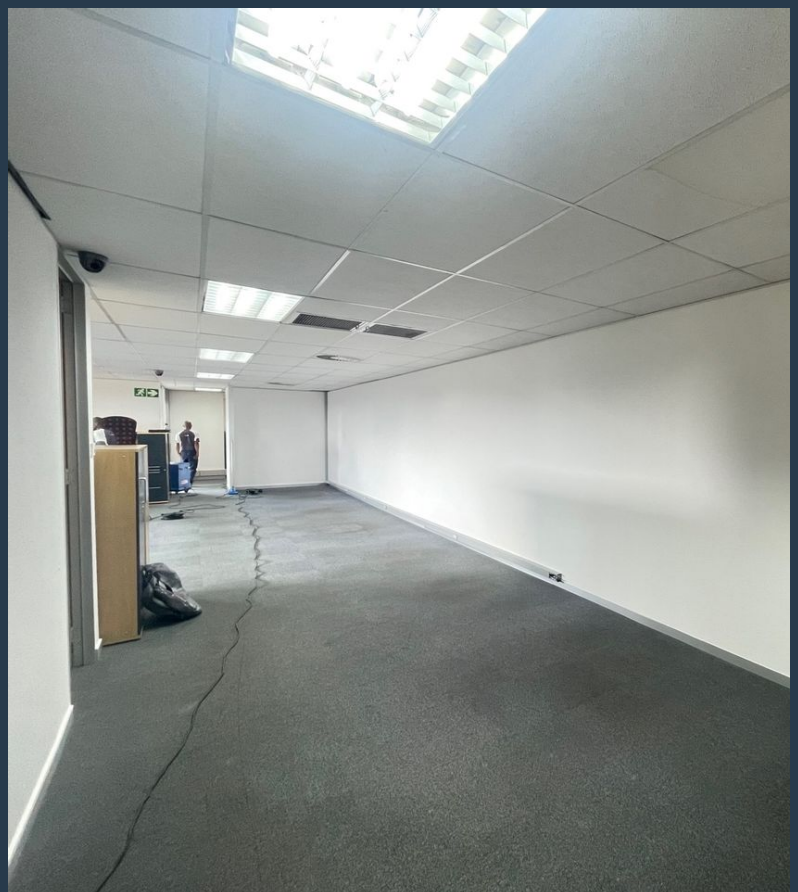
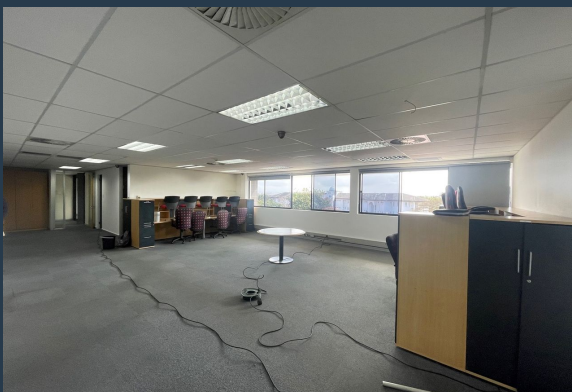


[www.spire.co.za](http://www.spire.co.za)

**TO LET**



This prime office space to rent is available in La Lucia Ridge, Umhlanga. Measuring 162m<sup>2</sup> this unit has a large open plan work area, a private office, its own kitchen and boasts an array of windows allowing lots of natural light into the office. There is also an option to lease some of the existing furniture should the prospective tenant require such. La Lucia Ridge is a suburb of Umhlanga in KwaZulu Natal, South Africa. It is a popular location for commercial offices, as it offers a tranquil and secure environment with easy access to amenities and transport routes. Torsvale Park is a large A grade business park perfectly located within close proximity to both the M4 and N2 highways, public transportation, Gateway Mall and various other...



**WEB REF: SCL1581**

**Mac Khoza | +27845722858 | [mack@spire.co.za](mailto:mack@spire.co.za)**

PROPERTY | WITH PURPOSE

**R24,300** per month excl. VAT

**R150** per m<sup>2</sup>



[www.spire.co.za](http://www.spire.co.za)

## FIRST FLOOR OFFICE SPACE TO RENT IN UMHLANGA



### PROPERTY DETAILS

▲ Security	Yes	▲ Open Parking	2.0	▲ Floor Size	162m <sup>2</sup>
▲ Air Conditioning	Yes	▲ Basement Parking	8.0	▲ Zoning	Commercial

WEB REF: SCL1581

Mac Khoza | +27845722858 | [mack@spire.co.za](mailto:mack@spire.co.za)



PROPERTY | WITH PURPOSE

**R24,300** per month excl. VAT  
R150 per m<sup>2</sup>



[www.spire.co.za](http://www.spire.co.za)



## CONTACT US



**Mac Khoza**  
Agent

📞 (031) 5368243

📱 +27845722858

✉️ [mack@spire.co.za](mailto:mack@spire.co.za)

WEB REF: SCL1581

Mac Khoza | +27845722858 | [mack@spire.co.za](mailto:mack@spire.co.za)