

PROPERTY | WITH PURPOSE

R363,660 per month excl. VAT

R165 per m²



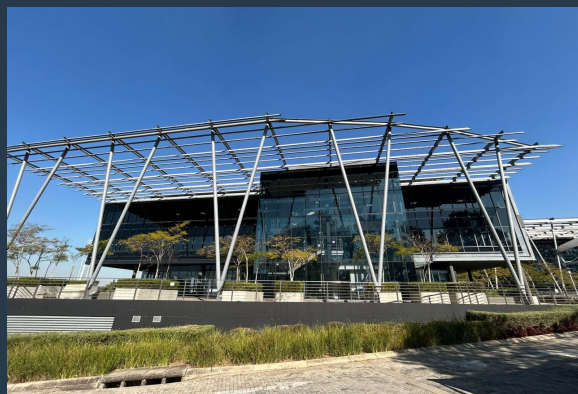
www.spire.co.za

TO LET

WOODMEAD NORTH OFFICE PARK

54 Maxwell Drive

2204m² Office Building to rent in Woodmead. This ultra-modern, 3-storey building features a striking design with double-glazed glass façades, abundant natural light, and a unique circular ground floor layout that opens to a garden-facing patio. Each floor (±730m²) is white-boxed and includes ceilings, lighting, kitchens, ablutions, and air conditioning—minimizing fit-out costs. A 5-Star Green Building rating ensures energy efficiency and operational savings. Located in the prestigious Woodmead North Office Park, this 2,200m² standalone building offers exceptional visibility onto the N1 highway. Surrounded by leading national and international tenants, it provides a prime location at a significantly lower rental than similar space in...



WEB REF: SCL2460

Brandon Munyanyi | 0746705886 | brandonm@spire.co.za

PROPERTY | WITH PURPOSE

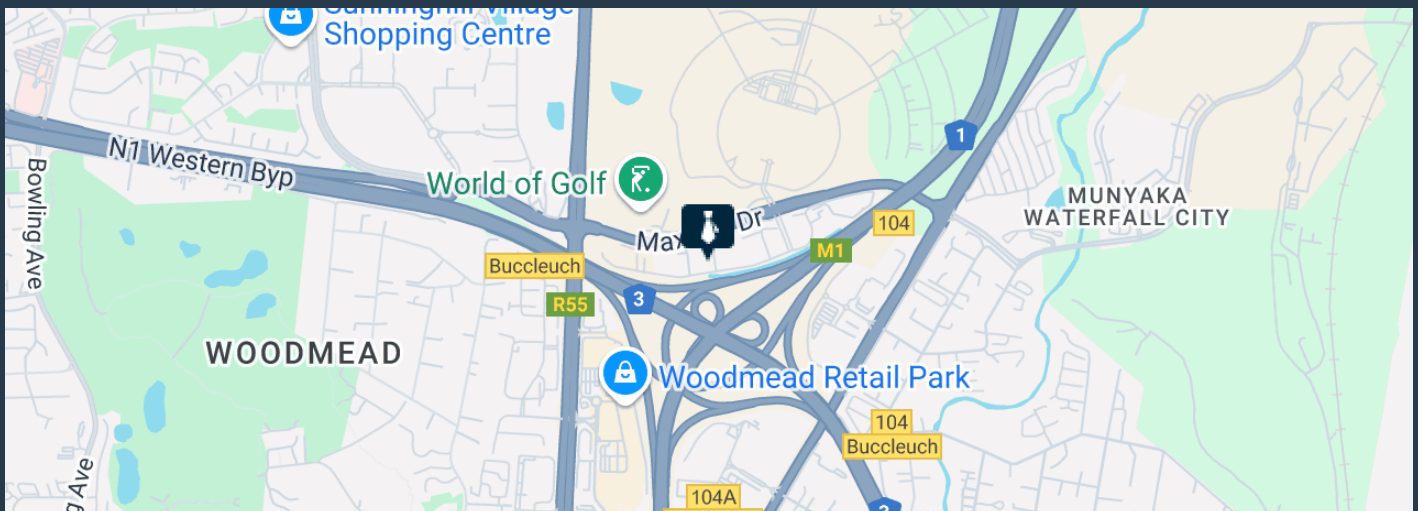
R363,660 per month excl. VAT

R165 per m²



www.spire.co.za

2204M2 OFFICE BUILDING TO RENT IN WOODMEAD - WOODMEAD NORTH OFFICE...



PROPERTY DETAILS

▲ Security	Yes	▲ Floor Size	2204m ²
▲ Air Conditioning	Yes	▲ Land Size	2400
		▲ Zoning	Commercial

WEB REF: SCL2460

Brandon Munyanyi | 0746705886 | brandonm@spire.co.za

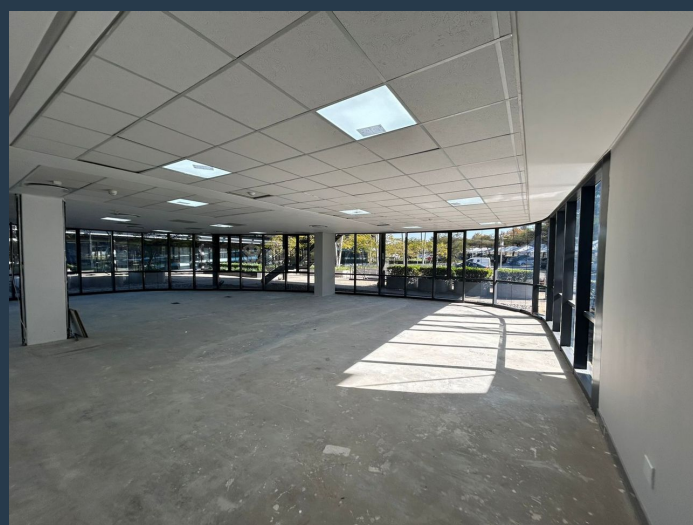
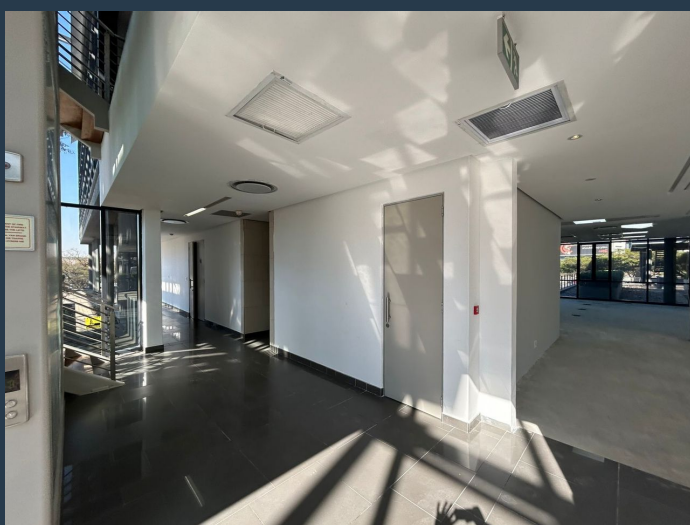
PROPERTY | WITH PURPOSE

R363,660 per month excl. VAT

R165 per m²



www.spire.co.za



CONTACT US



Brandon Munyanyi

Agent

☎ (011) 2685871

📱 0746705886

✉ brandonm@spire.co.za

WEB REF: SCL2460

Brandon Munyanyi | 0746705886 | brandonm@spire.co.za