

PROPERTY | WITH PURPOSE

R102,903 per month excl. VAT

R135 per m²



www.spire.co.za

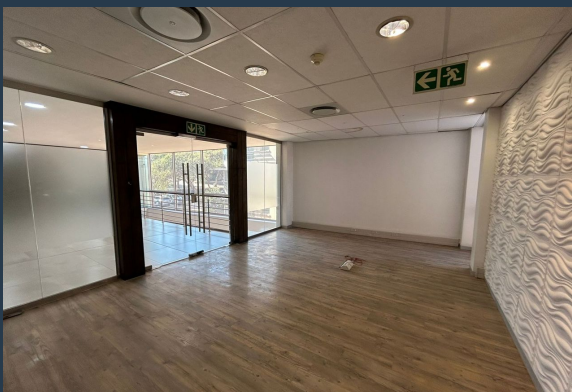
TO LET



THE WOODLANDS OFFICE PARK

20 Woodlands Drive

762m² Office Space to rent in Woodmead. The office is fully fitted out, featuring a spacious open-plan layout, a dedicated kitchen area, and a combination of private offices and meeting rooms to suit a modern working environment. The layout offers flexibility for a range of tenant requirements and is ready for immediate occupation, while the landlord also provides a tenant installation allowance to assist with any custom design or branding needs. This ensures a seamless transition into a space that supports productivity and professionalism from day one. Located in the heart of Woodmead, this 762 sqm AAA-grade office space is available to let in the highly sought-after Woodlands Office Park. Renowned for its serene setting and secure,...



WEB REF: SCL2458

Brandon Munyanyi | 0746705886 | brandonm@spire.co.za

PROPERTY | WITH PURPOSE

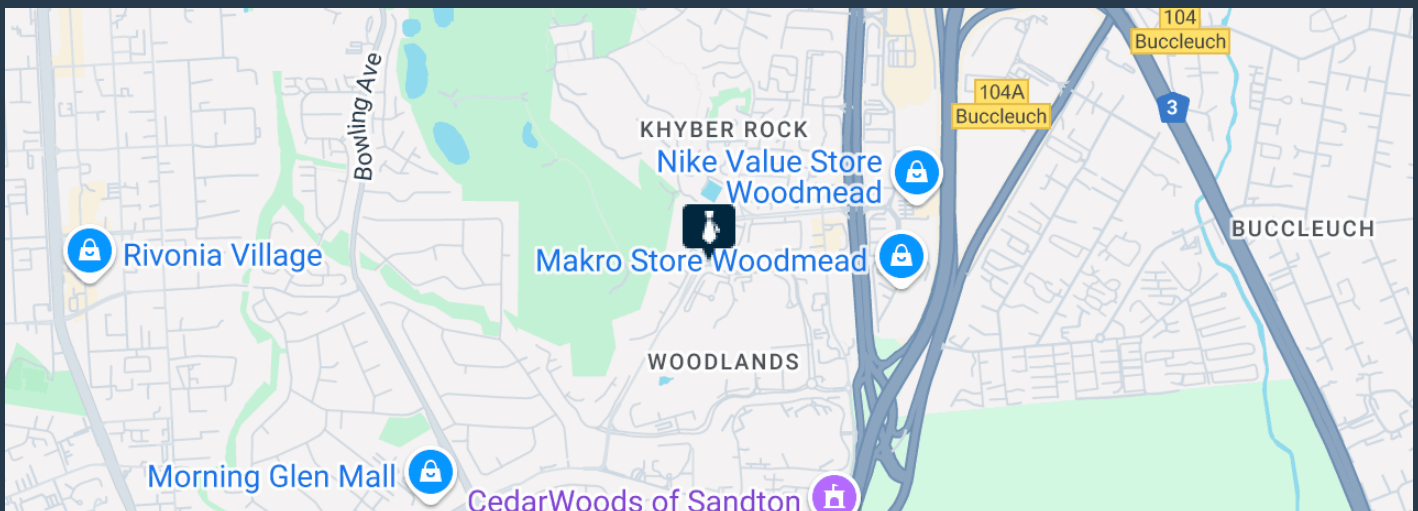
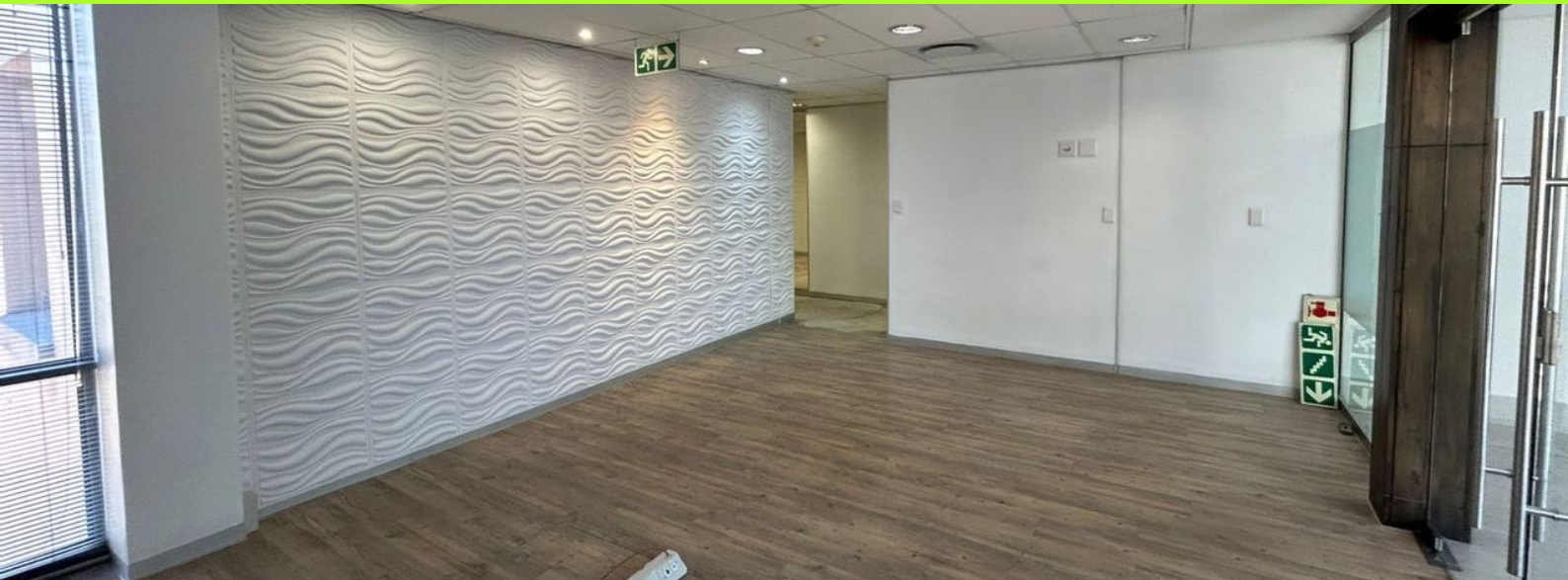
R102,903 per month excl. VAT

R135 per m²



www.spire.co.za

762M2 OFFICE SPACE TO RENT IN WOODMEAD - THE WOODLANDS OFFICE PARK



PROPERTY DETAILS

▲ Security	Yes	▲ Floor Size	762m ²
▲ Air Conditioning	Yes	▲ Land Size	800
		▲ Zoning	Commercial

WEB REF: SCL2458

Brandon Munyanyi | 0746705886 | brandonm@spire.co.za

PROPERTY | WITH PURPOSE

R102,903 per month excl. VAT

R135 per m²



www.spire.co.za



CONTACT US



Brandon Munyanyi

Agent

☎ (011) 2685871

📱 0746705886

✉ brandonm@spire.co.za

WEB REF: SCL2458

Brandon Munyanyi | 0746705886 | brandonm@spire.co.za