

PROPERTY | WITH PURPOSE

R153,160 per month excl. VAT

R125 per m²



www.spire.co.za

TO LET



WOODLANDS ESTATE

1 Woodlands Drive

Woodmead Estate, ideally located in the heart of Woodmead, offers exceptional accessibility to major highways and is in close proximity to public transport options, including the Gautrain bus route. Boasting high visibility on Woodmead Drive, the estate is fiber-ready, securely monitored with 24-hour surveillance, and surrounded by peaceful breakaway gardens, providing a perfect blend of convenience and tranquility. This ground-floor office space features a thoughtfully designed, fully fitted layout, making it move-in ready. The unit is flooded with natural light through large windows, creating a bright and welcoming atmosphere, and is equipped with full air conditioning for year-round comfort. Additionally, Woodmead Estate supports...



WEB REF: SCL2378

Brandon Munyanyi | 0746705886 | brandonm@spire.co.za

PROPERTY | WITH PURPOSE

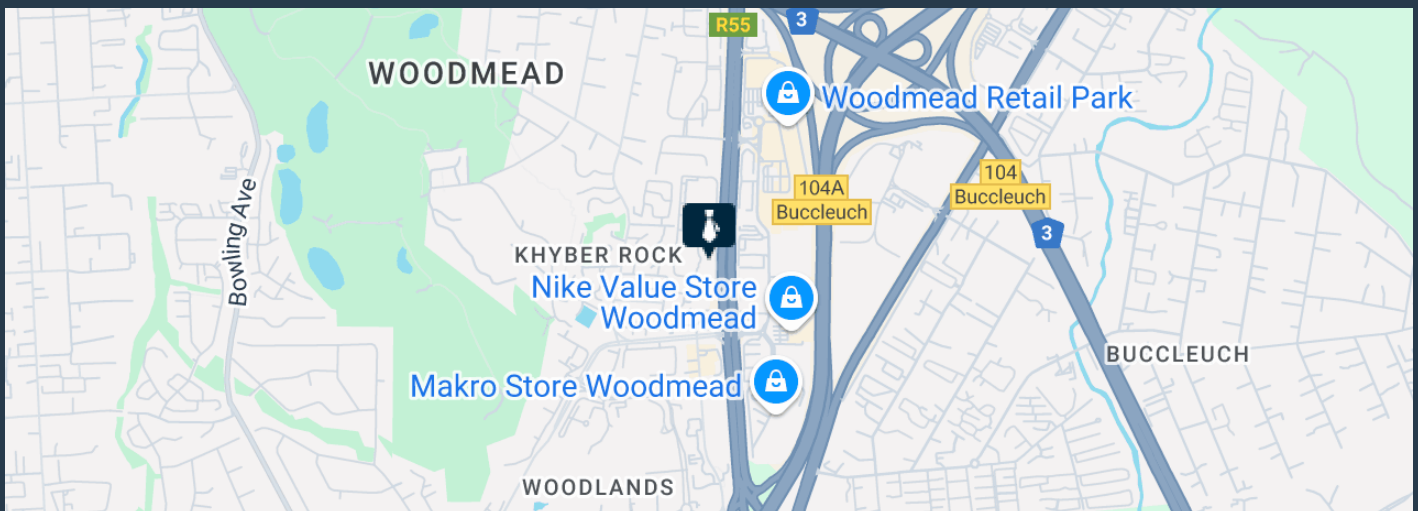
R153,160 per month excl. VAT

R125 per m²



www.spire.co.za

STUNNING COMMERCIAL OFFICE SPACE TO LET IN WOODMEAD



PROPERTY DETAILS

▲ Security	Yes	▲ Open Parking	15.0	▲ Floor Size	1225m ²
▲ Air Conditioning	Yes	▲ Basement Parking	15.0	▲ Zoning	Commercial

WEB REF: SCL2378

Brandon Munyanyi | 0746705886 | brandonm@spire.co.za

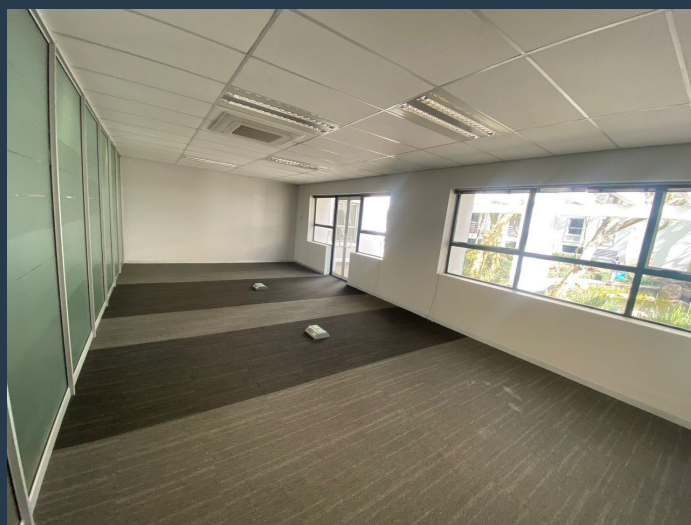
PROPERTY | WITH PURPOSE

R153,160 per month excl. VAT

R125 per m²



www.spire.co.za



CONTACT US



Brandon Munyanyi

Agent

📞 (011) 2685871

📱 0746705886

✉️ brandonm@spire.co.za

WEB REF: SCL2378

Brandon Munyanyi | 0746705886 | brandonm@spire.co.za