

PROPERTY | WITH PURPOSE

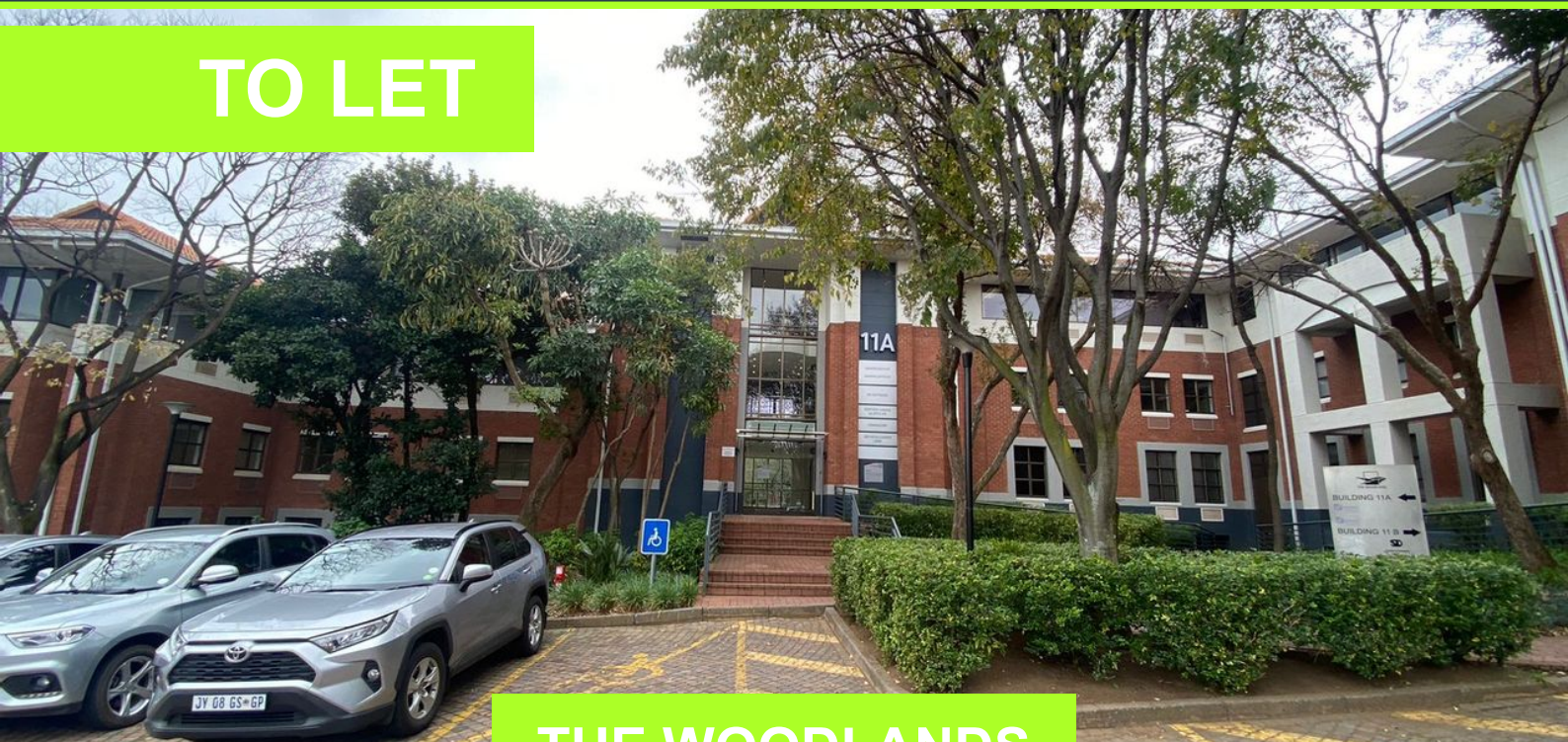
R113,805 per month excl. VAT

R135 per m²



www.spire.co.za

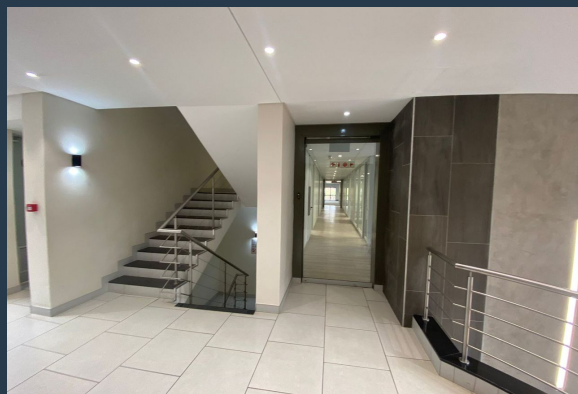
TO LET



THE WOODLANDS

20 Woodlands Drive

This well-appointed ground floor office unit in Building 11A at 20 Woodlands Drive offers an ideal solution for established businesses seeking a secure, functional, and professional workspace. The unit features 12 private offices and 5 boardrooms, providing an optimal mix of focused workspaces and collaborative areas. The unit is situated within a 24-hour access-controlled office park, offering a secure, move-in-ready environment that promotes both productivity and peace of mind, all set against a tranquil, nature-filled backdrop. Key amenities include: Climate Control: Air conditioning throughout for year-round comfort. Connectivity: High-speed Wi-Fi for seamless communication. Convenience: A fully equipped kitchen and private balcony...



WEB REF: SCL2377

Brandon Munyanyi | 0746705886 | brandonm@spire.co.za

PROPERTY | WITH PURPOSE

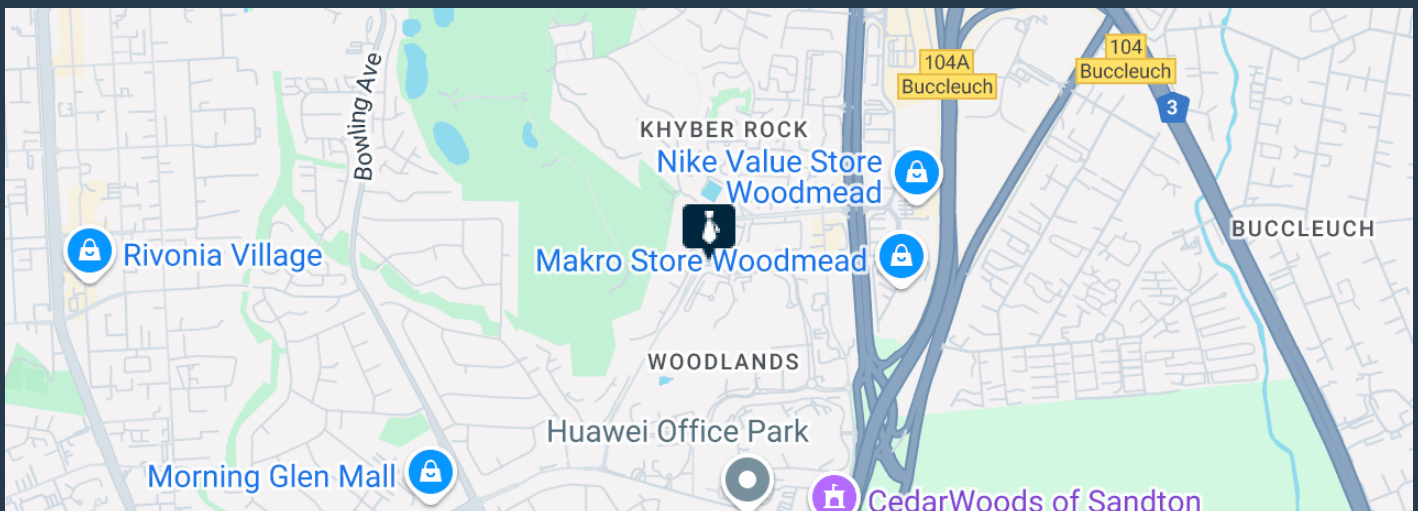
R113,805 per month excl. VAT

R135 per m²



www.spire.co.za

OFFICE SPACE TO LET AT WOODLANDS OFFICE PARK, WOODMEAD



PROPERTY DETAILS

▲ Security	Yes	▲ Open Parking	8.0	▲ Floor Size	843m ²
▲ Air Conditioning	Yes	▲ Covered Parking	4.0	▲ Zoning	Commercial
		▲ Basement Parking	15.0		

WEB REF: SCL2377

Brandon Munyanyi | 0746705886 | brandonm@spire.co.za

PROPERTY | WITH PURPOSE

R113,805 per month excl. VAT

R135 per m²



www.spire.co.za



CONTACT US



Brandon Munyanyi

Agent

☎ (011) 2685871

📱 0746705886

✉ brandonm@spire.co.za

WEB REF: SCL2377

Brandon Munyanyi | 0746705886 | brandonm@spire.co.za