

PROPERTY | WITH PURPOSE

R47,880 per month excl. VAT

R90 per m²

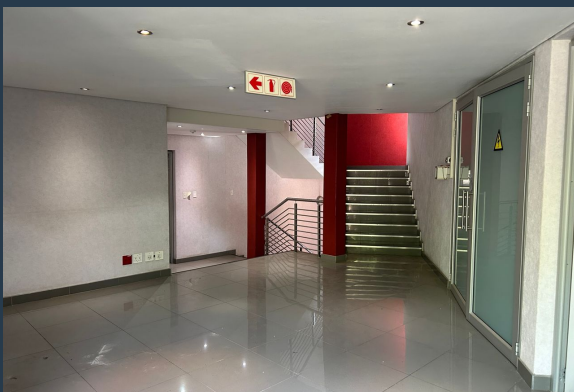


www.spire.co.za

TO LET



532m² of A-Grade Offices To Let in Healthcare Park, Woodmead. Building comprises 2 floors, with each floor having 532m² of A-grade Office space. There is a good fit-out in place, with assorted offices and open plan areas. The Office Park offers 24 hour security, a coffee shop, back-up water and break-away gardens. The property is well located in Woodmead, close to retail amenities and with easy access to the M1, N1 and N3 motorways connecting Johannesburg and Pretoria as well as OR Tambo International Airport. Spire have a team of Commercial Property Specialists who have the resources and experience to analyze and process the industry's trends and provide expert advice and solutions for our clients. We offer end to end Corporate Real...



WEB REF: SCL1242

Brandon Munyanyi | 0746705886 | brandonm@spire.co.za

PROPERTY | WITH PURPOSE

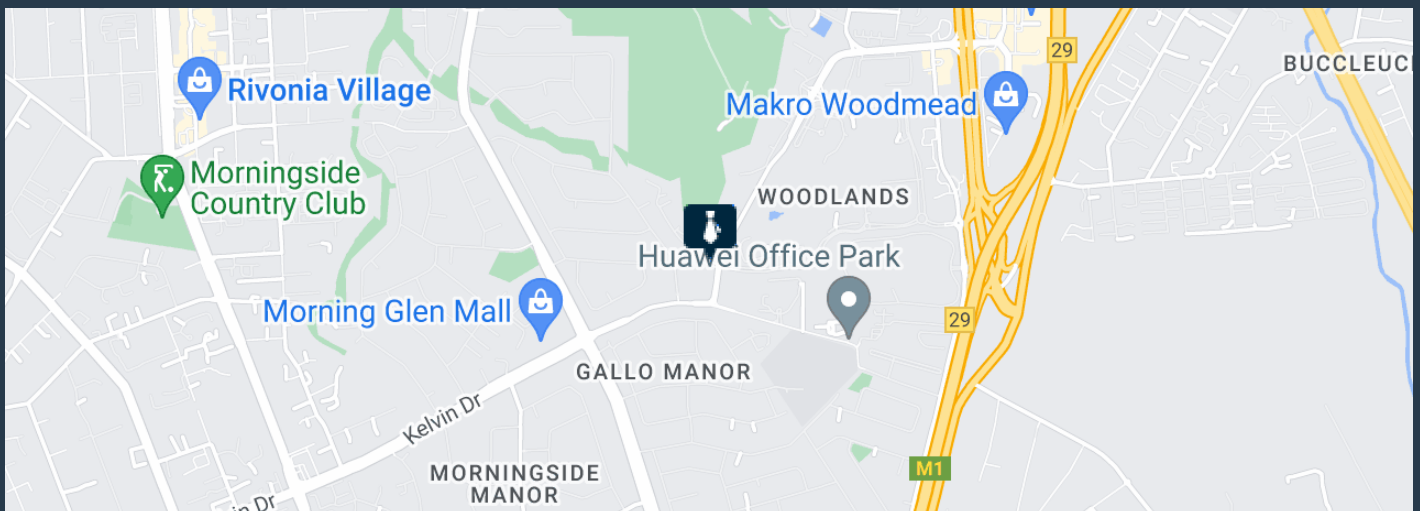
R47,880 per month excl. VAT

R90 per m²



www.spire.co.za

532M² OFFICES TO LET IN WOODMEAD



PROPERTY DETAILS

| | |
|--------------|-------------------|
| ▲ Floor Size | 532m ² |
| ▲ Zoning | Commercial |

WEB REF: SCL1242

Brandon Munyanyi | 0746705886 | brandonm@spire.co.za

PROPERTY | WITH PURPOSE

R47,880 per month excl. VAT

R90 per m²



www.spire.co.za



CONTACT US



Brandon Munyanyi

Agent

☎ (011) 2685871

📱 0746705886

✉ brandonm@spire.co.za

WEB REF: SCL1242

Brandon Munyanyi | 0746705886 | brandonm@spire.co.za