

PROPERTY | WITH PURPOSE

**R143,300** per month excl. VAT

R100 per m<sup>2</sup>



[www.spire.co.za](http://www.spire.co.za)

**TO LET**

## WOODMEAD OFFICE PARK

28 Saddle

The office park is located close to the Woodmead Sandton off ramp of the M1 highway, a beautifully manicured office park with restaurants and walking paths. \* Full backup generator, \* Ample parking in basement, shaded and open bays \* Highway frontage for signage. \* Wheel chair access to the building and a lift to all floors. This office building offers price of R 100/m<sup>2</sup> INCLUDING water and electricity for offices areas above 1200m<sup>2</sup>. Don't miss this amazing offering. Woodmead, Sandton is a prime location for businesses and easy access to highway offramps. Spire have a team of Commercial Property Specialists who have the resources and experience to analyse and process the industry's trends and provide expert advice and...



WEB REF: CL3816

Nadeema Chothia | 083 305 5354 | [nadeemac@spire.co.za](mailto:nadeemac@spire.co.za)

PROPERTY | WITH PURPOSE

**R143,300** per month excl. VAT

R100 per m<sup>2</sup>



[www.spire.co.za](http://www.spire.co.za)

## TO LET OFFICES IN WOODMEAD SANDTON



### PROPERTY DETAILS

▲ Security	Yes	▲ Floor Size	1423m <sup>2</sup>
▲ Air Conditioning	Yes	▲ Zoning	Commercial

WEB REF: CL3816

Nadeema Chothia | 083 305 5354 | [nadeemac@spire.co.za](mailto:nadeemac@spire.co.za)



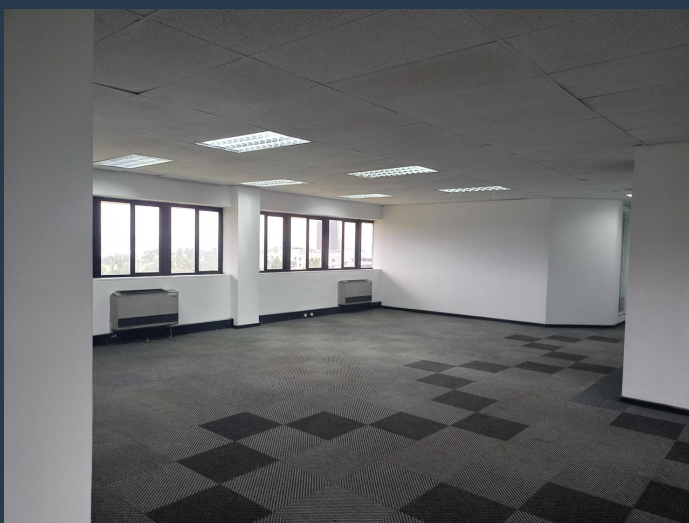
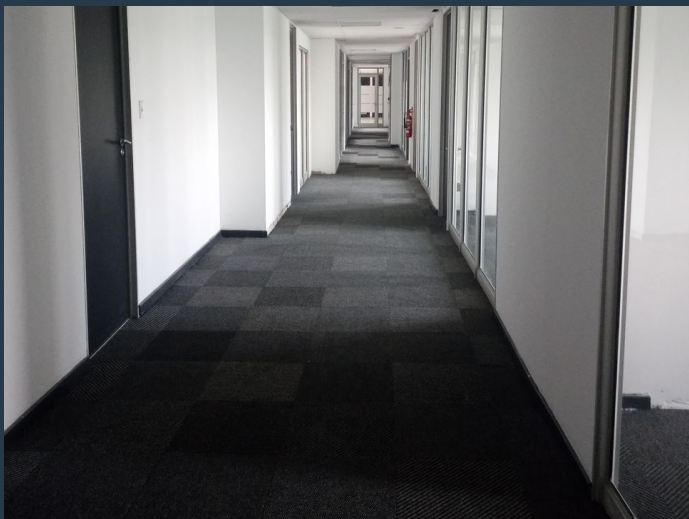
PROPERTY | WITH PURPOSE

**R143,300** per month excl. VAT

R100 per m<sup>2</sup>



[www.spire.co.za](http://www.spire.co.za)



## CONTACT US



**Nadeema Chothia**

Agent

☎ (011) 2685871

📱 083 305 5354

✉ [nadeemac@spire.co.za](mailto:nadeemac@spire.co.za)

WEB REF: CL3816

Nadeema Chothia | 083 305 5354 | [nadeemac@spire.co.za](mailto:nadeemac@spire.co.za)