

PROPERTY | WITH PURPOSE

R78,625 per month excl. VAT

R185 per m²



www.spire.co.za

TO LET



425m2 office space to rent in Rosebank. P- Grade building with a back up generator. The internal area comprises a reception area, a storage room, two large open plan offices, four boardrooms (6, 8, 12 and 20 seats), two meeting rooms, a large bar and entertainment area which leads onto a large patio, two coffee station areas, a server room, and male and female toilets. Rosebank is an ideally situated area hence infrastructure is world class, as it's within close proximity to other areas such as Sandton so it benefits largely from the world-class roadways in and around the area as well. Some prominent school in the area include Rosebank Primary School, St Teresa's School, Kingsmead College, Vuleka Primary School and Saxonwold Primary...



WEB REF: CL2849

Nadeema Chothia | 083 305 5354 | nadeemac@spire.co.za

PROPERTY | WITH PURPOSE

R78,625 per month excl. VAT

R185 per m²



www.spire.co.za

OFFICE SPACE TO RENT IN ROSEBANK



PROPERTY DETAILS

▲ Security	Yes	▲ Floor Size	425m ²
▲ Air Conditioning	Yes	▲ Zoning	Commercial

WEB REF: CL2849

Nadeema Chothia | 083 305 5354 | nadeemac@spire.co.za

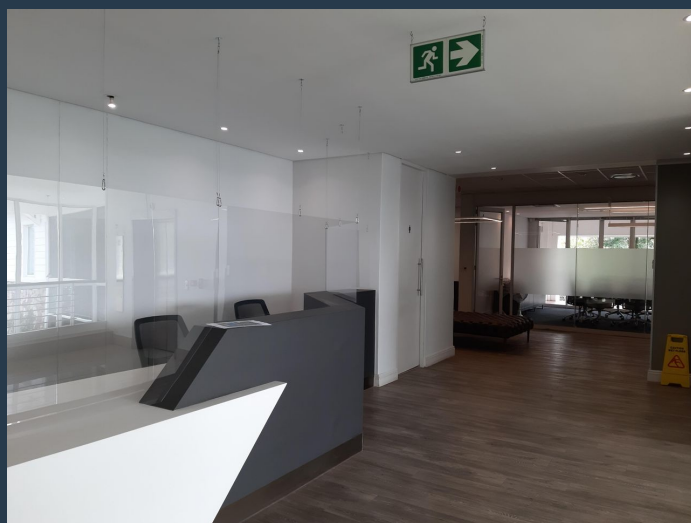
PROPERTY | WITH PURPOSE

R78,625 per month excl. VAT

R185 per m²



www.spire.co.za



CONTACT US



Nadeema Chothia

Agent

☎ (011) 2685871

📱 083 305 5354

✉ nadeemac@spire.co.za

WEB REF: CL2849

Nadeema Chothia | 083 305 5354 | nadeemac@spire.co.za