

PROPERTY | WITH PURPOSE

R137,800 per month excl. VAT

R130 per m²

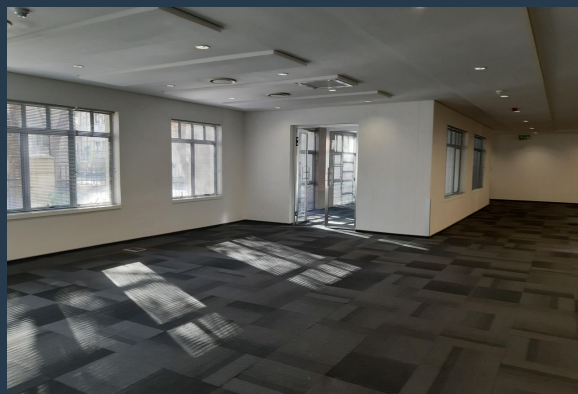


www.spire.co.za

TO LET



1060m² office space to rent in Illovo. The premise is a ground floor space with a ramp. There is a large boardroom with multiple private offices as well as an open plan area. This is fully fitted space with a kitchenette and a small balcony. Commercial Property to Rent Illovo. Illovo is a popular location within the Sandton area and has a mix of residential as well as office parks. The Commercial node is centred around Fricker Road and the area is within easy reach by road to the Sandton Central CBD, Rosebank as well as Hyde Park. Illovo has quick and easy access to surrounding highways as well as many public transport services.



WEB REF: CL3201

Nadeema Chothia | 083 305 5354 | nadeemac@spire.co.za

PROPERTY | WITH PURPOSE

R137,800 per month excl. VAT

R130 per m²



www.spire.co.za

OFFICE SPACE TO RENT IN ILLOVO



PROPERTY DETAILS

▲ Security	Yes	▲ Floor Size	1060m ²
▲ Air Conditioning	Yes	▲ Zoning	Commercial

WEB REF: CL3201

Nadeema Chothia | 083 305 5354 | nadeemac@spire.co.za

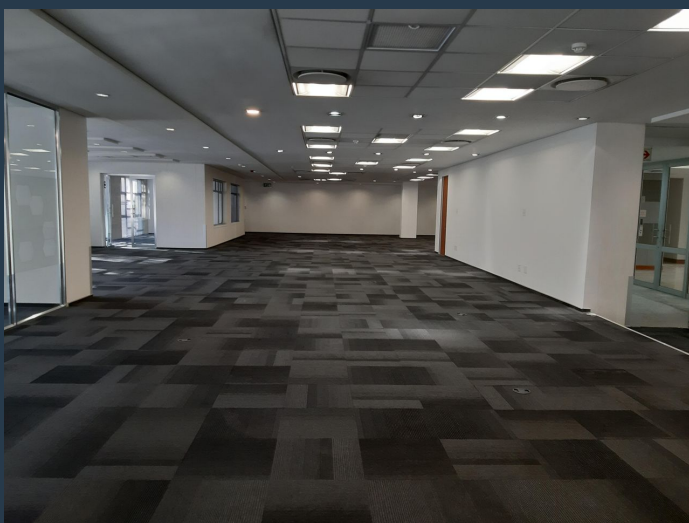
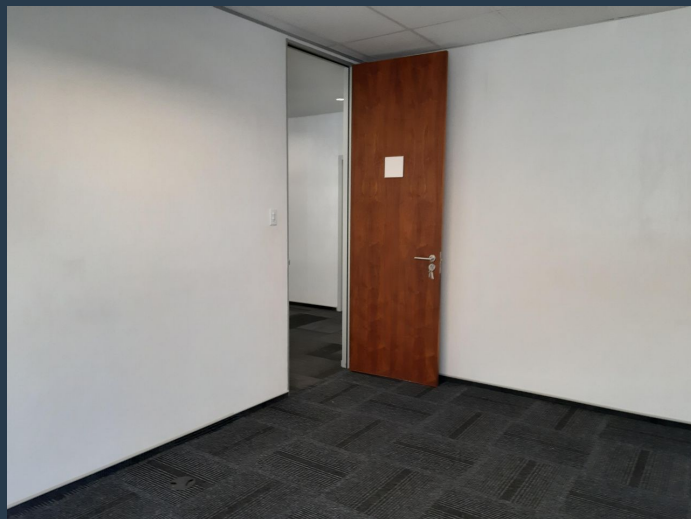
PROPERTY | WITH PURPOSE

R137,800 per month excl. VAT

R130 per m²



www.spire.co.za



CONTACT US



Nadeema Chothia

Agent

☎ (011) 2685871

📱 083 305 5354

✉ nadeemac@spire.co.za

WEB REF: CL3201

Nadeema Chothia | 083 305 5354 | nadeemac@spire.co.za