

PROPERTY | WITH PURPOSE

R37,905 per month excl. VAT

R105 per m²



www.spire.co.za

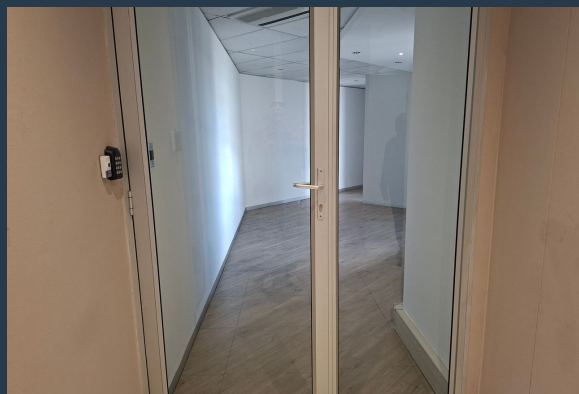
TO LET



TURNBERRY OFFICE PARK

178 Cumberland Road

360m² A Grade Office Space to Let in Turnberry Office Park Bryanston-Sandton. These move-in ready, modern, extremely well appointed, air-conditioned and fully carpeted offices with own large kitchen, dining area and outside terrace, in Turnberry Office Park, provide an extremely spacious, well-lit, and functional workspace. Large windows with views of the mature surrounding gardens allow for ample natural light. This space is located on the first floor and would suit medium to large-sized businesses or professional firms seeking a modern, attractive and upmarket space in a central location in Bryanston. Turnberry Office Park is ideally situated close to Winnie Mandela Drive (William Nicol), a major arterial route that offers quick...



WEB REF: SCL2416

Torsten Hein | +27 83 850 2809 | torstenh@spire.co.za

PROPERTY | WITH PURPOSE

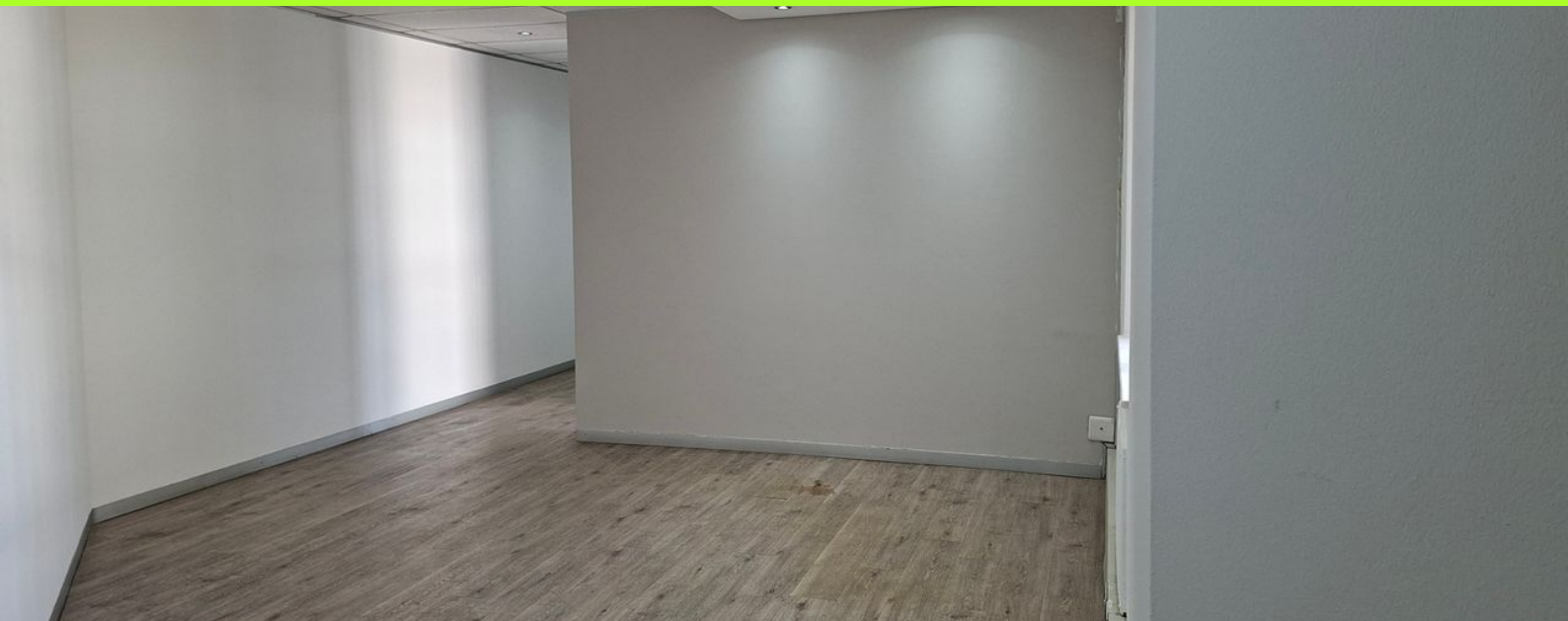
R37,905 per month excl. VAT

R105 per m²



www.spire.co.za

360M² A GRADE OFFICE SPACE TO LET IN TURNBERRY OFFICE PARK...



PROPERTY DETAILS

▲ Floor Size	360m ²
▲ Zoning	Commercial

WEB REF: SCL2416

Torsten Hein | +27 83 850 2809 | torstenh@spire.co.za

PROPERTY | WITH PURPOSE

R37,905 per month excl. VAT

R105 per m²



www.spire.co.za




CONTACT US



Torsten Hein

Agent

 (011) 2685871

 +27 83 850 2809

 torstenh@spire.co.za

WEB REF: SCL2416

Torsten Hein | +27 83 850 2809 | torstenh@spire.co.za