

PROPERTY | WITH PURPOSE

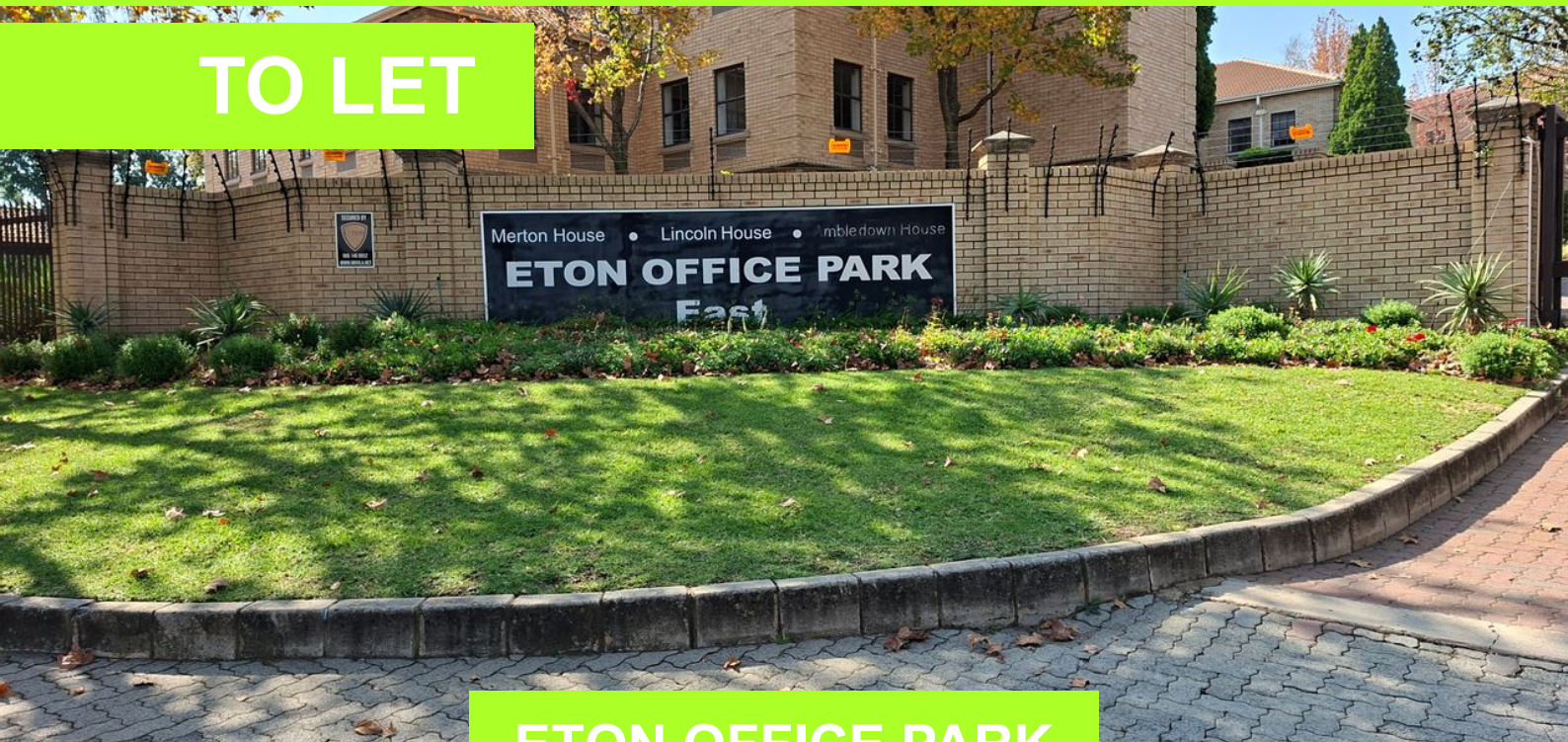
R42,525 per month excl. VAT

R105 per m²



www.spire.co.za

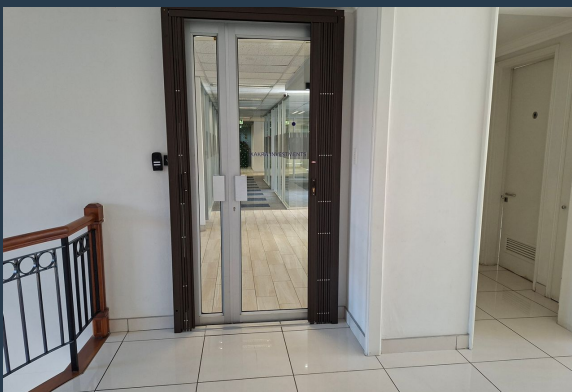
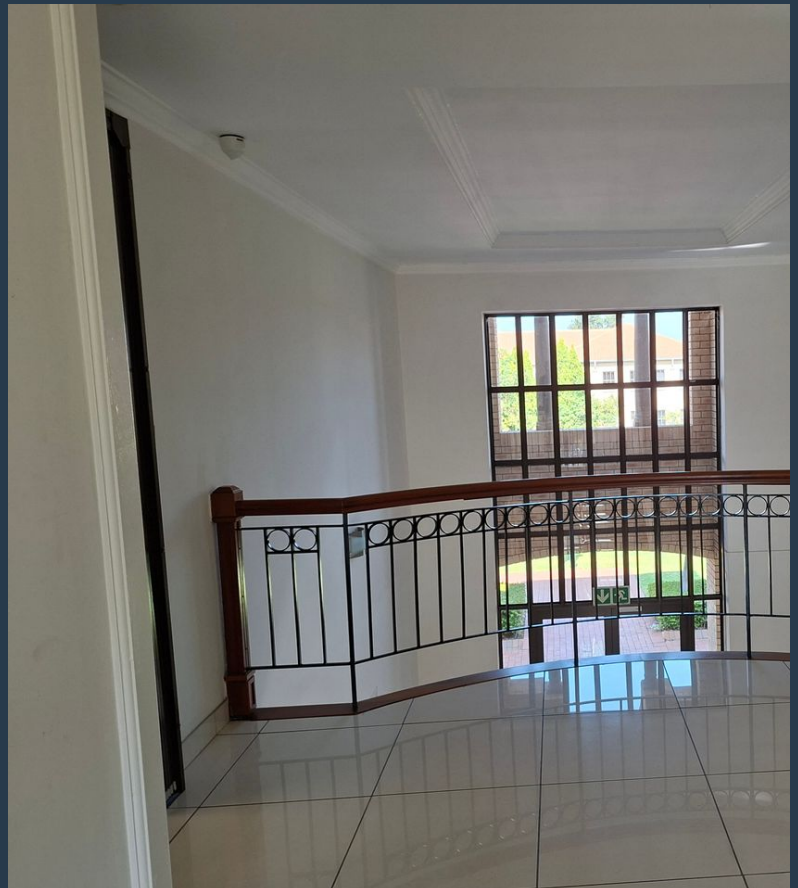
TO LET



ETON OFFICE PARK

3 Harrison Avenue

405m² A Grade Office Space to Let in Eton Office Park Bryanston -Sandton. These large modern, air-conditioned, fully carpeted and tiled offices in sought after Eton Office Park provide a spacious, well-lit, and functional workspace in a serene, attractive, landscaped environment. Large windows with views of the surrounding gardens allow for ample natural light, and an exterior balcony area contributes towards a comfortable and productive working atmosphere. This space is located on the first floor and would suit medium to large-sized businesses or professional firms seeking a modern, attractive and upmarket space in a central location in Bryanston. Eton Office Park is ideally situated close to Winnie Mandela Drive (William Nicol), a...



WEB REF: SCL2344

Torsten Hein | +27 83 850 2809 | torstenh@spire.co.za

PROPERTY | WITH PURPOSE

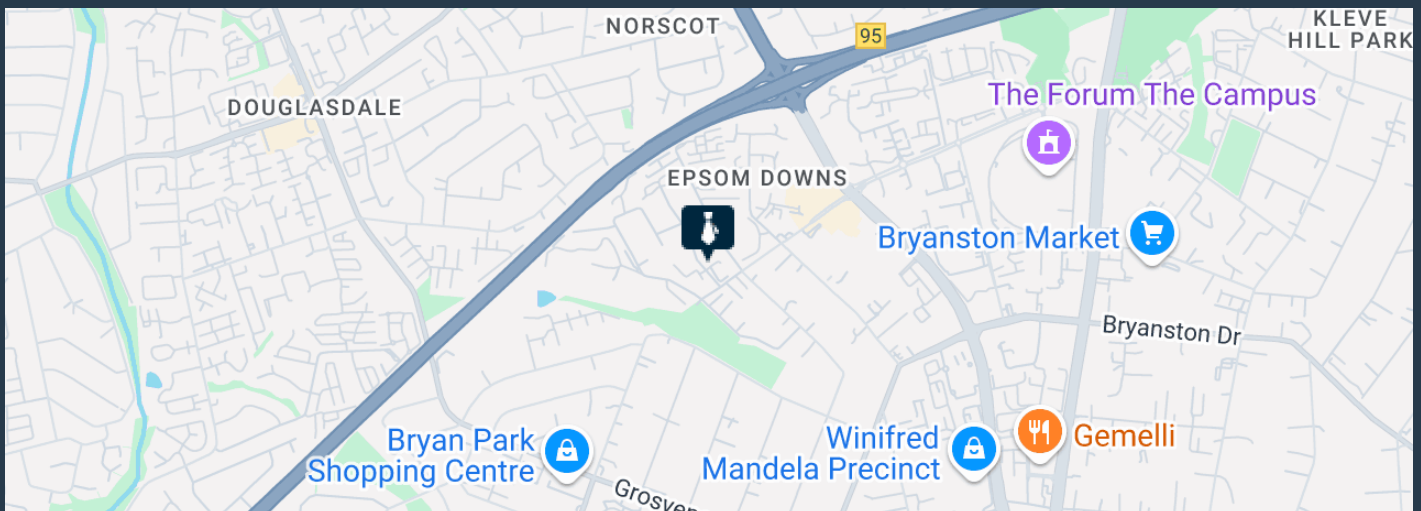
R42,525 per month excl. VAT

R105 per m²



www.spire.co.za

405M² A GRADE OFFICE SPACE TO LET IN ETON OFFICE PARK...



PROPERTY DETAILS

▲ Floor Size	405m ²
▲ Zoning	Commercial

WEB REF: SCL2344

Torsten Hein | +27 83 850 2809 | torstenh@spire.co.za

PROPERTY | WITH PURPOSE

R42,525 per month excl. VAT

R105 per m²



www.spire.co.za



CONTACT US



Torsten Hein

Agent

☎ (011) 2685871

📱 +27 83 850 2809

✉ torstenh@spire.co.za

WEB REF: SCL2344

Torsten Hein | +27 83 850 2809 | torstenh@spire.co.za