

PROPERTY | WITH PURPOSE

R50,180 per month excl. VAT

R130 per m²



www.spire.co.za

TO LET

HAMPTON OFFICE PARK

20 Georgian Crescent

386 m² Office Space to Rent in Brighton House, Hampton Office Park-Bryanston. These extremely well appointed, 386 m² first-floor offices in Hampton Office Park offer a large, well-lit and functional workspace in a secure, landscaped setting. The fully carpeted, airconditioned space features several large, open-plan sections as well as individual private offices. There are modern, communal restrooms on each floor. Large windows provide generous natural light, creating a comfortable working environment. The setup is ideal for a medium to large-sized business or professional firm looking for an attractive, well-maintained space in a central part of Bryanston. Hampton Office Park is perfectly positioned between Winnie Mandela Drive...



WEB REF: SCL2287

Torsten Hein | +27 83 850 2809 | torstenh@spire.co.za

PROPERTY | WITH PURPOSE

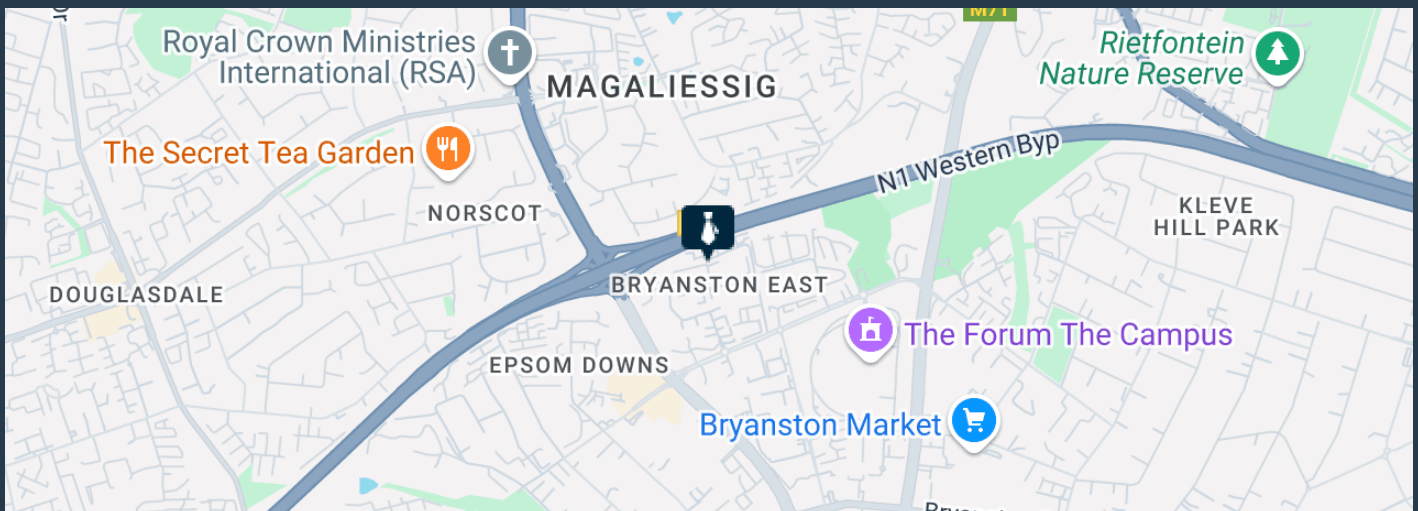
R50,180 per month excl. VAT

R130 per m²



www.spire.co.za

386 M² OFFICE SPACE TO RENT IN HAMPTON OFFICE PARK-BRYANSTON



PROPERTY DETAILS

▲ Floor Size	386m ²
▲ Zoning	Commercial

WEB REF: SCL2287

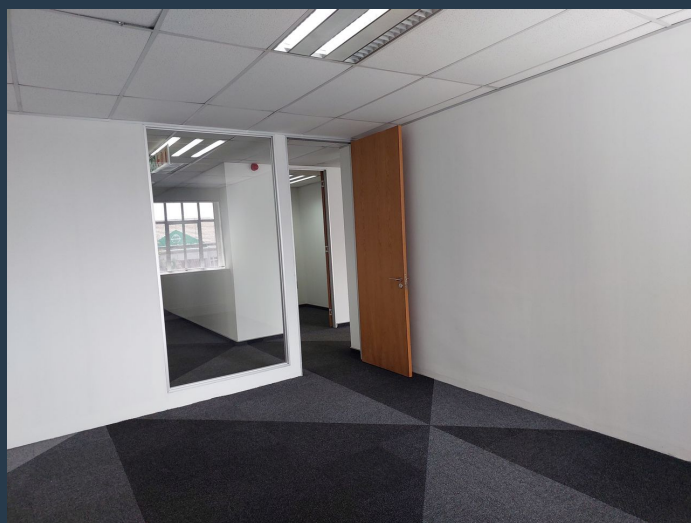
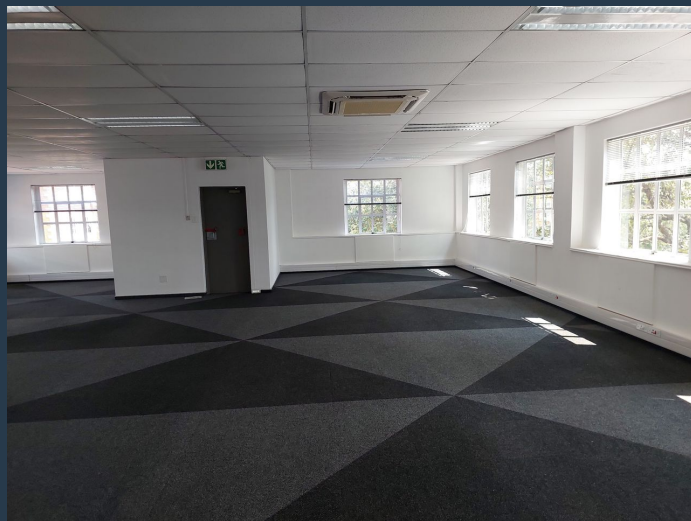
Torsten Hein | +27 83 850 2809 | torstenh@spire.co.za

PROPERTY | WITH PURPOSE

R50,180 per month excl. VAT
R130 per m²



www.spire.co.za



CONTACT US



Torsten Hein
Agent

(011) 2685871

+27 83 850 2809

torstenh@spire.co.za

WEB REF: SCL2287

Torsten Hein | +27 83 850 2809 | torstenh@spire.co.za