

PROPERTY | WITH PURPOSE

R30,728 per month excl. VAT

R125 per m²



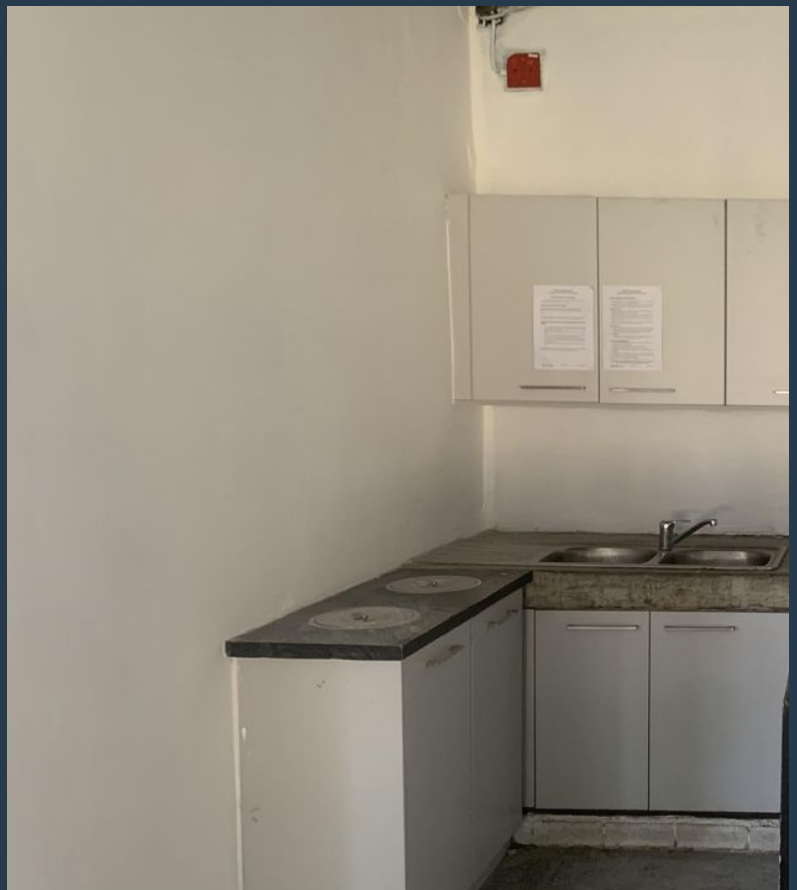
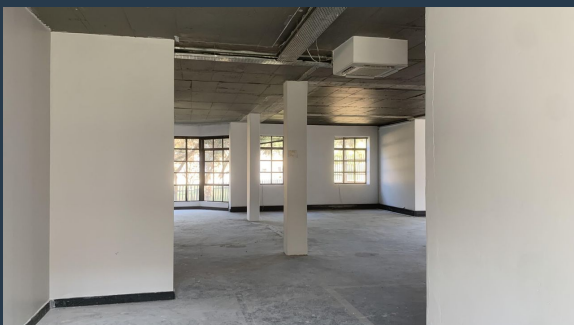
www.spire.co.za

TO LET

PETER PLACE OFFICE PARK

54 Peter Place, Peter Place Office Park

245.82m² of office space to let in Bryanston, Sandton. Peter Place Office Park is an A grade office park in the heart of Bryanston and is situated within close proximity to Randburg and Sandton. The clients in the park comprise of blue chip, multi-national and professional firms. There is also easy access to all major road links namely William Nicol Drive, Republic Road and Jan Smuts Avenue. The offices enjoy picturesque gardens and tranquil surrounds. The office is close to all sorts of locations such as St Stithians high school and primary school. There are a lot of restaurants near the office allowing you and your employees a great deal of options for a quick lunch time snack. The office comes with natural lighting following...



WEB REF: CL4054

Torsten Hein | +27 83 850 2809 | torstenh@spire.co.za

PROPERTY | WITH PURPOSE

R30,728 per month excl. VAT

R125 per m²



www.spire.co.za

VACANT OFFICE TO LET IN BRYANSTON - PETER PLACE OFFICE PARK



PROPERTY DETAILS

▲ Security	Yes	▲ Floor Size	246m ²
▲ Air Conditioning	Yes	▲ Zoning	Commercial

WEB REF: CL4054

Torsten Hein | +27 83 850 2809 | torstenh@spire.co.za

PROPERTY | WITH PURPOSE

R30,728 per month excl. VAT

R125 per m²



www.spire.co.za



CONTACT US



Torsten Hein

Agent

☎ (011) 2685871

📱 +27 83 850 2809

✉ torstenh@spire.co.za

WEB REF: CL4054

Torsten Hein | +27 83 850 2809 | torstenh@spire.co.za