

PROPERTY | WITH PURPOSE

R64,050 per month excl. VAT

R125 per m²



www.spire.co.za

TO LET

PETER PLACE OFFICE PARK

54 Peter Place, Peter Place Office Park

512.40m² of office space to let in Bryanston, Sandton. Peter Place Office Park is an A grade office park in the heart of Bryanston and is situated within close proximity to Randburg and Sandton. The clients in the park comprise of blue chip, multi-national and professional firms. There is also easy access to all major road links namely William Nicol Drive, Republic Road and Jan Smuts Avenue. The offices enjoy picturesque gardens and tranquil surrounds. This stunning office offers you everything you need to get your business going from the start. It comes fully fitted with multiple offices, boardrooms, a wet kitchen and plenty of open space. The office is close to all sorts of locations such as St Stithians high school and primary...



WEB REF: CL4050

Torsten Hein | +27 83 850 2809 | torstenh@spire.co.za

PROPERTY | WITH PURPOSE

R64,050 per month excl. VAT

R125 per m²



www.spire.co.za

FITTED VACANT OFFICE TO LET IN BRYANSTON - PETER PLACE OFFICE PARK



PROPERTY DETAILS

▲ Security	Yes	▲ Floor Size	512m ²
▲ Air Conditioning	Yes	▲ Zoning	Commercial

WEB REF: CL4050

Torsten Hein | +27 83 850 2809 | torstenh@spire.co.za

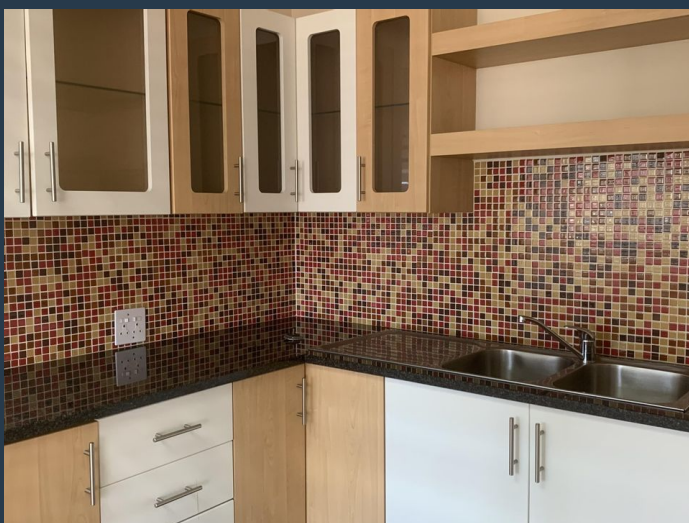
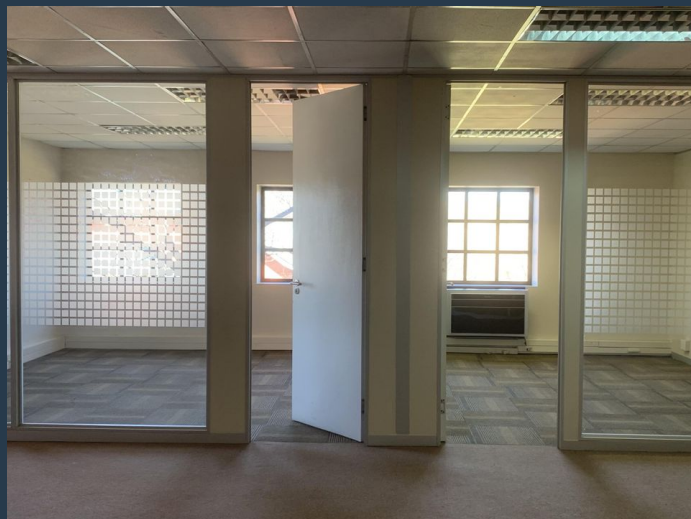
PROPERTY | WITH PURPOSE

R64,050 per month excl. VAT

R125 per m²



www.spire.co.za



CONTACT US



Torsten Hein

Agent

☎ (011) 2685871

📱 +27 83 850 2809

✉ torstenh@spire.co.za

WEB REF: CL4050

Torsten Hein | +27 83 850 2809 | torstenh@spire.co.za