

PROPERTY | WITH PURPOSE

**R45,815** per month excl. VAT

**R119** per m<sup>2</sup>

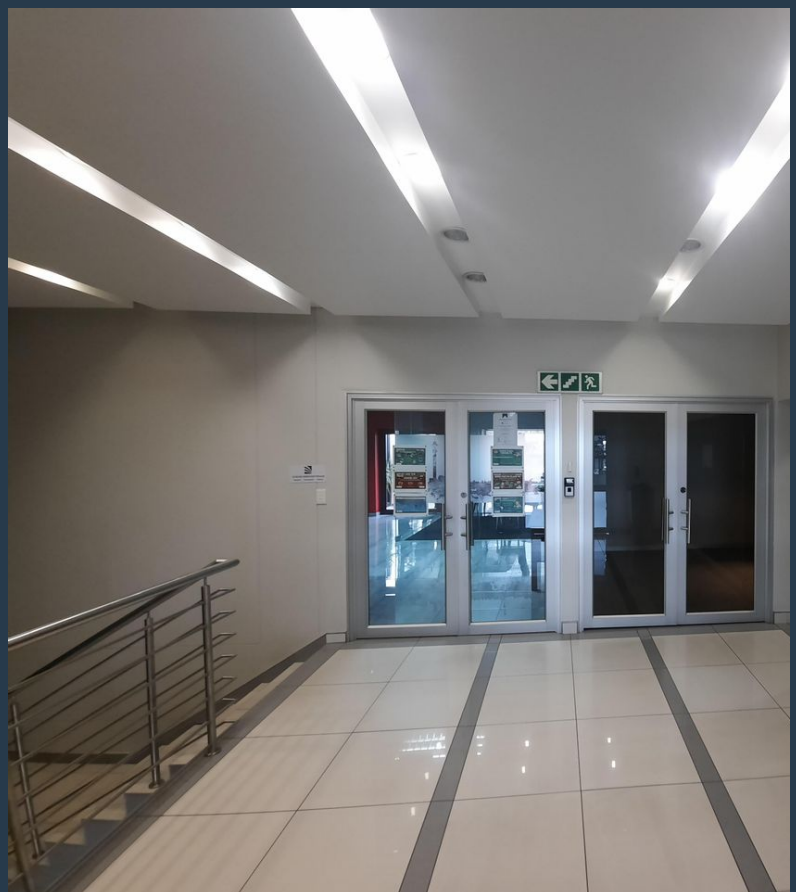


[www.spire.co.za](http://www.spire.co.za)

**TO LET**



385 sqm Office space available immediately to rent. Clearwater Office Park has the distinction of being one of the first A-Grade office parks on the East Rand. Through its clever design and creative landscaping, it remains relevant and ready to support successful business operations. The Office park offers commercial office space in the Allens Nek, Clear Water area offers great value office space, covered and basement parking facilities available. The offices range from 150sqm to a few thousand square meters. The Office park is situated Right opposite The Clearwater Mall, just off Hendrik Potgieter. Our team of property professionals are ready to find your perfect space. We have a longstanding relationship with the top property...



**WEB REF: CL2431**

**Kate Shimwell | 082 493 0273 | [kates@spire.co.za](mailto:kates@spire.co.za)**

PROPERTY | WITH PURPOSE

**R45,815** per month excl. VAT

R119 per m<sup>2</sup>



[www.spire.co.za](http://www.spire.co.za)

## OFFICE SPACE TO RENT STRUBENSVALLEY | CLEARWATER OFFICE PARK



### PROPERTY DETAILS

▲ Security	Yes	▲ Open Parking	4.0	▲ Floor Size	385m <sup>2</sup>
▲ Air Conditioning	Yes	▲ Covered Parking	4.0	▲ Zoning	Commercial
		▲ Basement Parking	4.0		

WEB REF: CL2431

Kate Shimwell | 082 493 0273 | [kates@spire.co.za](mailto:kates@spire.co.za)



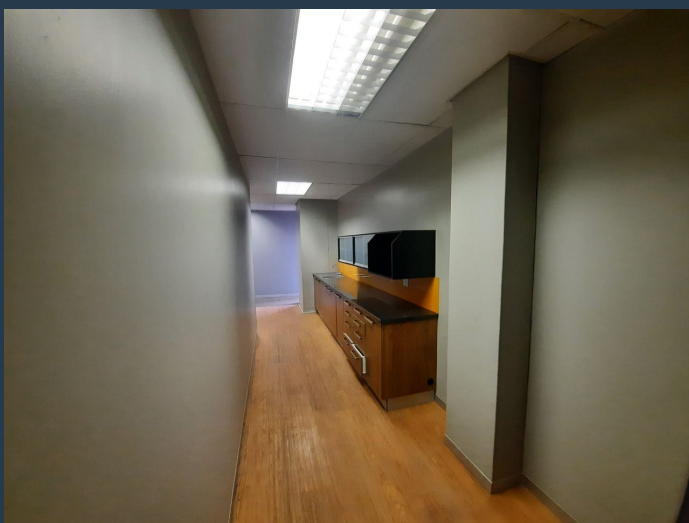
PROPERTY | WITH PURPOSE

**R45,815** per month excl. VAT

R119 per m<sup>2</sup>



[www.spire.co.za](http://www.spire.co.za)



## CONTACT US



**Kate Shimwell**  
Agent

☎ (011) 2685871  
📱 082 493 0273  
✉ [kates@spire.co.za](mailto:kates@spire.co.za)



**Kate Shimwell**  
Agent

☎ (011) 2685871  
📱 082 493 0273  
✉ [kates@spire.co.za](mailto:kates@spire.co.za)