

PROPERTY | WITH PURPOSE

R49,329 per month excl. VAT

R203 per m²



www.spire.co.za

TO LET

RIVERWALK OFFICE PARK

51 Matroosberg road

243 sqm Office space to rent in Ashley Gardens. Beautiful office space located on the Ground floor. Riverwalk Office Park has full access control with security in place. There is also a backup generator in place. Tenants can lease secure parking bays in the park. This exclusive office park has the most amazing gardens, with beautiful views of the Menlyn area. Situated very close to the highway, and Menlyn Park shopping centre. We have been helping businesses just like yours to find their perfect commercial retail or industrial space. Our team of property professionals are ready to find your perfect space. We have a longstanding relationship with the top property funds and property management companies in the city. We feature properties...



WEB REF: CL2707

Nadeema Chothia | 083 305 5354 | nadeemac@spire.co.za

PROPERTY | WITH PURPOSE

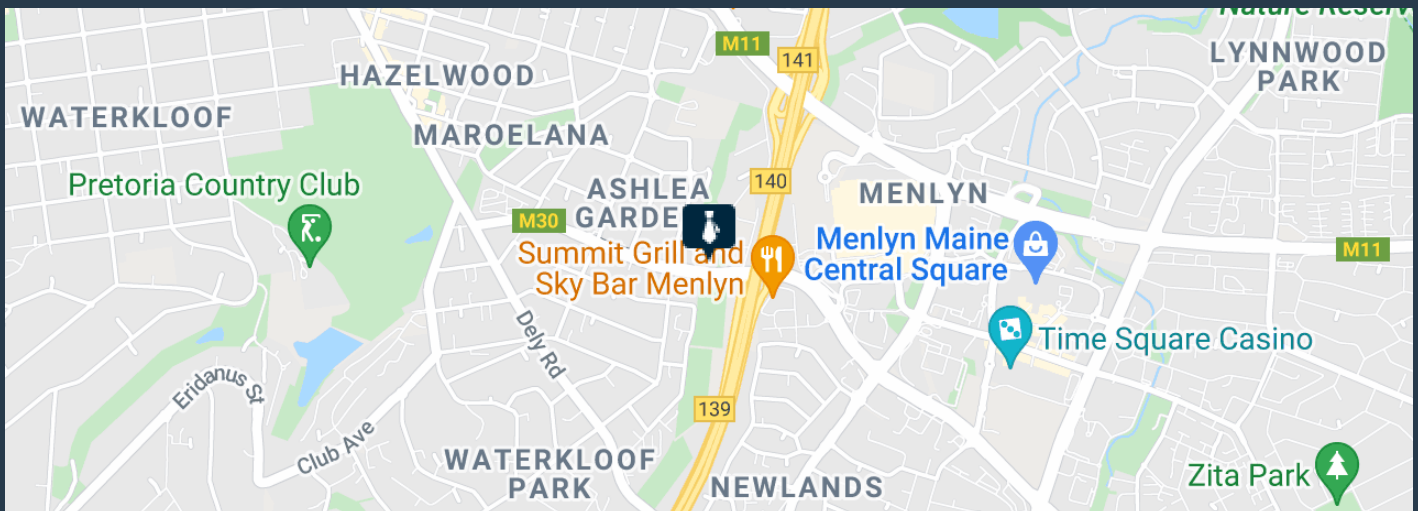
R49,329 per month excl. VAT

R203 per m²



www.spire.co.za

R203 PER SQM | 243SQM OFFICE TO LET IN ASHLEY GARDENS



PROPERTY DETAILS

▲ Floor Size	243m ²
▲ Zoning	Commercial

WEB REF: CL2707

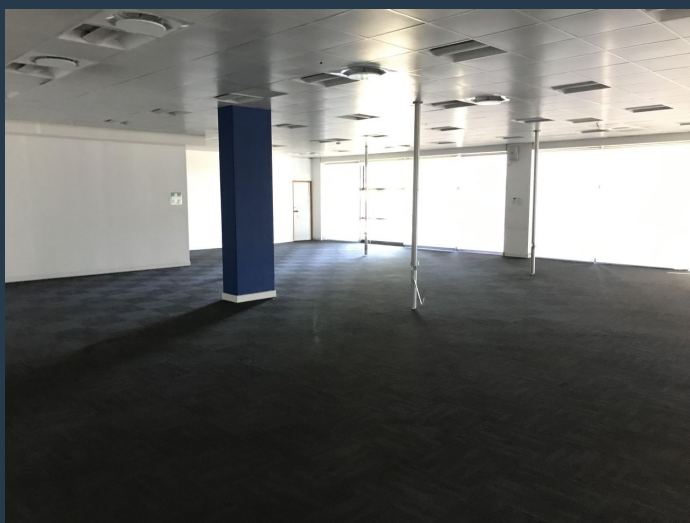
Nadeema Chothia | 083 305 5354 | nadeemac@spire.co.za

PROPERTY | WITH PURPOSE

R49,329 per month excl. VAT
R203 per m²



www.spire.co.za



CONTACT US



Nadeema Chothia
Agent

☎ (011) 2685871

📱 083 305 5354

✉ nadeemac@spire.co.za

WEB REF: CL2707

Nadeema Chothia | 083 305 5354 | nadeemac@spire.co.za