

PROPERTY | WITH PURPOSE

R173,760 per month excl. VAT

R160 per m²

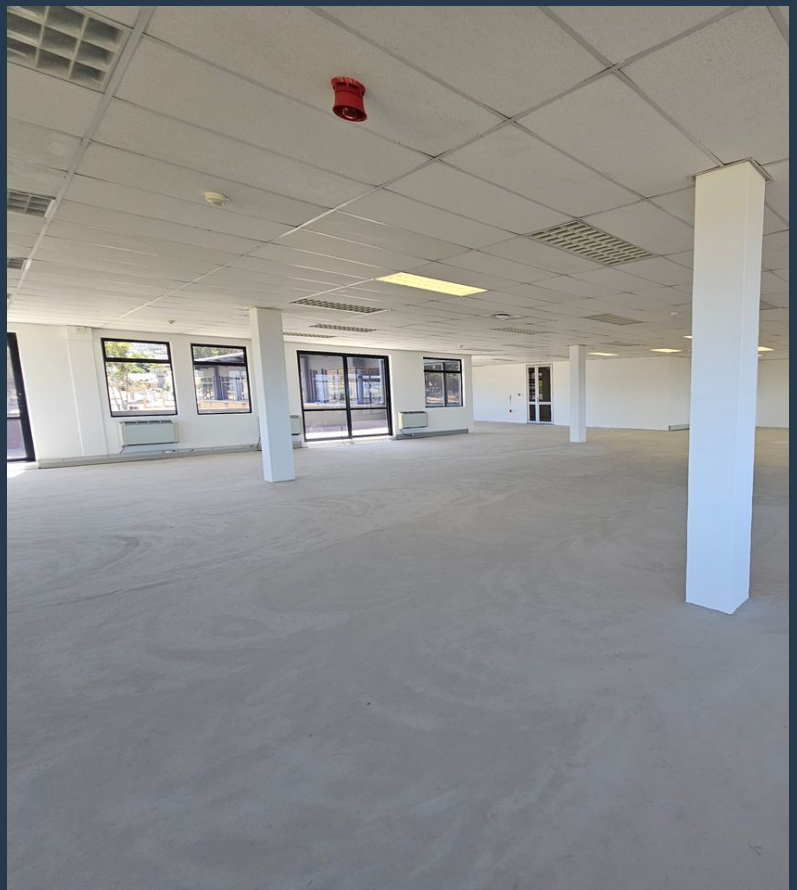


www.spire.co.za

TO LET



1,086 m² Office to rent at Plattekloof Office Park. Situated on the second floor of a secure, well-maintained building, this white-boxed space is ready for a full tenant fit-out, with a generous allowance provided to create a workspace tailored to your business needs. This office has a 63 m² open balcony. This office is a blank canvas, ideal for businesses looking to design an environment that reflects their unique operational and cultural requirements. Plattekloof Office Park is a gated business park with 24-hour security, full access control, and a robust surveillance system, ensuring a safe working environment for all tenants. The property offers generous on-site parking facilities for tenants and visitors, making it a convenient choice...



WEB REF: CL2219

Kevin Hellyer | 061 484 5578 | kevinh@spire.co.za

PROPERTY | WITH PURPOSE

R173,760 per month excl. VAT

R160 per m²



www.spire.co.za

1,086 M² OFFICE SPACE TO RENT PLATTEKLOOF OFFICE PARK



PROPERTY DETAILS

▲ Security	Yes	▲ Open Parking	7.0	▲ Floor Size	1086m ²
▲ Air Conditioning	Yes	▲ Covered Parking	1.0	▲ Land Size	1086
				▲ Zoning	Commercial

WEB REF: CL2219

Kevin Hellyer | 061 484 5578 | kevinh@spire.co.za

PROPERTY | WITH PURPOSE

R173,760 per month excl. VAT

R160 per m²



www.spire.co.za



CONTACT US



Kevin Hellyer

Candidate Property Practitioner

☎ (021) 6854020

📱 061 484 5578

✉ kevinh@spire.co.za

WEB REF: CL2219

Kevin Hellyer | 061 484 5578 | kevinh@spire.co.za