

PROPERTY | WITH PURPOSE

**R238,720** per month excl. VAT

**R160** per m<sup>2</sup>

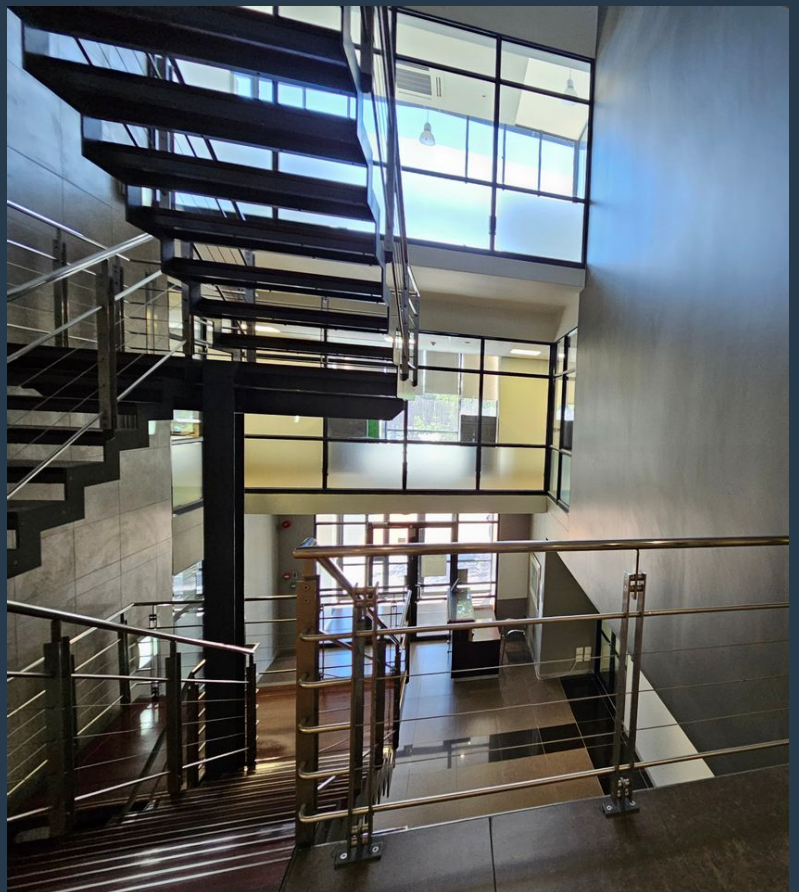
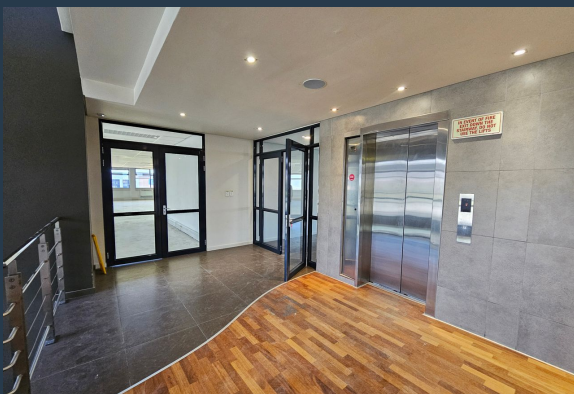


[www.spire.co.za](http://www.spire.co.za)

**TO LET**



1,492 m<sup>2</sup> Office to rent in Platteklouf. Nestled in the popular Platteklouf Office Park, this large 1,492 m<sup>2</sup> office space offers a great opportunity for businesses looking for premium, customizable office space in Cape Town's northern suburbs. Situated on the second floor of a secure, well-maintained building, this white-boxed space is ready for a full tenant fit-out, with a generous allowance provided to create a workspace tailored to your business needs. The 1,492 m<sup>2</sup> office is a blank canvas, ideal for businesses looking to design an environment that reflects their unique operational and cultural requirements. A standout feature of this office is the large balcony, offering sweeping views of the surrounding area and providing an excellent...



**WEB REF: CL2129**

**Kevin Hellyer | 061 484 5578 | [kevinh@spire.co.za](mailto:kevinh@spire.co.za)**



PROPERTY | WITH PURPOSE

**R238,720** per month excl. VAT

R160 per m<sup>2</sup>



[www.spire.co.za](http://www.spire.co.za)

## 1,492 M<sup>2</sup> OFFICE SPACE TO RENT PLATTEKLOOF OFFICE PARK



### PROPERTY DETAILS

▲ Security	Yes	▲ Open Parking	20.0	▲ Floor Size	1492m <sup>2</sup>
▲ Air Conditioning	Yes	▲ Basement Parking	20.0	▲ Land Size	1492
				▲ Zoning	Commercial

WEB REF: CL2129

Kevin Hellyer | 061 484 5578 | [kevinh@spire.co.za](mailto:kevinh@spire.co.za)

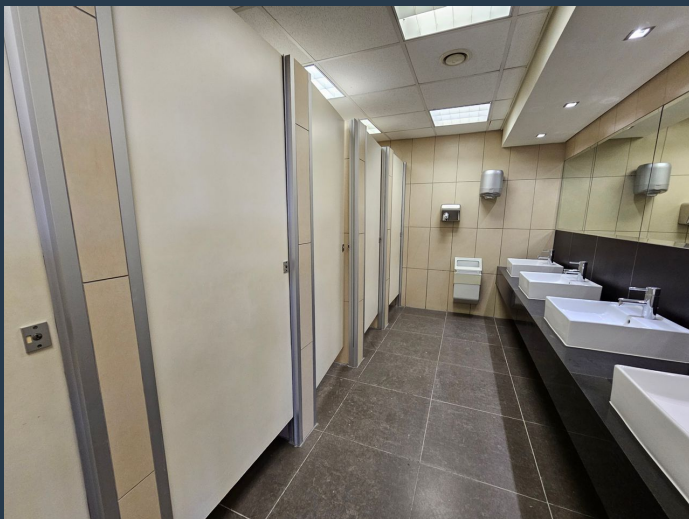
PROPERTY | WITH PURPOSE

**R238,720** per month excl. VAT

R160 per m<sup>2</sup>



[www.spire.co.za](http://www.spire.co.za)



## CONTACT US



**Kevin Hellyer**

Candidate Property Practitioner

☎ (021) 6854020

📱 061 484 5578

✉ [kevinh@spire.co.za](mailto:kevinh@spire.co.za)

WEB REF: CL2129

Kevin Hellyer | 061 484 5578 | [kevinh@spire.co.za](mailto:kevinh@spire.co.za)