

PROPERTY | WITH PURPOSE

R32,550 per month excl. VAT

R105 per m²



www.spire.co.za

TO LET



310 m² Office to rent in Montague Gardens. This neat office is split over two floors and features partitioned offices, a fully equipped kitchen, and modern bathrooms. The premises offer high-speed internet services, making it an ideal location for businesses that require reliable connectivity. The office park is strategically situated adjacent to main public transport routes, ensuring easy accessibility for both employees and clients. Additionally, Arden Grove Office Park provides excellent security with full access control, ensuring a safe and secure working environment. Montague Gardens is a prime commercial and industrial hub located in Cape Town's Northern Suburbs. It is renowned for its strategic location, offering businesses...



WEB REF: SCL1947

Logan Du Pessis | 0736449934 | logand@spire.co.za

PROPERTY | WITH PURPOSE

R32,550 per month excl. VAT

R105 per m²



www.spire.co.za

310 M² OFFICE TO RENT IN MONTAGUE GARDENS | ARDEN GROVE OFFICE PARK



PROPERTY DETAILS

▲ Security	Yes	▲ Basement Parking	10.0	▲ Floor Size	310m ²
▲ Air Conditioning	Yes			▲ Land Size	310
				▲ Zoning	Commercial

WEB REF: SCL1947

Logan Du Pessis | 0736449934 | logand@spire.co.za

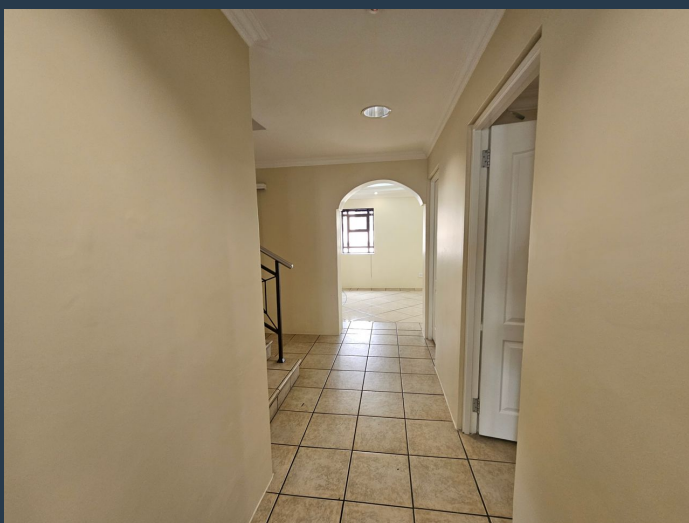
PROPERTY | WITH PURPOSE

R32,550 per month excl. VAT

R105 per m²



www.spire.co.za



CONTACT US



Logan Du Pessis
Agent

📞 (021) 6854020

📱 0736449934

✉️ logand@spire.co.za



Kevin Hellyer
Candidate Property Practitioner

📞 (021) 6854020

📱 061 484 5578

✉️ kevinh@spire.co.za

WEB REF: SCL1947

Logan Du Pessis | 0736449934 | logand@spire.co.za