

PROPERTY | WITH PURPOSE

R21,000 per month excl. VAT
R105 per m²

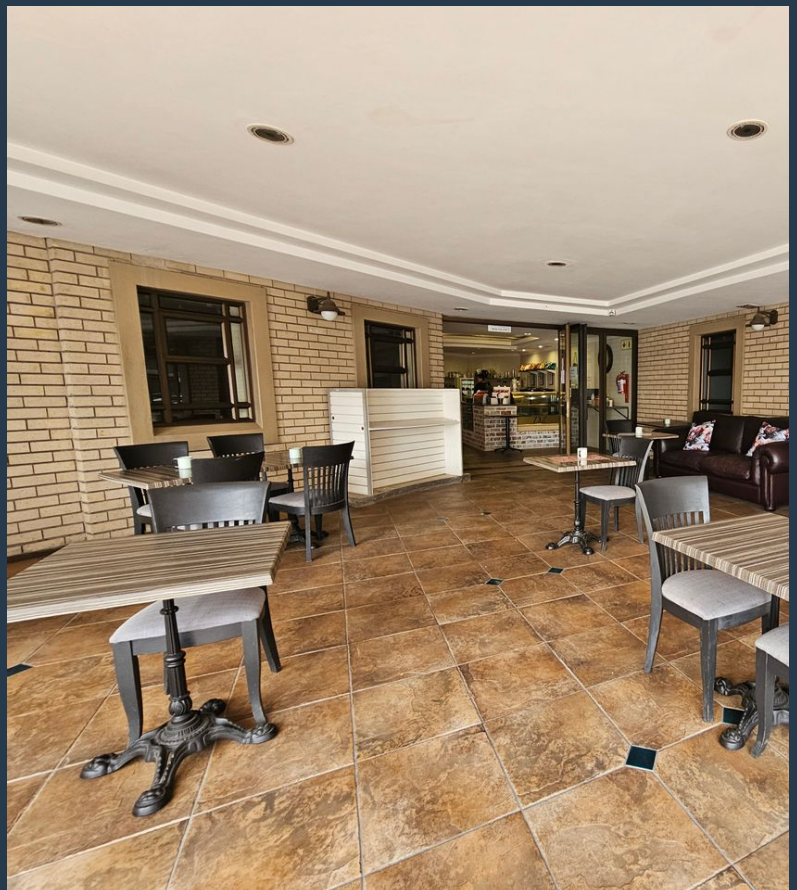


www.spire.co.za

TO LET



200 m² Office to Rent in Montague Gardens. This neat office is split over two floors and features partitioned offices, a fully equipped kitchen, and modern bathrooms. The premises offer high-speed internet services, making it an ideal location for businesses that require reliable connectivity. The office park is strategically situated adjacent to main public transport routes, ensuring easy accessibility for both employees and clients. Additionally, Arden Grove Office Park provides excellent security with full access control, ensuring a safe and secure working environment. Montague Gardens is a prime commercial and industrial hub located in Cape Town's Northern Suburbs. It is renowned for its strategic location, offering businesses...



WEB REF: SCL1943

Logan Du Pessis | 0736449934 | logand@spire.co.za

PROPERTY | WITH PURPOSE

R21,000 per month excl. VAT

R105 per m²



www.spire.co.za

200 M² OFFICE TO RENT IN MONTAGUE GARDENS | ARDEN GROVE OFFICE PARK



PROPERTY DETAILS

▲ Security	Yes	▲ Basement Parking	8.0	▲ Floor Size	200m ²
▲ Air Conditioning	Yes			▲ Land Size	200
				▲ Zoning	Commercial

WEB REF: SCL1943

Logan Du Pessis | 0736449934 | logand@spire.co.za

PROPERTY | WITH PURPOSE

R21,000 per month excl. VAT
R105 per m²



www.spire.co.za



CONTACT US



Logan Du Pessis
Agent

☎ (021) 6854020
📱 0736449934
✉ logand@spire.co.za



Kevin Hellyer
Candidate Property Practitioner

☎ (021) 6854020
📱 061 484 5578
✉ kevinh@spire.co.za