

PROPERTY | WITH PURPOSE

R54,720 per month excl. VAT

R160 per m²

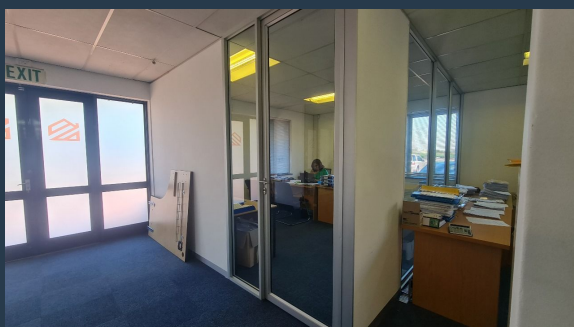


www.spire.co.za

TO LET



342 m² Office to rent on the ground floor in Century City. Fully fitted space in a secure building. This building boasts excellent visibility, with prime exposure onto the N1, making it an ideal location for businesses that prioritize brand visibility. The building is equipped with a backup generator, ensuring uninterrupted operations during power outages. In addition, the landlord is currently installing solar power, further enhancing the building's sustainability and reducing its environmental impact. Secure parking bays are available, providing convenience and safety for both employees and visitors. A-Grade office space at 9 Boundary Road offers a premium work environment for businesses looking to elevate their operations. This modern,...



WEB REF: SCL2067

Kevin Hellyer | 061 484 5578 | kevinh@spire.co.za

PROPERTY | WITH PURPOSE

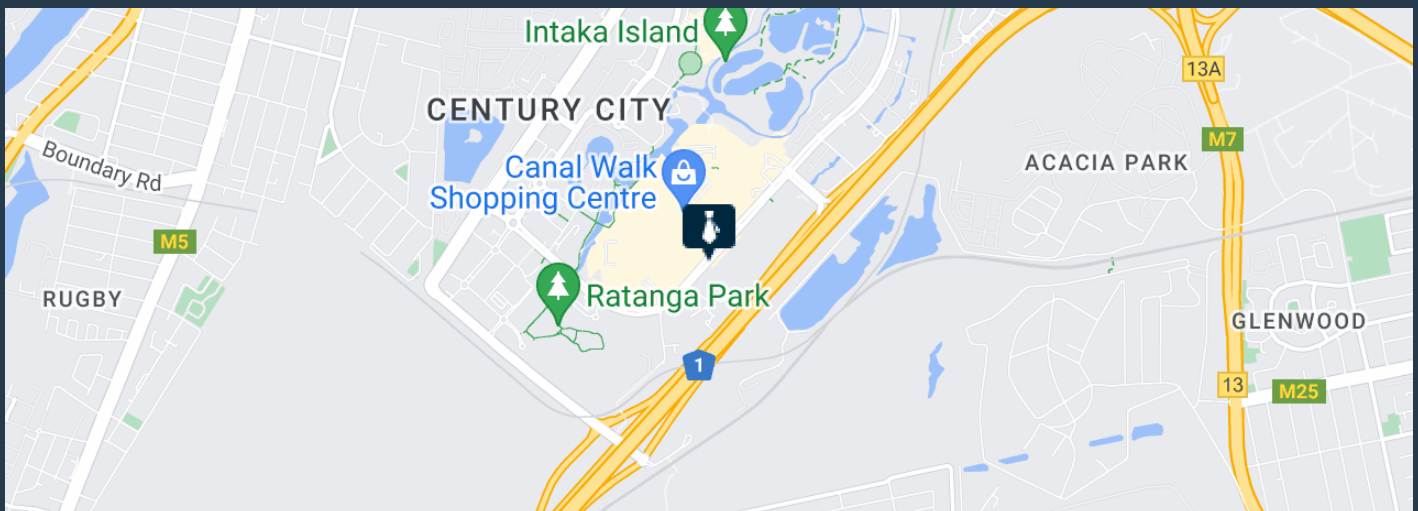
R54,720 per month excl. VAT

R160 per m²



www.spire.co.za

OFFICE SPACE TOP RENT IN CENTURY CITY



PROPERTY DETAILS

▲ Security	Yes	▲ Floor Size	342m ²
▲ Air Conditioning	Yes	▲ Land Size	342
		▲ Zoning	Commercial

WEB REF: SCL2067

Kevin Hellyer | 061 484 5578 | kevinh@spire.co.za

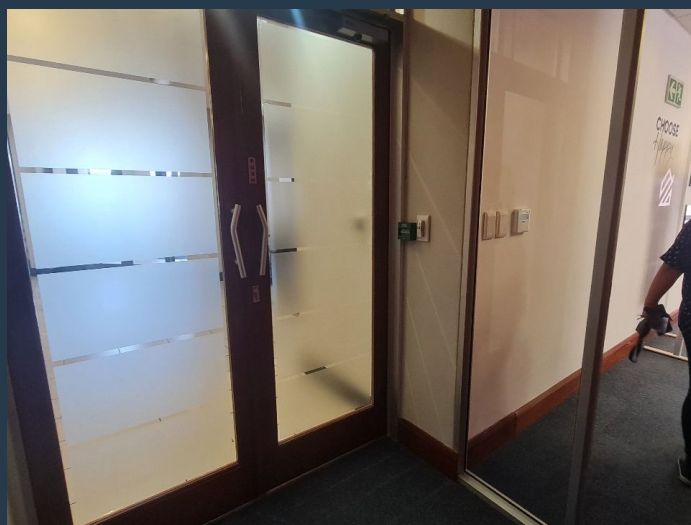
PROPERTY | WITH PURPOSE

R54,720 per month excl. VAT

R160 per m²



www.spire.co.za



CONTACT US



Kevin Hellyer

Candidate Property Practitioner

☎ (021) 6854020

📱 061 484 5578

✉ kevinh@spire.co.za

WEB REF: SCL2067

Kevin Hellyer | 061 484 5578 | kevinh@spire.co.za