

PROPERTY | WITH PURPOSE

R290,880 per month excl. VAT

R160 per m²

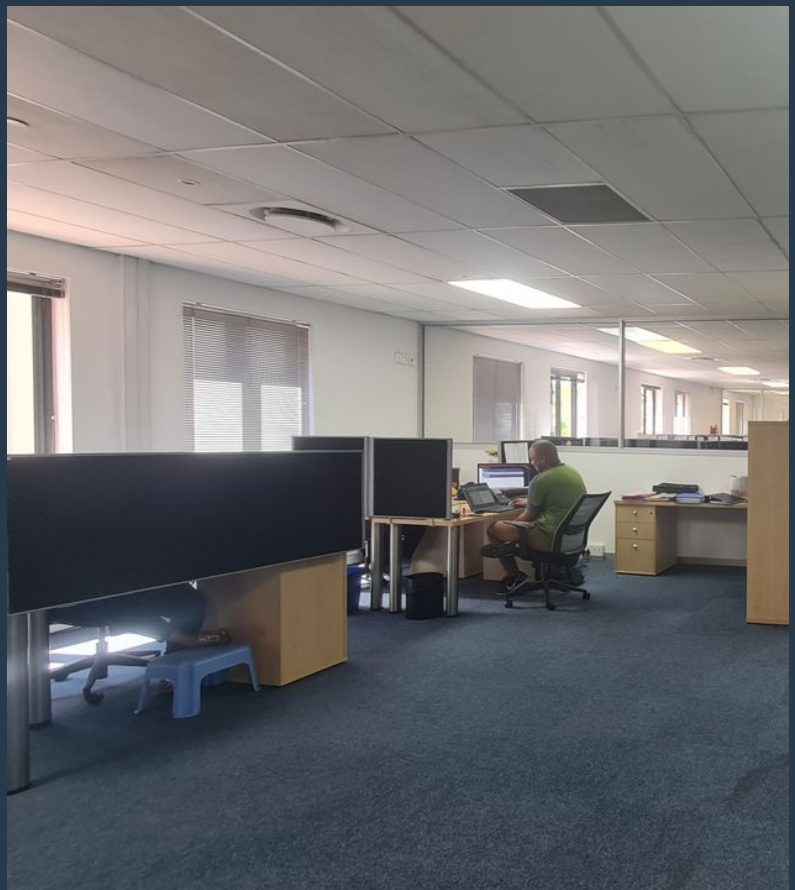
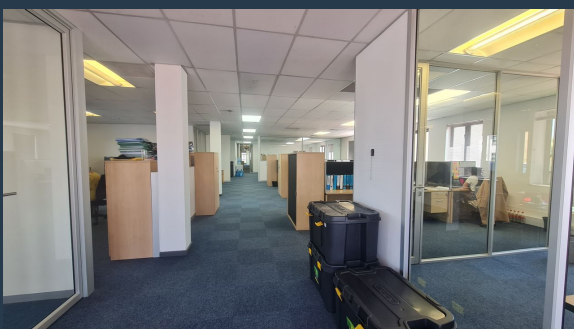


www.spire.co.za

TO LET



Full free standing building to rent in Century City. Fitted out offices with expansive views over Century City. The building has signage potential with exposure onto the N1, backup generator power and the Landlord is currently installing Solar power. A total 89 parking bays are available. Inviting and professional foyer with reception desk and seating area. The First floor offers large boardroom, glass partitioned offices, large open plan offices, kitchenette, ablutions with shower facility. Fully Air-conditioning with an abundance of natural light. An additional feature of the building is a fully functional canteen and entertainment/staff pause area with stunning views over the canal, with seating area canal access. Can be subdivided into...



WEB REF: SCL1234

Kevin Hellyer | 061 484 5578 | kevinh@spire.co.za

PROPERTY | WITH PURPOSE

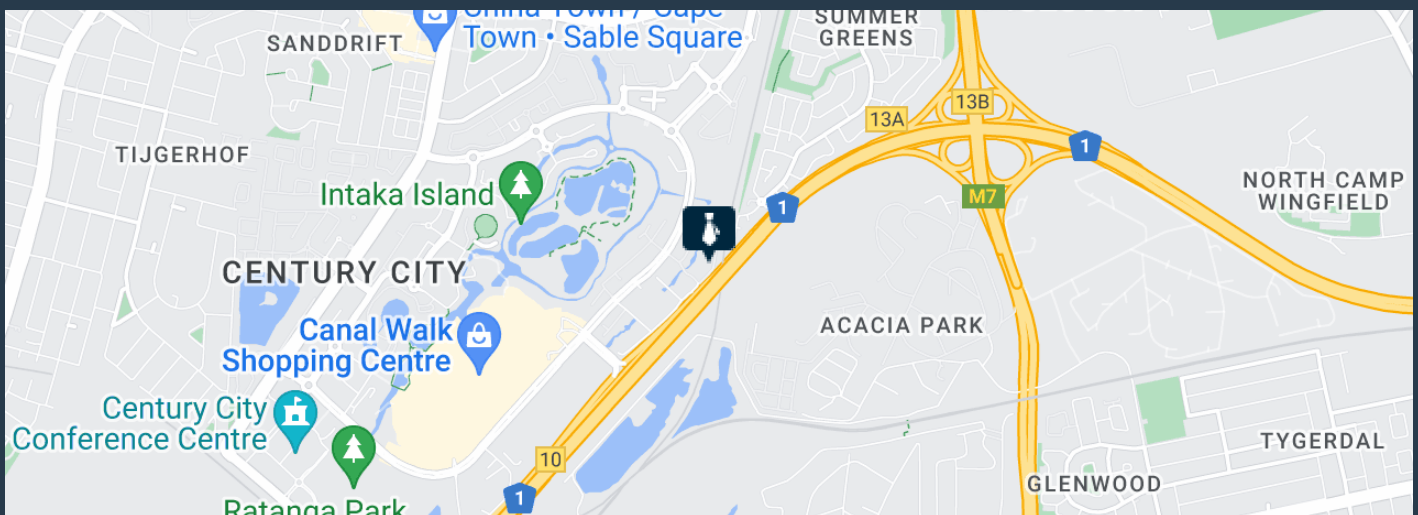
R290,880 per month excl. VAT

R160 per m²



www.spire.co.za

1,818 M² OFFICE SPACE TO RENT CENTURY CITY I BOUNDARY ROAD



PROPERTY DETAILS

▲ Security	Yes	▲ Floor Size	1818m ²
▲ Air Conditioning	Yes	▲ Land Size	1818
		▲ Zoning	Commercial

WEB REF: SCL1234

Kevin Hellyer | 061 484 5578 | kevinh@spire.co.za

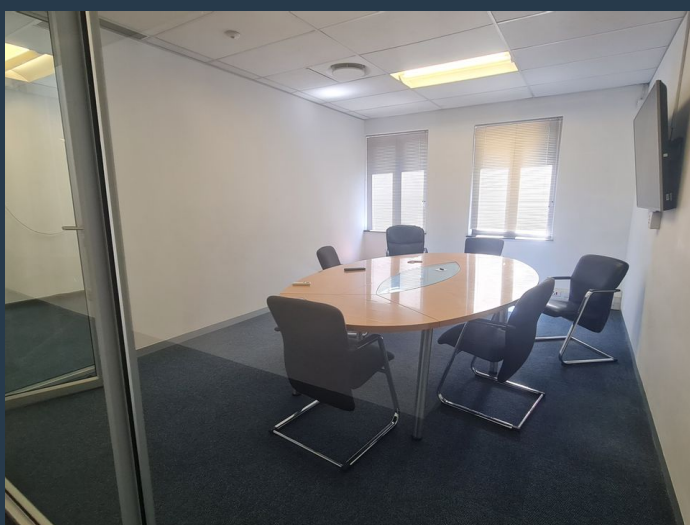
PROPERTY | WITH PURPOSE

R290,880 per month excl. VAT

R160 per m²



www.spire.co.za



CONTACT US



Kevin Hellyer

Candidate Property Practitioner

☎ (021) 6854020

📱 061 484 5578

✉ kevinh@spire.co.za

WEB REF: SCL1234

Kevin Hellyer | 061 484 5578 | kevinh@spire.co.za