

PROPERTY | WITH PURPOSE

R102,150 per month excl. VAT

R225 per m²

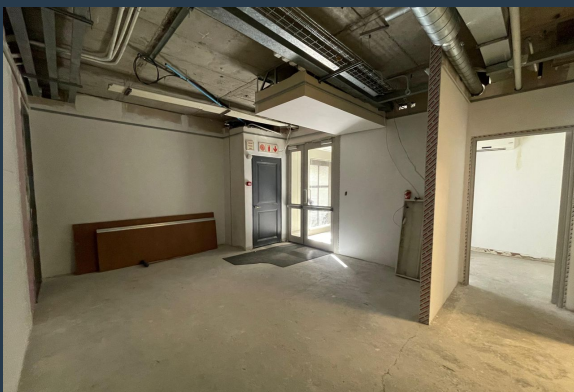


www.spire.co.za

TO LET



454 m² Office space to rent in Century City. Back up power available in the building. Partially fitted out space located on the ground floor at Waterford Place. Neat office with a reception area, meeting room and open plan work space. The office has a full kitchen as well as access to an exclusive use balcony and patio. The layout is practical and allows for flexible tenant configurations to suit different business requirements. Each floor, including the basement, is serviced by a glass lift. Tenants have access to exclusive-use balconies and terrace areas, which create a comfortable working environment and additional breakout space. Waterford House is equipped with CCTV security systems and full backup power, with a generator that...



WEB REF: SCL49

Kevin Hellyer | 061 484 5578 | kevinh@spire.co.za

PROPERTY | WITH PURPOSE

R102,150 per month excl. VAT

R225 per m²



www.spire.co.za

454 M² OFFICE SPACE TO RENT CENTURY CITY | WATERFORD HOUSE



PROPERTY DETAILS

▲ Basement Parking	12.0	▲ Floor Size	454m ²
		▲ Land Size	454
		▲ Zoning	Commercial

WEB REF: SCL49

Kevin Hellyer | 061 484 5578 | kevinh@spire.co.za

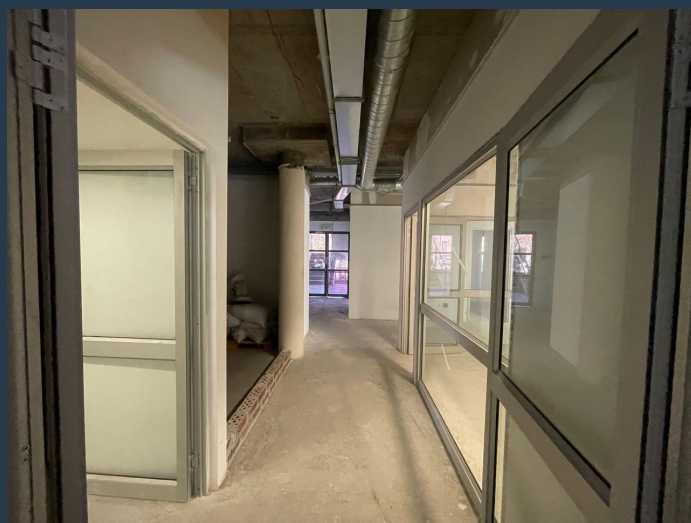
PROPERTY | WITH PURPOSE

R102,150 per month excl. VAT

R225 per m²



www.spire.co.za



CONTACT US



Kevin Hellyer

Candidate Property Practitioner

☎ (021) 6854020

📱 061 484 5578

✉ kevinh@spire.co.za

WEB REF: SCL49

Kevin Hellyer | 061 484 5578 | kevinh@spire.co.za