

PROPERTY | WITH PURPOSE

**R47,160** per month excl. VAT

**R180** per m<sup>2</sup>

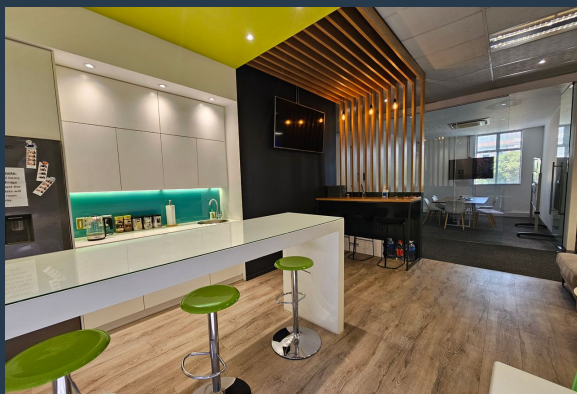


[www.spire.co.za](http://www.spire.co.za)

**TO LET**



262 m<sup>2</sup> Office to rent on the ground floor at Centennial Place in Century City. This well-maintained commercial building offers a contemporary working environment with excellent amenities, high-end finishes, and a prime location that caters to businesses of all sizes. This office has an existing fit-out with a mostly open plan layout, full kitchen and staff area. There is lift access to all floors. Centennial Place has full access control as well as 24 hour security. Centennial Place is strategically positioned in Century City, offering seamless access to the N1 highway and major transport routes. The area is well-served by public transport, including MyCiTi bus routes, ensuring easy commuting for employees and clients. Century City is...



WEB REF: CL1592

Kevin Hellyer | 061 484 5578 | [kevinh@spire.co.za](mailto:kevinh@spire.co.za)



PROPERTY | WITH PURPOSE

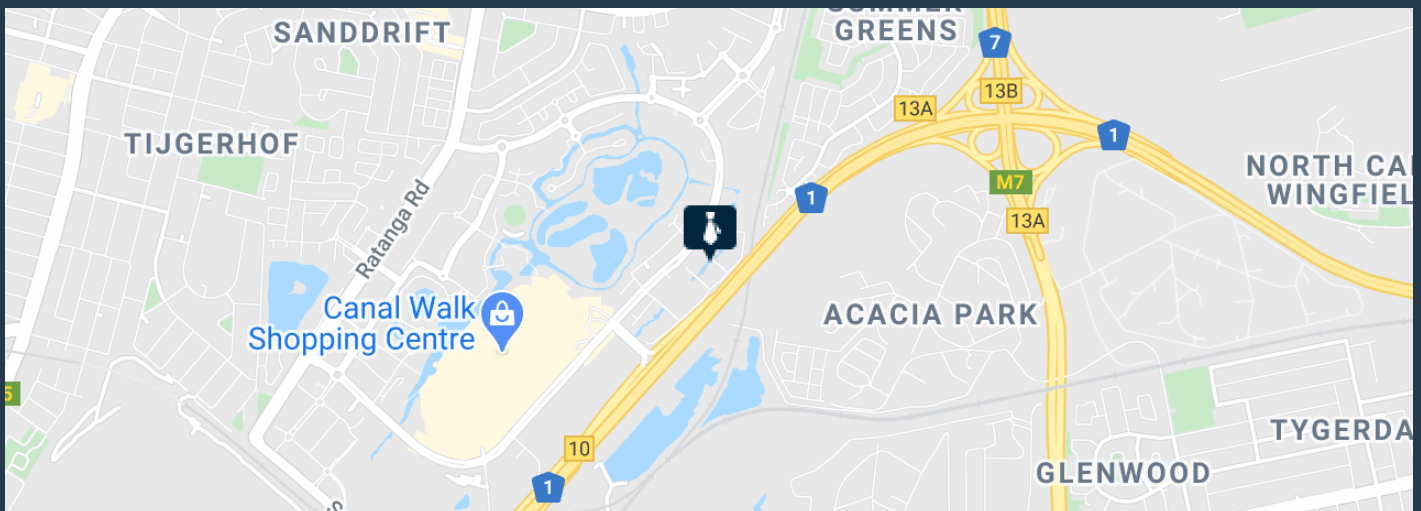
**R47,160** per month excl. VAT

**R180** per m<sup>2</sup>



[www.spire.co.za](http://www.spire.co.za)

## 262 M<sup>2</sup> OFFICE SPACE TO RENT CENTURY CITY | CENTENNIAL PLACE



### PROPERTY DETAILS

▲ Security	Yes	▲ Floor Size	262m <sup>2</sup>
▲ Air Conditioning	Yes	▲ Land Size	262
		▲ Zoning	Commercial

**WEB REF: CL1592**

**Kevin Hellyer | 061 484 5578 | [kevinh@spire.co.za](mailto:kevinh@spire.co.za)**

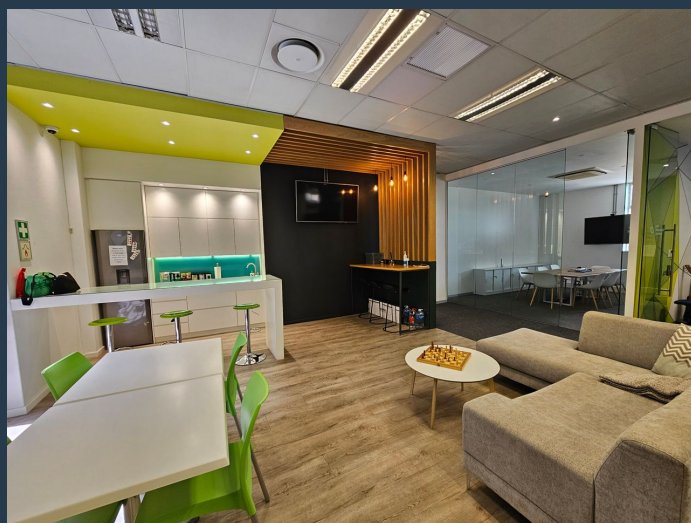
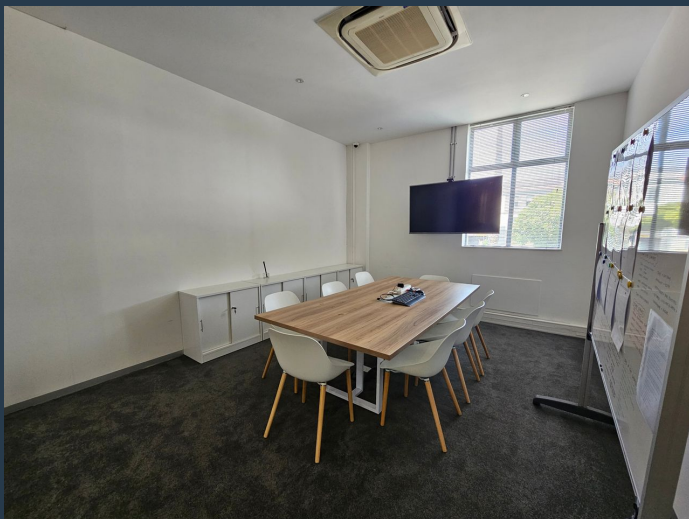
PROPERTY | WITH PURPOSE

**R47,160** per month excl. VAT

R180 per m<sup>2</sup>



[www.spire.co.za](http://www.spire.co.za)



## CONTACT US



**Kevin Hellyer**

Candidate Property Practitioner

☎ (021) 6854020

📱 061 484 5578

✉ [kevinh@spire.co.za](mailto:kevinh@spire.co.za)

WEB REF: CL1592

Kevin Hellyer | 061 484 5578 | [kevinh@spire.co.za](mailto:kevinh@spire.co.za)