

PROPERTY | WITH PURPOSE

**R319,235** per month excl. VAT

**R245** per m<sup>2</sup>

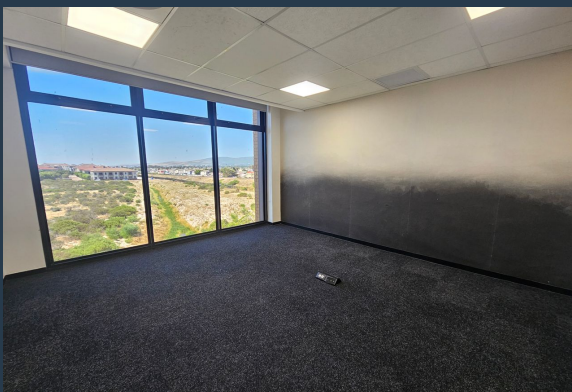


[www.spire.co.za](http://www.spire.co.za)

**TO LET**



1,303 m<sup>2</sup> Office to Rent Century City. Located on the second floor of No. 1 Waterhouse Place, this 1,303 m<sup>2</sup> office space offers a sophisticated and modern work environment designed to meet diverse business needs. The space is fully fitted out, featuring a welcoming reception area with seating, a mix of private offices and meeting rooms, and a spacious kitchen and staff pause area. The design boasts large, full-length windows, which flood the space with natural light, creating an inviting atmosphere. The exposed ceilings, paired with high-end lighting and finishes, lend a contemporary and polished aesthetic. Tenants also benefit from access to high-speed internet, 24-hour security, and ample covered parking for staff and visitors, ensuring a...



**WEB REF: CL1398**

**Kevin Hellyer | 061 484 5578 | [kevinh@spire.co.za](mailto:kevinh@spire.co.za)**

PROPERTY | WITH PURPOSE

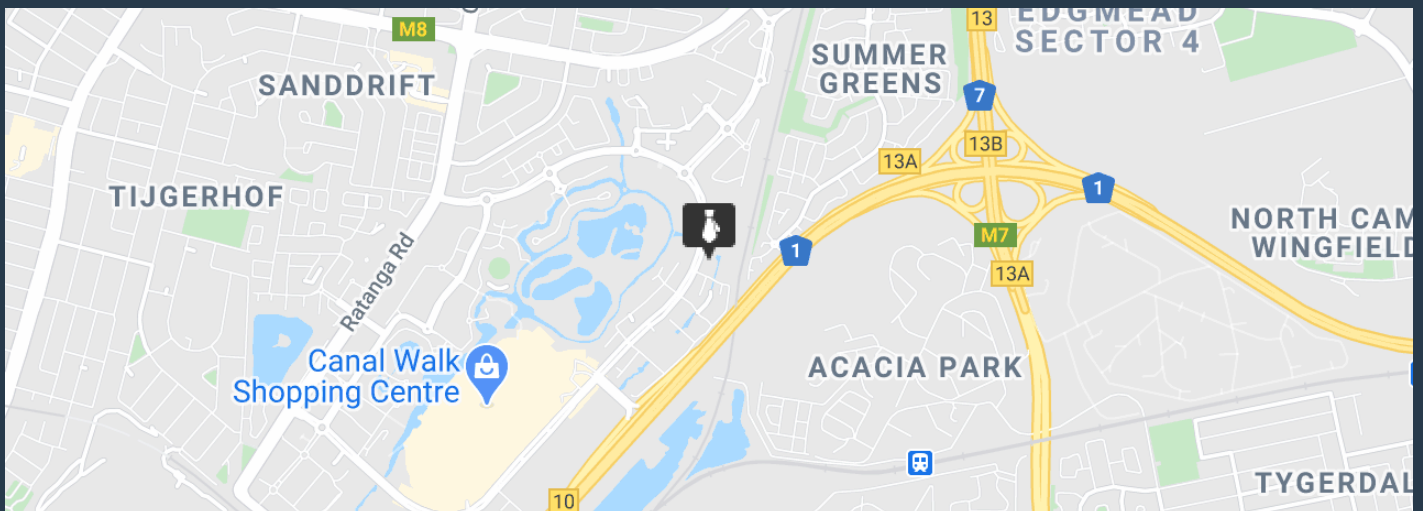
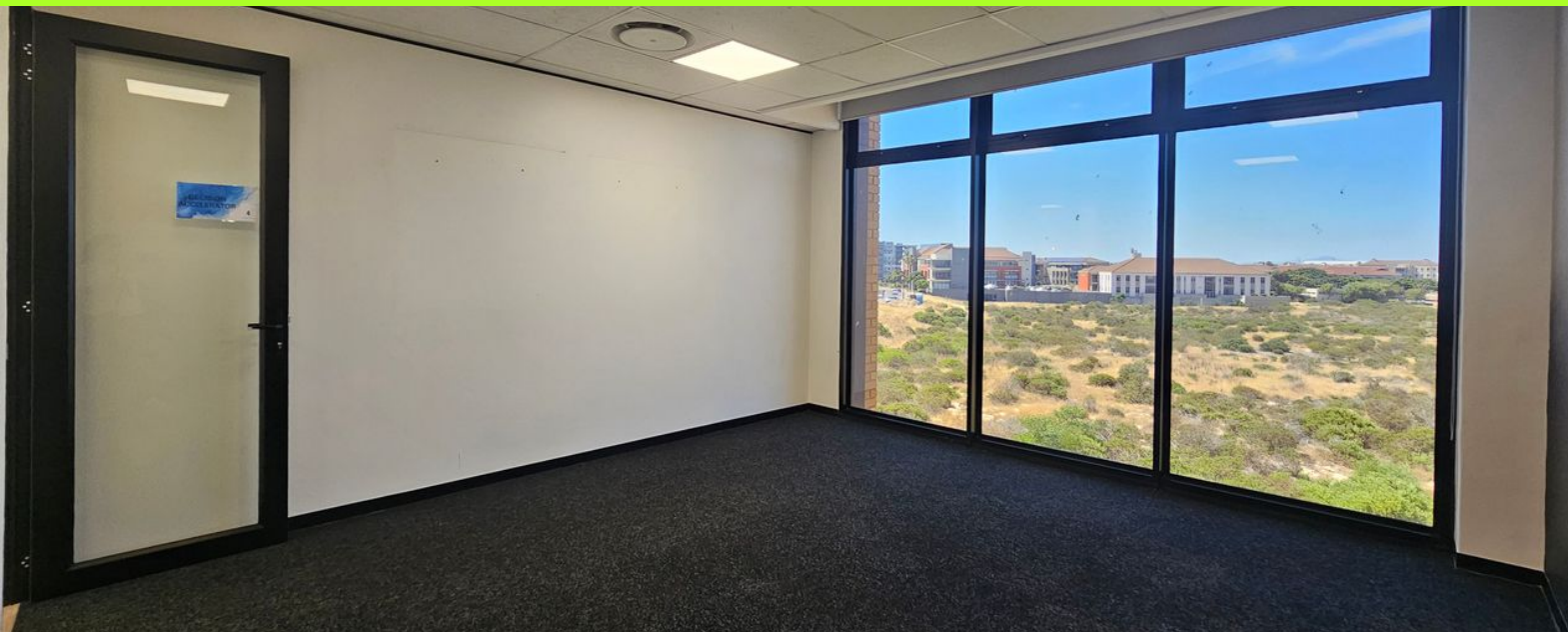
**R319,235** per month excl. VAT

R245 per m<sup>2</sup>



[www.spire.co.za](http://www.spire.co.za)

## OFFICE SPACE TO RENT CENTURY CITY I NO 1 WATERHOUSE PLACE



### PROPERTY DETAILS

▲ Security	Yes	▲ Basement Parking	30.0	▲ Floor Size	1303m <sup>2</sup>
▲ Air Conditioning	Yes			▲ Land Size	1303
				▲ Zoning	Commercial

WEB REF: CL1398

Kevin Hellyer | 061 484 5578 | [kevinh@spire.co.za](mailto:kevinh@spire.co.za)



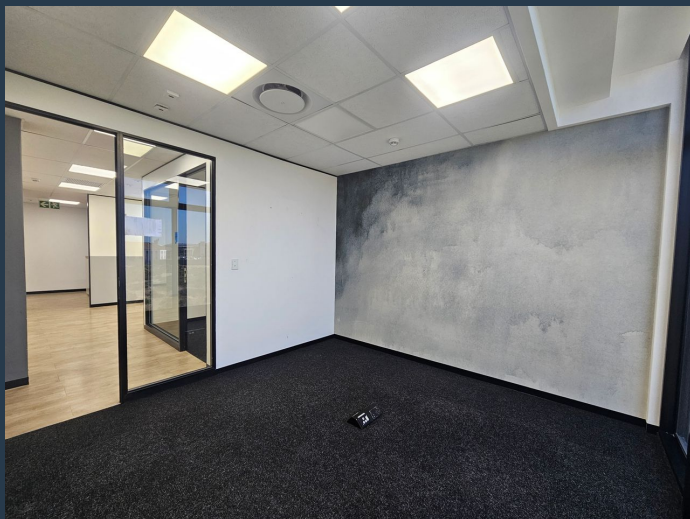
PROPERTY | WITH PURPOSE

**R319,235** per month excl. VAT

R245 per m<sup>2</sup>



[www.spire.co.za](http://www.spire.co.za)



## CONTACT US



**Kevin Hellyer**

Candidate Property Practitioner

☎ (021) 6854020

📱 061 484 5578

✉ [kevinh@spire.co.za](mailto:kevinh@spire.co.za)

WEB REF: CL1398

Kevin Hellyer | 061 484 5578 | [kevinh@spire.co.za](mailto:kevinh@spire.co.za)