

PROPERTY | WITH PURPOSE

R64,260 per month excl. VAT

R180 per m²

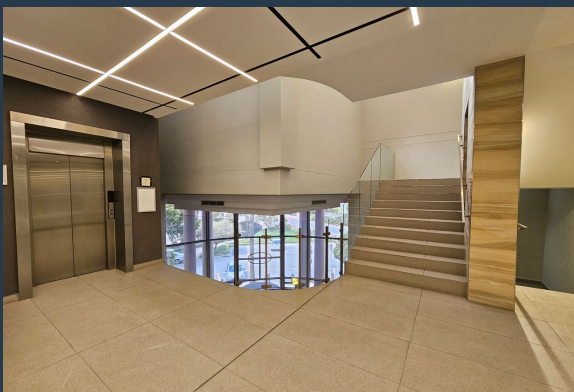


www.spire.co.za

TO LET



357 m² Office Space to Rent in Century City. Very neat Commercial Property to rent in a secure business park just off from Century Boulevard. Centennial Place comprises two stand alone buildings. The space is on the 1st floor, is fully fitted out with little work needed from the new tenant. The space includes a reception area with space for seating, a full kitchen and open plan spaces with a board room. Tenants have access to shared bathrooms on each floor. Centennial Place has full access control with 24 hour security. Tenants can lease open as well as basement parking bays at the building. Centennial Place is strategically positioned in Century City, offering seamless access to the N1 highway and major transport routes. The area is...



WEB REF: CL1224

Kevin Hellyer | 061 484 5578 | kevinh@spire.co.za

PROPERTY | WITH PURPOSE

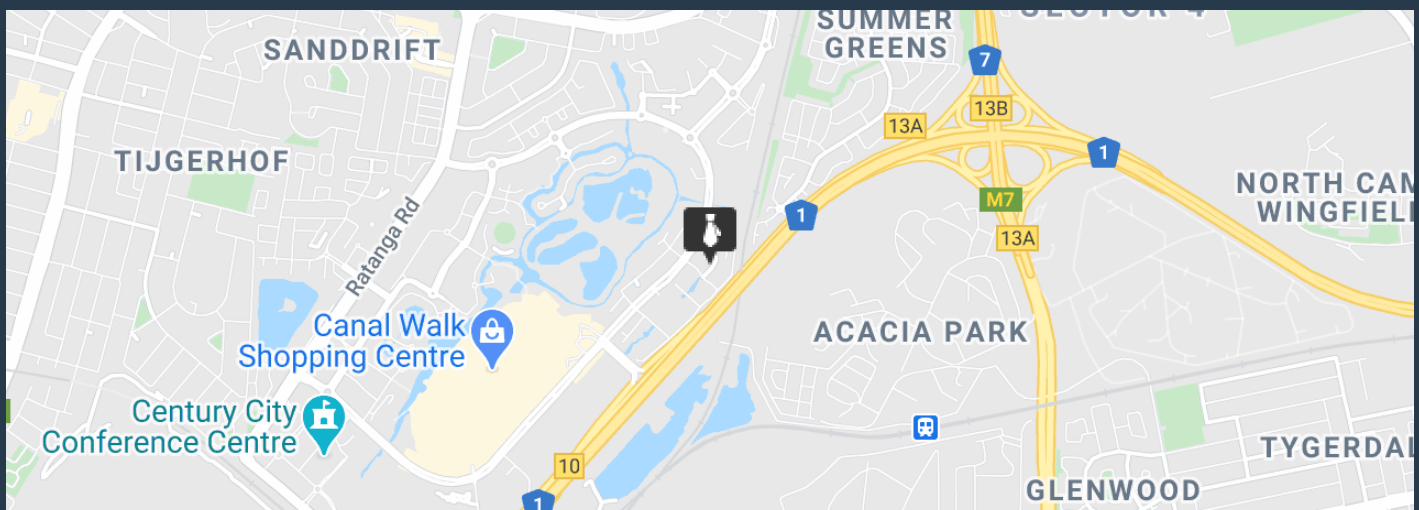
R64,260 per month excl. VAT

R180 per m²



www.spire.co.za

357 M² OFFICE SPACE TO RENT CENTURY CITY | CENTENNIAL PLACE



PROPERTY DETAILS

▲ Security	Yes	▲ Basement Parking	1000.0	▲ Floor Size	357m ²
▲ Air Conditioning	Yes			▲ Land Size	357
				▲ Zoning	Commercial

WEB REF: CL1224

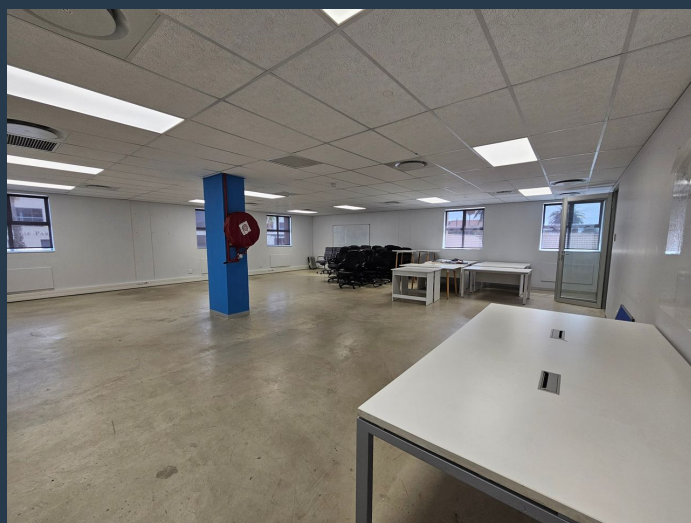
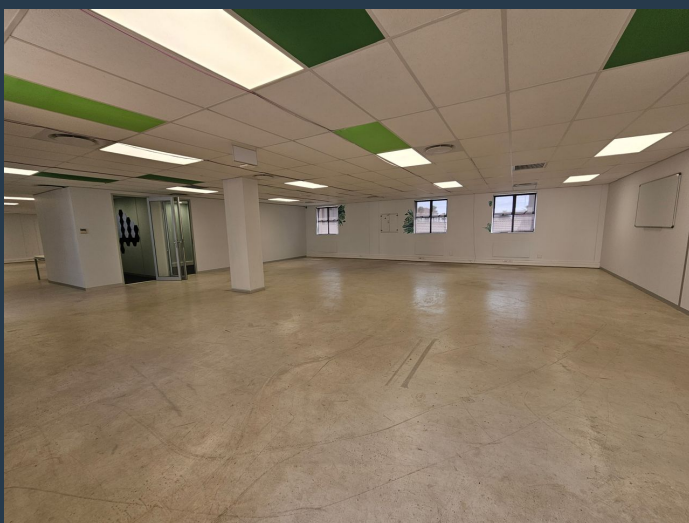
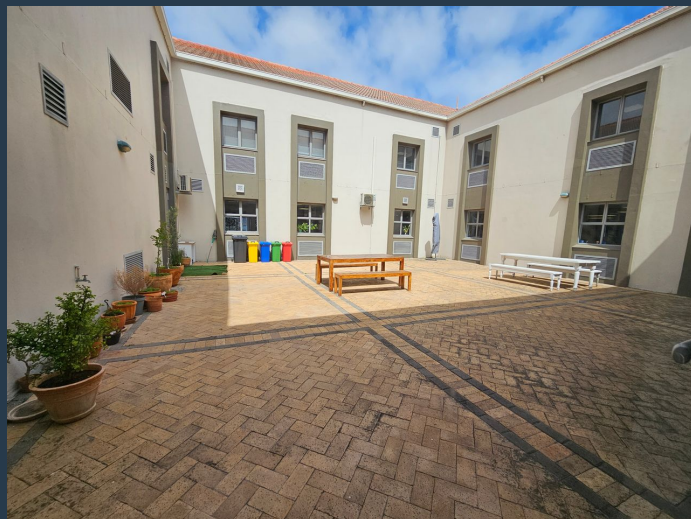
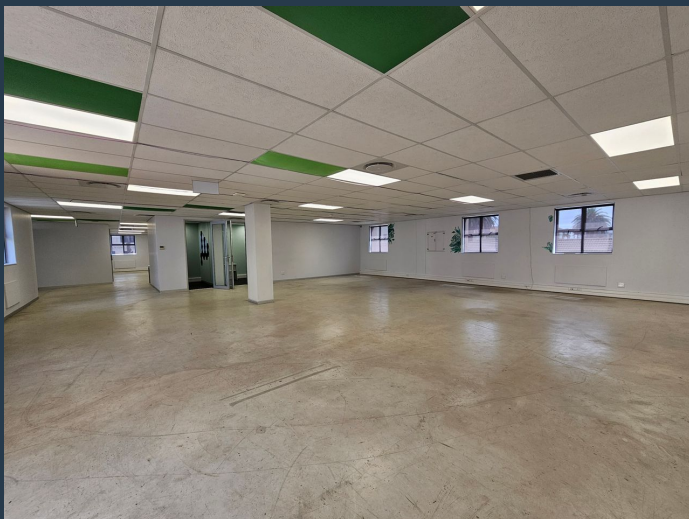
Kevin Hellyer | 061 484 5578 | kevinh@spire.co.za

PROPERTY | WITH PURPOSE

R64,260 per month excl. VAT
R180 per m²



www.spire.co.za



CONTACT US



Kevin Hellyer

Candidate Property Practitioner

☎ (021) 6854020

📱 061 484 5578

✉ kevinh@spire.co.za

WEB REF: CL1224

Kevin Hellyer | 061 484 5578 | kevinh@spire.co.za