

PROPERTY | WITH PURPOSE

R46,689 per month excl. VAT

R79 per m²



www.spire.co.za

TO LET



KYALAMI BUSINESS PARKL

76 Kyalami Boulevard

First floor offices in a newly upgraded building, this office is in the much sort after very secure Kyalami Business park. Large modern entrance and reception areas lead to offices that have loads of natural light and beautiful views. Kyalami has great access roads from the N1, Krugersdorp highway, Fourways and Woodmead. Work and Live in close proximity this office park is perfect. SPIRE Properties have a team of property professionals who have been helping businesses just like yours to find their perfect Commercial retail or industrial space. Our team of property professionals are ready to find your perfect space. We have longstanding relationships with the top property funds and property management companies in the...



WEB REF: CL3465

Rainer Schulz | +27837773745 | rainers@spire.co.za

PROPERTY | WITH PURPOSE

R46,689 per month excl. VAT

R79 per m²



www.spire.co.za

TO LET R 79/M2 KYALAMI BUSINESS PARK



PROPERTY DETAILS

▲ Open Parking	2.0	▲ Floor Size	591m ²
▲ Covered Parking	2.0	▲ Zoning	Commercial
▲ Basement Parking	2.0		

WEB REF: CL3465

Rainer Schulz | +27837773745 | rainers@spire.co.za

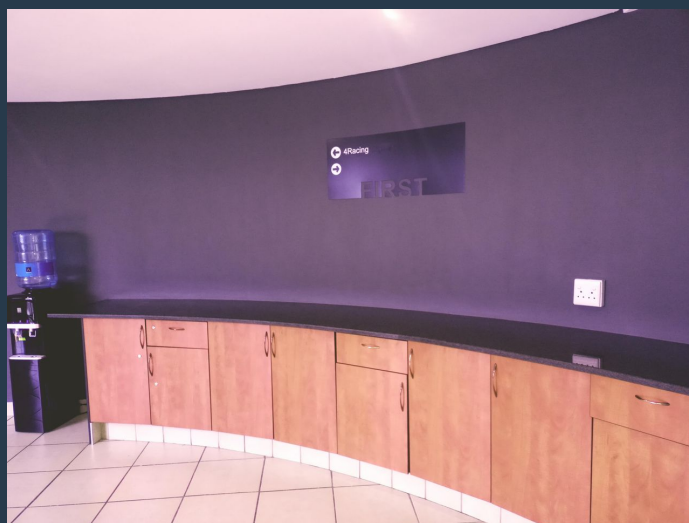
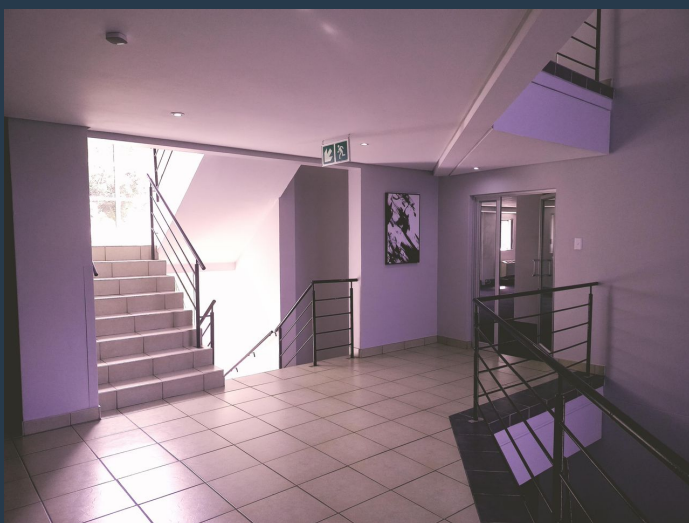
PROPERTY | WITH PURPOSE

R46,689 per month excl. VAT

R79 per m²



www.spire.co.za



CONTACT US



Rainer Schulz

Agent

☎ (011) 2685871

📱 +27837773745

✉ rainers@spire.co.za



Nadeema Chothia

Agent

☎ (011) 2685871

📱 083 305 5354

✉ nadeemac@spire.co.za

WEB REF: CL3465

Rainer Schulz | +27837773745 | rainers@spire.co.za