

PROPERTY | WITH PURPOSE

**R18,744** per month excl. VAT

R142 per m<sup>2</sup>

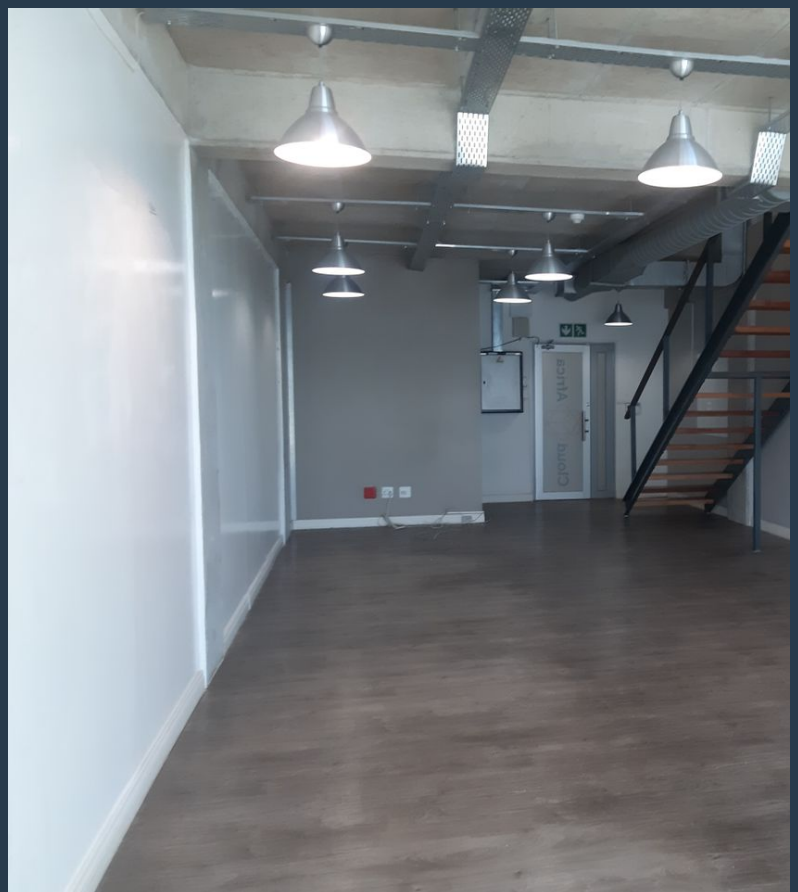


[www.spire.co.za](http://www.spire.co.za)

**TO LET**



132 Office space to rent in Rosebank. Office is fully fitted and is ready to occupy. It is an industrial modern styled loft office with stunning view of Rosebank. There is a small balcony and communal garden. There is ample basement parking and easy access to The Zone retail shops. Rosebank is an ideally situated area hence infrastructure is world class, as it's within close proximity to other areas such as Sandton so it benefits largely from the world-class roadways in and around the area as well. Some prominent schools in the area include Rosebank Primary School, St Teresa's School, Kingsmead College, Vuleka Primary School and Saxonwold Primary School. Healthcare facilities in the area include Health Cubes Medical Centre, Dr. Jean-Paul...



WEB REF: SCL285

Nadeema Chothia | 083 305 5354 | [nadeemac@spire.co.za](mailto:nadeemac@spire.co.za)

PROPERTY | WITH PURPOSE

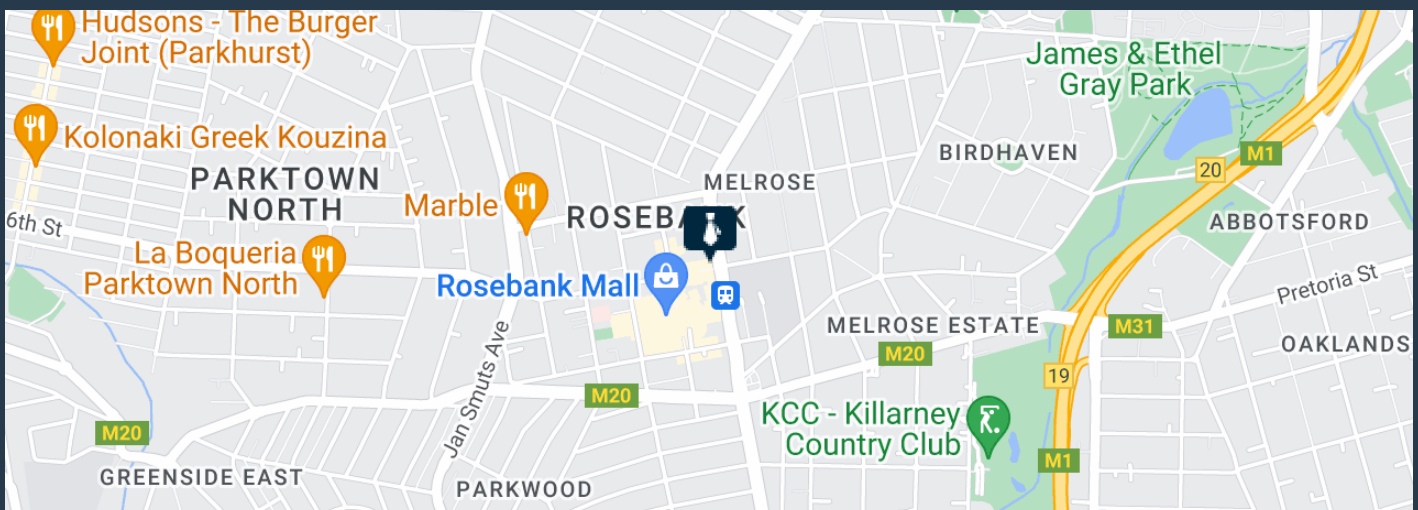
**R18,744** per month excl. VAT

R142 per m<sup>2</sup>



[www.spire.co.za](http://www.spire.co.za)

## OFFICE SPACE TO RENT IN ROSEBANK



### PROPERTY DETAILS

▲ Basement Parking	5.0	▲ Floor Size	132m <sup>2</sup>
		▲ Zoning	Commercial

WEB REF: SCL285

Nadeema Chothia | 083 305 5354 | [nadeemac@spire.co.za](mailto:nadeemac@spire.co.za)



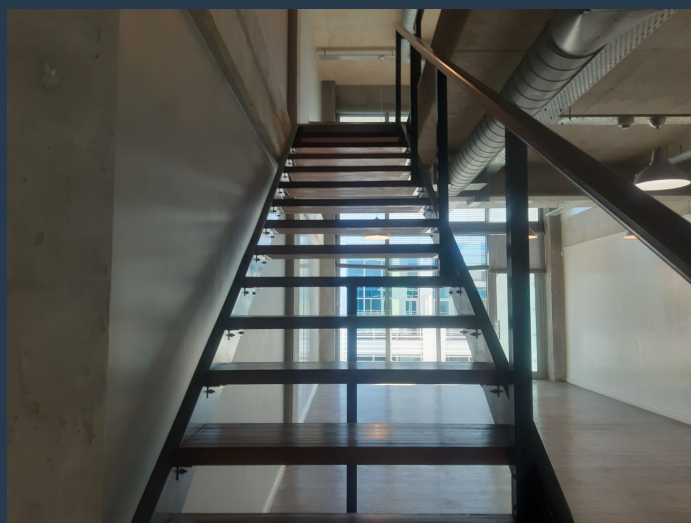
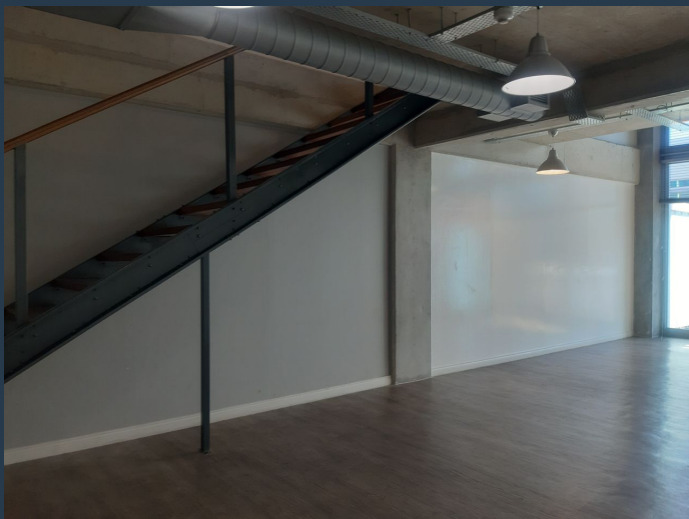
PROPERTY | WITH PURPOSE

**R18,744** per month excl. VAT

R142 per m<sup>2</sup>



[www.spire.co.za](http://www.spire.co.za)



## CONTACT US



**Nadeema Chothia**

Agent

☎ (011) 2685871

📱 083 305 5354

✉ [nadeemac@spire.co.za](mailto:nadeemac@spire.co.za)

WEB REF: SCL285

Nadeema Chothia | 083 305 5354 | [nadeemac@spire.co.za](mailto:nadeemac@spire.co.za)