

PROPERTY | WITH PURPOSE

**R31,600** per month excl. VAT

R100 per m<sup>2</sup>



[www.spire.co.za](http://www.spire.co.za)

**TO LET**

## SUNNYSIDE OFFICE PARK

32 Princess of Wales Terrace Parktown

316sqm To let in the Sunnyside Office Park based in Parktown offers office spaces for either new businesses or business that has been around. This office park has an attractive setting with various refreshing water fountains, beautiful well-maintained gardens, and iconic buildings, with exquisite interior. It is located nearby the Killarney Mall and features a secure boomed access point with security guards monitoring the ins and outs of visitors, providing easy access to Carse O'Gowrie Rd and Princess of Wales Terrace. The park hosts numerous large-scale companies in the various blocks, to create an appealing professional environment. Furthermore, the park offers stunning gardens, and large windows which are well manicured allowing the...



WEB REF: CL3826

Kate Shimwell | 082 493 0273 | [kates@spire.co.za](mailto:kates@spire.co.za)

PROPERTY | WITH PURPOSE

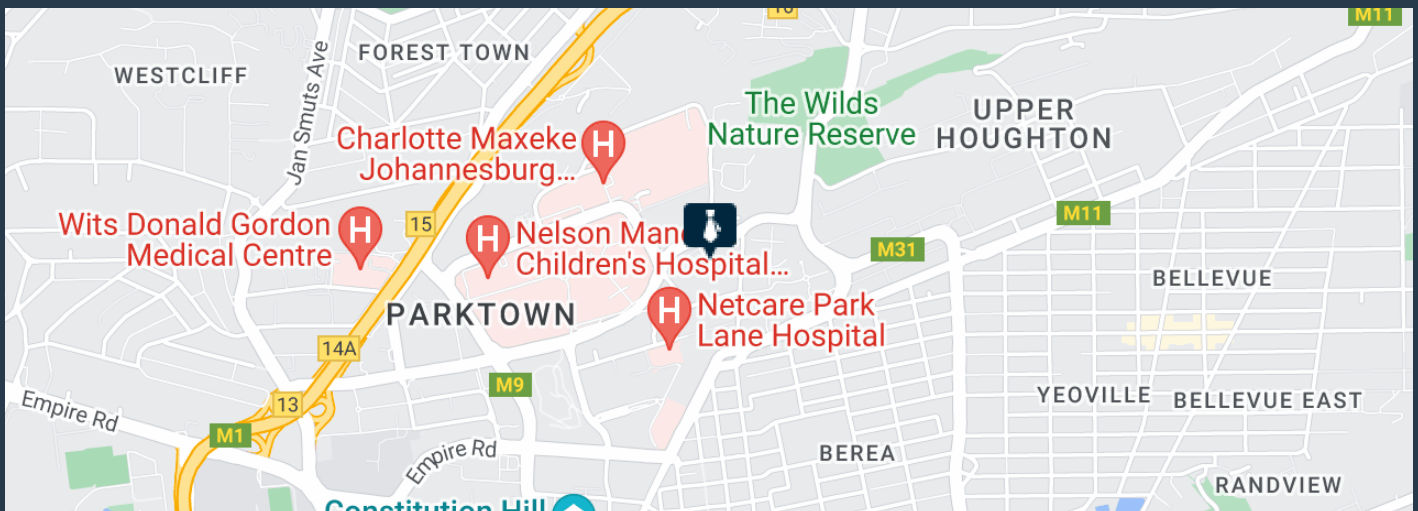
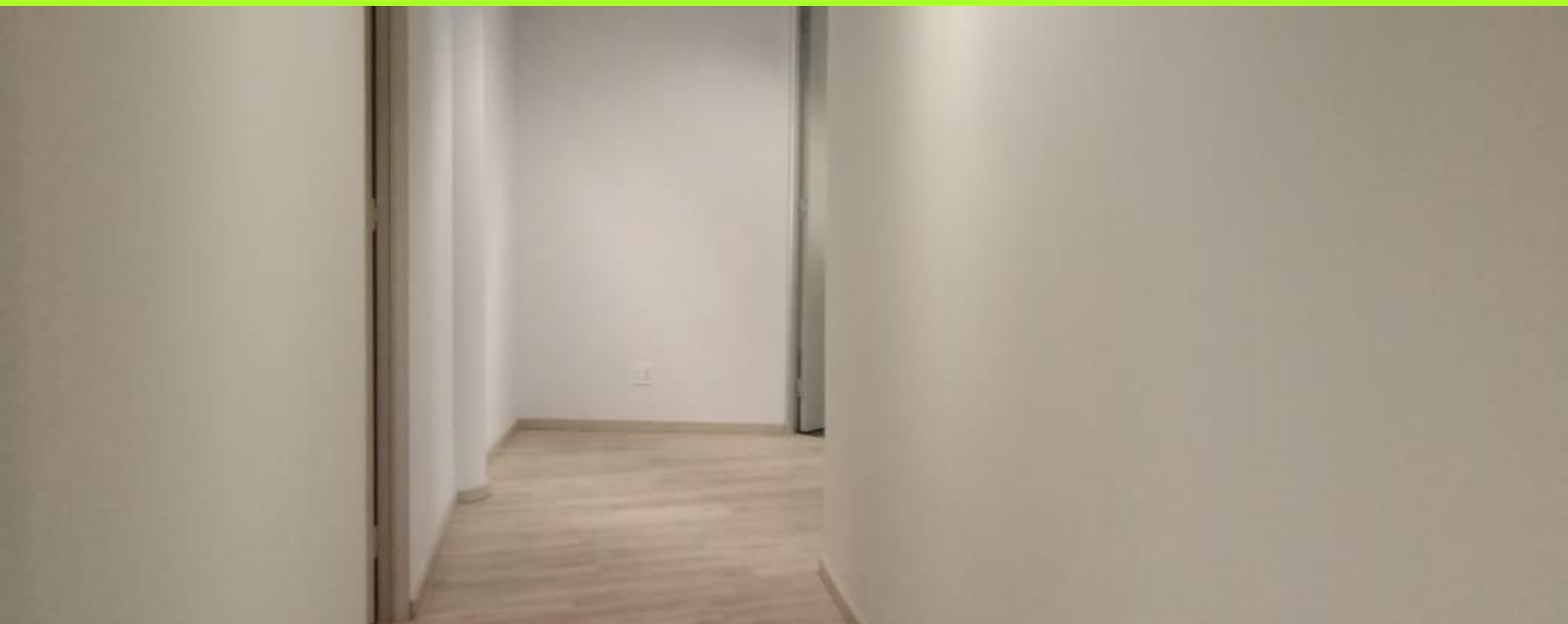
**R31,600** per month excl. VAT

R100 per m<sup>2</sup>



[www.spire.co.za](http://www.spire.co.za)

## 316SQM TO LET IN THE SUNNYSIDE OFFICE PARK



### PROPERTY DETAILS

▲ Security	Yes	▲ Basement Parking	750.0	▲ Floor Size	316m <sup>2</sup>
▲ Air Conditioning	Yes			▲ Zoning	Commercial

WEB REF: CL3826

Kate Shimwell | 082 493 0273 | [kates@spire.co.za](mailto:kates@spire.co.za)

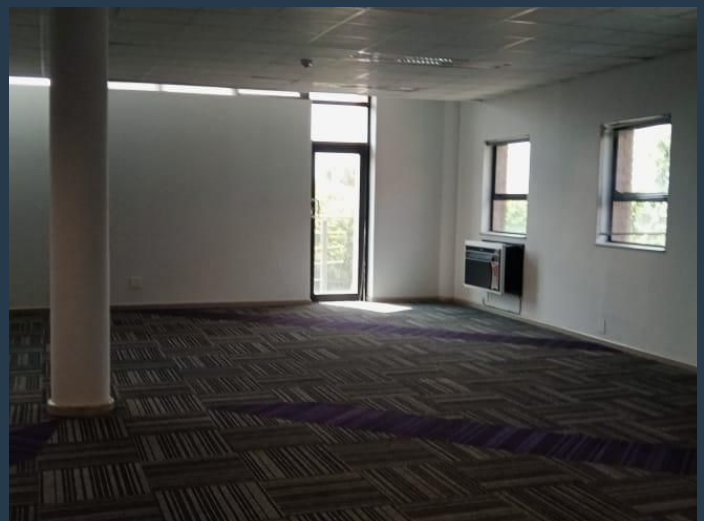


PROPERTY | WITH PURPOSE

**R31,600** per month excl. VAT  
R100 per m<sup>2</sup>



[www.spire.co.za](http://www.spire.co.za)



## CONTACT US



**Kate Shimwell**  
Agent

☎ (011) 2685871  
📱 082 493 0273  
✉ [kates@spire.co.za](mailto:kates@spire.co.za)



**Kate Shimwell**  
Agent

☎ (011) 2685871  
📱 082 493 0273  
✉ [kates@spire.co.za](mailto:kates@spire.co.za)

WEB REF: CL3826

Kate Shimwell | 082 493 0273 | [kates@spire.co.za](mailto:kates@spire.co.za)